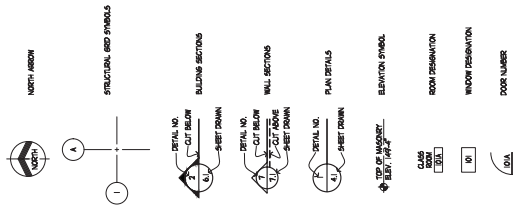


DEMOLITION PROJECT FOR:

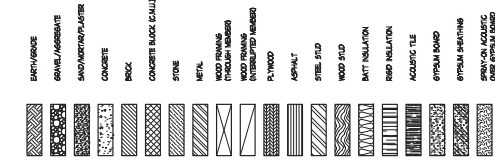
# CASPER COLLEGE WHEELER TERRACE #CC613-26

CASPER, WYOMING

**SYMBOLS**



**MATERIAL INDICATIONS**



**BUILDING CODE DATA**

GENERAL INFORMATION  
 OWNER: CASPER COLLEGE  
 PROJECT ADDRESS: 4TH COLLEGE DR.  
 PROJECT ADDRESS: CASPER, WYOMING 82401

**PROJECT TEAM**

OWNER: CASPER COLLEGE  
 ARCHITECT: ATTN: JEFF SPANGLER, P.E.  
 STRUCTURAL ENGINEER: LOWER AND COMPANY, INC.  
 CIVIL ENGINEER: MONTGOMERY/LENNHART CORPORATION  
 ELECTRICAL ENGINEER: WEST PLAINS ENGINEERING  
 LANDSCAPE ARCHITECT: CIVIL ENGINEERING PROFESSIONALS

**DRAWING INDEX**

0.0 COVER SHEET, GENERAL INFORMATION AND INDEX  
 CIVIL  
 1.00 CIVIL SITE SURVEY  
 1.01 CIVIL SITE DEMO  
 1.02 CIVIL SITE RELOCATION  
 LANDSCAPE  
 2.00 RELOCATION PLANNING/SCAPE PLAN  
 ARCHITECTURAL  
 3.00 BUILDING DEMOLITION PLAN  
 ELECTRICAL  
 4.00 ELECTRICAL SITE PLAN

**REFERENCE DRAWINGS**

1. WEST PLAINS ENGINEERING PROFESSIONALS  
 2. WEST PLAINS ENGINEERING PROFESSIONALS  
 3. WEST PLAINS ENGINEERING PROFESSIONALS  
 4. WEST PLAINS ENGINEERING PROFESSIONALS  
 5. WEST PLAINS ENGINEERING PROFESSIONALS  
 6. WEST PLAINS ENGINEERING PROFESSIONALS  
 7. WEST PLAINS ENGINEERING PROFESSIONALS  
 8. WEST PLAINS ENGINEERING PROFESSIONALS  
 9. WEST PLAINS ENGINEERING PROFESSIONALS  
 10. WEST PLAINS ENGINEERING PROFESSIONALS  
 11. WEST PLAINS ENGINEERING PROFESSIONALS  
 12. WEST PLAINS ENGINEERING PROFESSIONALS  
 13. WEST PLAINS ENGINEERING PROFESSIONALS  
 14. WEST PLAINS ENGINEERING PROFESSIONALS  
 15. WEST PLAINS ENGINEERING PROFESSIONALS  
 16. WEST PLAINS ENGINEERING PROFESSIONALS  
 17. WEST PLAINS ENGINEERING PROFESSIONALS  
 18. WEST PLAINS ENGINEERING PROFESSIONALS  
 19. WEST PLAINS ENGINEERING PROFESSIONALS  
 20. WEST PLAINS ENGINEERING PROFESSIONALS  
 21. WEST PLAINS ENGINEERING PROFESSIONALS  
 22. WEST PLAINS ENGINEERING PROFESSIONALS  
 23. WEST PLAINS ENGINEERING PROFESSIONALS  
 24. WEST PLAINS ENGINEERING PROFESSIONALS  
 25. WEST PLAINS ENGINEERING PROFESSIONALS  
 26. WEST PLAINS ENGINEERING PROFESSIONALS  
 27. WEST PLAINS ENGINEERING PROFESSIONALS  
 28. WEST PLAINS ENGINEERING PROFESSIONALS  
 29. WEST PLAINS ENGINEERING PROFESSIONALS  
 30. WEST PLAINS ENGINEERING PROFESSIONALS  
 31. WEST PLAINS ENGINEERING PROFESSIONALS  
 32. WEST PLAINS ENGINEERING PROFESSIONALS  
 33. WEST PLAINS ENGINEERING PROFESSIONALS  
 34. WEST PLAINS ENGINEERING PROFESSIONALS  
 35. WEST PLAINS ENGINEERING PROFESSIONALS  
 36. WEST PLAINS ENGINEERING PROFESSIONALS  
 37. WEST PLAINS ENGINEERING PROFESSIONALS  
 38. WEST PLAINS ENGINEERING PROFESSIONALS  
 39. WEST PLAINS ENGINEERING PROFESSIONALS  
 40. WEST PLAINS ENGINEERING PROFESSIONALS  
 41. WEST PLAINS ENGINEERING PROFESSIONALS  
 42. WEST PLAINS ENGINEERING PROFESSIONALS  
 43. WEST PLAINS ENGINEERING PROFESSIONALS  
 44. WEST PLAINS ENGINEERING PROFESSIONALS  
 45. WEST PLAINS ENGINEERING PROFESSIONALS  
 46. WEST PLAINS ENGINEERING PROFESSIONALS  
 47. WEST PLAINS ENGINEERING PROFESSIONALS  
 48. WEST PLAINS ENGINEERING PROFESSIONALS  
 49. WEST PLAINS ENGINEERING PROFESSIONALS  
 50. WEST PLAINS ENGINEERING PROFESSIONALS  
 51. WEST PLAINS ENGINEERING PROFESSIONALS  
 52. WEST PLAINS ENGINEERING PROFESSIONALS  
 53. WEST PLAINS ENGINEERING PROFESSIONALS  
 54. WEST PLAINS ENGINEERING PROFESSIONALS  
 55. WEST PLAINS ENGINEERING PROFESSIONALS  
 56. WEST PLAINS ENGINEERING PROFESSIONALS  
 57. WEST PLAINS ENGINEERING PROFESSIONALS  
 58. WEST PLAINS ENGINEERING PROFESSIONALS  
 59. WEST PLAINS ENGINEERING PROFESSIONALS  
 60. WEST PLAINS ENGINEERING PROFESSIONALS  
 61. WEST PLAINS ENGINEERING PROFESSIONALS  
 62. WEST PLAINS ENGINEERING PROFESSIONALS  
 63. WEST PLAINS ENGINEERING PROFESSIONALS  
 64. WEST PLAINS ENGINEERING PROFESSIONALS  
 65. WEST PLAINS ENGINEERING PROFESSIONALS  
 66. WEST PLAINS ENGINEERING PROFESSIONALS  
 67. WEST PLAINS ENGINEERING PROFESSIONALS  
 68. WEST PLAINS ENGINEERING PROFESSIONALS  
 69. WEST PLAINS ENGINEERING PROFESSIONALS  
 70. WEST PLAINS ENGINEERING PROFESSIONALS  
 71. WEST PLAINS ENGINEERING PROFESSIONALS  
 72. WEST PLAINS ENGINEERING PROFESSIONALS  
 73. WEST PLAINS ENGINEERING PROFESSIONALS  
 74. WEST PLAINS ENGINEERING PROFESSIONALS  
 75. WEST PLAINS ENGINEERING PROFESSIONALS  
 76. WEST PLAINS ENGINEERING PROFESSIONALS  
 77. WEST PLAINS ENGINEERING PROFESSIONALS  
 78. WEST PLAINS ENGINEERING PROFESSIONALS  
 79. WEST PLAINS ENGINEERING PROFESSIONALS  
 80. WEST PLAINS ENGINEERING PROFESSIONALS  
 81. WEST PLAINS ENGINEERING PROFESSIONALS  
 82. WEST PLAINS ENGINEERING PROFESSIONALS  
 83. WEST PLAINS ENGINEERING PROFESSIONALS  
 84. WEST PLAINS ENGINEERING PROFESSIONALS  
 85. WEST PLAINS ENGINEERING PROFESSIONALS  
 86. WEST PLAINS ENGINEERING PROFESSIONALS  
 87. WEST PLAINS ENGINEERING PROFESSIONALS  
 88. WEST PLAINS ENGINEERING PROFESSIONALS  
 89. WEST PLAINS ENGINEERING PROFESSIONALS  
 90. WEST PLAINS ENGINEERING PROFESSIONALS  
 91. WEST PLAINS ENGINEERING PROFESSIONALS  
 92. WEST PLAINS ENGINEERING PROFESSIONALS  
 93. WEST PLAINS ENGINEERING PROFESSIONALS  
 94. WEST PLAINS ENGINEERING PROFESSIONALS  
 95. WEST PLAINS ENGINEERING PROFESSIONALS  
 96. WEST PLAINS ENGINEERING PROFESSIONALS  
 97. WEST PLAINS ENGINEERING PROFESSIONALS  
 98. WEST PLAINS ENGINEERING PROFESSIONALS  
 99. WEST PLAINS ENGINEERING PROFESSIONALS  
 100. WEST PLAINS ENGINEERING PROFESSIONALS

JOB #	SET #
25110	



**AMUNDSEN ASSOCIATES**  
 ARCHITECTURE • PLANNING • INTERIOR DESIGN  
 212 E. Second Street  
 Casper, Wyoming 82601  
 307.234.9999  
 office@amundsenassociates.com



DEMOLITION PROJECT FOR:  
**CASPER COLLEGE**  
**WHEELER TERRACE**  
 CASPER, WYOMING

DATE: MARCH 31, 2008  
 USER NUMBER: 2510  
 DRAWN BY: JLS  
 CHECKED BY: JLS  
 CIVIL SITE SURVEY

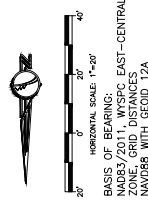
**1.00**

**OWNERSHIP OF DOCUMENTS**  
 This document and the information contained herein are the property of AMUNDSEN ASSOCIATES. It is to be used only for the project and site identified herein. It is not to be used, in whole or in part, for any other project or site without the written consent of AMUNDSEN ASSOCIATES.

**LEGEND**

- RECOVERED BRASS CAP
  - RECOVERED ALUM. CAP
  - RECOVERED REBAR
  - RECOVERED IRON PIPE
  - RECOVERED CORNER
  - EX SON
  - EX BRASS
  - EX CALVERT
  - EX TY. PEGESTAL
  - EX POWER TRANSFORMER
  - EX LIGHT POLE
  - EX GUY ANCHOR
  - EX ELECTRIC METER
  - EX ELECTRIC WALL
  - EX SANITARY MANHOLE
  - EX STORM MANHOLE
  - EX TRAFFIC SIGNAL
  - EX TRAFFIC CONTROL BOX
  - EX TRAFFIC SIGNAL
  - EX WATER VALVE
  - EX FIRE HYDRANT
  - EX CURB STOP
  - EX SPRINKLER VALVE BOX
- 
- PROPERTY BOUNDARY
  - EX FENCE
  - EX ROAD
  - EX EDGE ASPHALT
  - EX EDGE CONCRETE
  - EX EDGE GRAVEL
  - EX EDGE CURB
  - EX CASABAT
  - EX CONTOUR MAJOR
  - EX CONTOUR MINOR
  - EX GASLINE
  - EX POWERLINE
  - EX STORM SEWER
  - EX SANITARY SEWER
  - EX TELEPHONE
  - EX WATERLINE
  - EX OVERHEAD POWER

**NOTES:**  
 1) ALL EXISTING UNDERGROUND UTILITIES MAY NOT BE SHOWN ON THIS PLAN. LOCATIONS OF SHOWN UTILITIES ARE APPROXIMATE AND NOT TO BE ACCURATELY DEPICT EXACT LOCATIONS. LOCATES SHALL BE CALLED IN PRIOR TO ANY CONSTRUCTION ACTIVITIES.

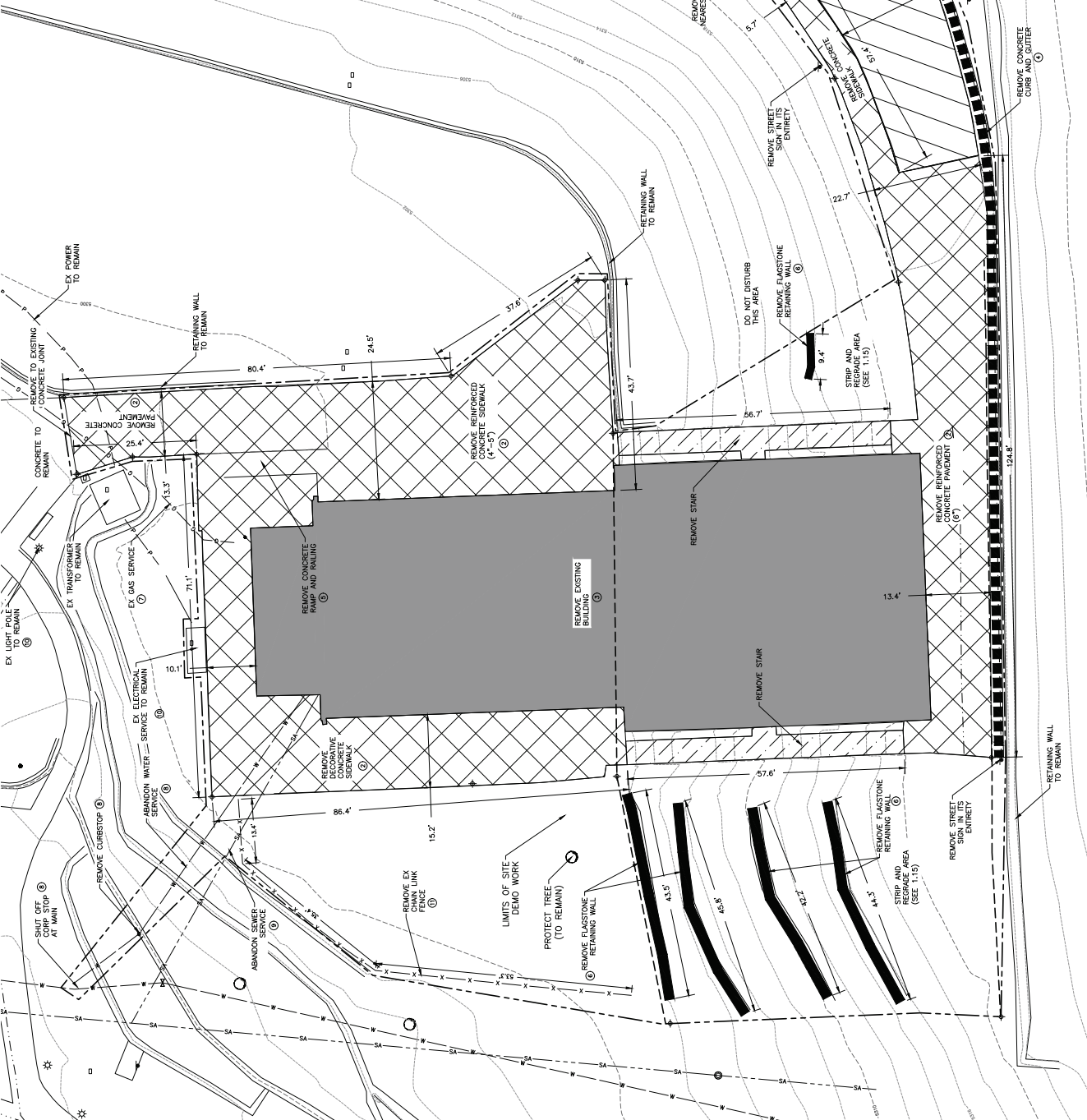
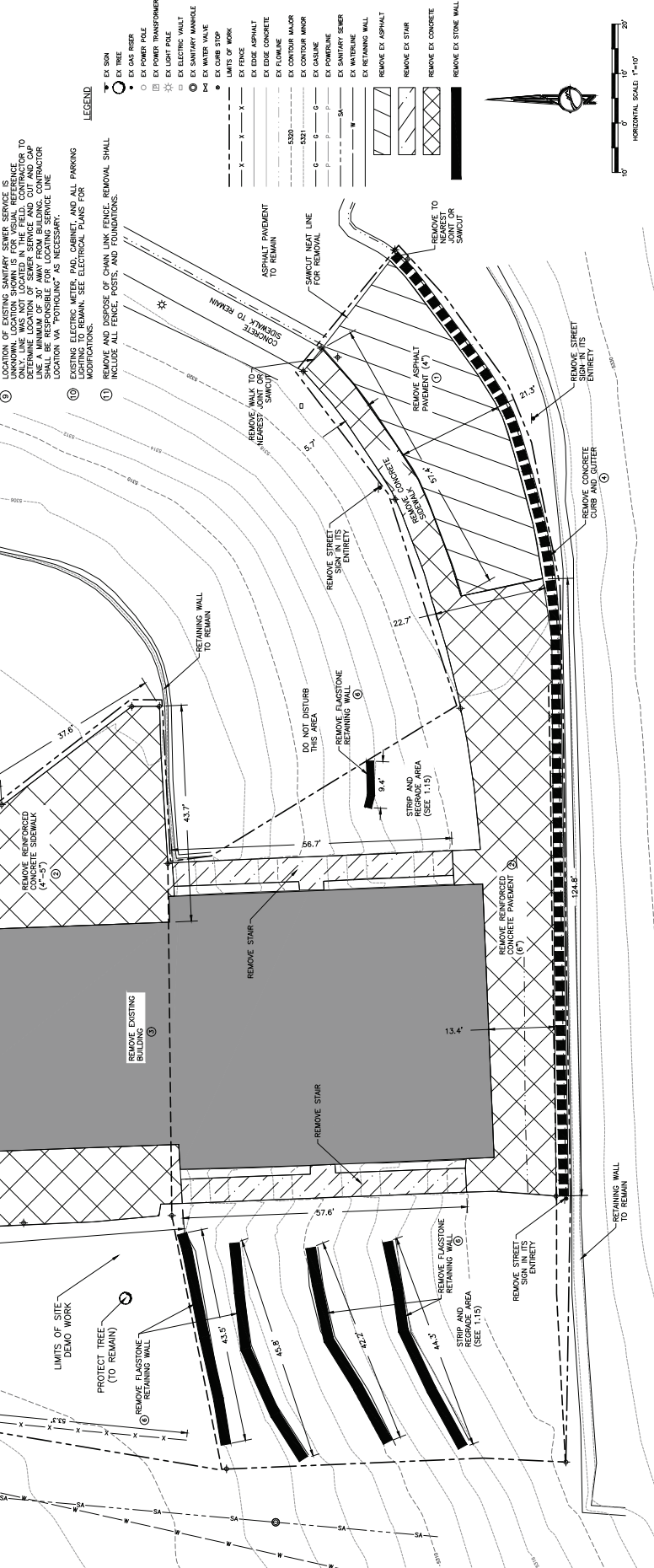




**OWNERSHIP OF DOCUMENTS**  
This set of drawings is the property of Amundsen Associates. It is to be used only for the project and site for which it was prepared. No part of this set of drawings is to be reproduced, stored in a retrieval system, or transmitted in any form or by any means, electronic, mechanical, photocopying, recording, or by any information system, without the prior written permission of Amundsen Associates.

- KEY NOTES:**
- REMOVE AND DISPOSE OF ASPHALT PAVEMENT AND BASE COURSE. FILL EXISTING GRADE WITH IMPROVEMENT MATERIAL TO WITHIN 4" OF EXISTING GRADE. PLACE TOPSOIL OVER IMPROVEMENT MATERIAL TO LANDSCAPE PLANS.
  - REMOVE AND DISPOSE OF REINFORCED AND UNREINFORCED CONCRETE. FILL EXISTING GRADE WITH IMPROVEMENT MATERIAL TO WITHIN 4" OF EXISTING GRADE. PLACE TOPSOIL OVER IMPROVEMENT MATERIAL TO LANDSCAPE PLANS.
  - REMOVE EXISTING BUILDINGS AND ASSOCIATED EXTERIOR STAIRS. REFER TO ARCHITECTURAL DEMO PLANS FOR MORE DETAILED INFORMATION.
  - REMOVE AND DISPOSE OF CONCRETE CURB AND GUTTER TO WITHIN 4" OF EXISTING GRADE. FILL SHALL BE MOISTURE CONDITIONED AND COMPACTED TO 90% OF MAXIMUM STANDARD PROCTOR DENSITY. PLACE TOPSOIL OVER DISTURBANCE AREA ACCORDING TO LANDSCAPE PLANS.
  - REMOVE AND DISPOSE OF THICKENED EDGE CONCRETE RAMP AND METAL RAILING TO SUBGRADE. REMOVAL SHALL INCLUDE ANY REINFORCEMENT.
  - REMOVE AND SALVAGE FLASTONE RETAINING WALLS IN THEIR ORIGINAL LOCATION. DELIVER FLASTONE TO A LOCATION ON CAMPUS TO BE DETERMINED BY THE OWNER.
  - REMOVE GAS LINE AS ENCOUNTERED DURING BUILDING DEMO. TO THIS PROJECT, COORDINATE WITH CASPER COLLEGE PROPERTY MANAGER AND SHUT OFF.
  - EXISTING WATER SERVICE SHALL BE CUT AND SHUT OFF AT CORPORATION STOP. CONTRACTOR TO LOCATE SERVICE TAP LOCATION AND SHUT OFF. CONTRACTOR TO COORDINATE WITH CASPER COLLEGE PROPERTY MANAGER INCLUDING ANY REQUIRED FEES. CITY PERSONNEL MUST BE NOTIFIED PRIOR TO SHUTTING OFF SERVICE. SERVICE LINE PIPE SHALL INCLUDE PULLING OUT CURBSTOP. SERVICE LINE PIPE SHALL BE REMOVED TO 30' AWAY FROM THE BUILDING. THE REMOVALER MAY BE APPROVED IN PLACE.
  - REMOVE EXISTING SERVICE LINES TO THE POINT OF REFERENCE ONLY. LINE WAS NOT LOCATED IN THE FIELD. CONTRACTOR TO VERIFY LOCATION OF SERVICE LINES. CONTRACTOR SHALL BE RESPONSIBLE FOR LOCATING SERVICE LINE LOCATION VIA "POURHOLE" AS NECESSARY. ALL PARKING LOCATIONS TO REMAIN. SEE ELECTRICAL PLANS FOR MODIFICATIONS.
  - REMOVE AND DISPOSE OF CHAIN LINK FENCE. REMOVAL SHALL INCLUDE ALL FENCE, POSTS, AND FOUNDATIONS.

- LEGEND**
- EX SON
  - EX TREE
  - EX GAS RISER
  - EX POWER POLE
  - EX POWER TRANSFORMER
  - EX LIGHT POLE
  - EX ELECTRIC VAULT
  - EX SANITARY MANHOLE
  - EX CURB STOP
  - EX CURB
  - EX FENCE
  - EX EDGE ASPHALT
  - EX EDGE CONCRETE
  - EX FLOWLINE
  - EX CONTOUR MAJOR
  - EX CONTOUR MINOR
  - EX GASLINE
  - EX FLOWLINE
  - EX SANITARY SEWER
  - EX RETAINING WALL
  - REMOVE EX ASPHALT
  - REMOVE EX STAR
  - REMOVE EX CONCRETE
  - REMOVE EX STONE WALL





**OWNERSHIP OF DOCUMENTS**  
This drawing is the property of AMUNDSEN ASSOCIATES. It is to be used for the project and site only. It is not to be used, in whole or in part, for any other project without the written consent of AMUNDSEN ASSOCIATES.

**GENERAL NOTES**  
1. ALL WORK SHALL BE IN ACCORDANCE WITH THE WYOMING DEPARTMENT OF ENVIRONMENT AND NATURAL RESOURCES (DENR) REGULATIONS AND THE WYOMING DEPARTMENT OF LAND AND NATURAL RESOURCES (DLNR) REGULATIONS.  
2. THE CONTRACTOR SHALL BE RESPONSIBLE FOR OBTAINING ALL NECESSARY PERMITS AND APPROVALS FROM THE DENR AND DLNR.  
3. THE CONTRACTOR SHALL BE RESPONSIBLE FOR OBTAINING ALL NECESSARY PERMITS AND APPROVALS FROM THE CITY OF CASPER.  
4. THE CONTRACTOR SHALL BE RESPONSIBLE FOR OBTAINING ALL NECESSARY PERMITS AND APPROVALS FROM THE STATE OF WYOMING.  
5. THE CONTRACTOR SHALL BE RESPONSIBLE FOR OBTAINING ALL NECESSARY PERMITS AND APPROVALS FROM THE FEDERAL GOVERNMENT.  
6. THE CONTRACTOR SHALL BE RESPONSIBLE FOR OBTAINING ALL NECESSARY PERMITS AND APPROVALS FROM THE LOCAL GOVERNMENT.  
7. THE CONTRACTOR SHALL BE RESPONSIBLE FOR OBTAINING ALL NECESSARY PERMITS AND APPROVALS FROM THE STATE OF WYOMING.  
8. THE CONTRACTOR SHALL BE RESPONSIBLE FOR OBTAINING ALL NECESSARY PERMITS AND APPROVALS FROM THE FEDERAL GOVERNMENT.  
9. THE CONTRACTOR SHALL BE RESPONSIBLE FOR OBTAINING ALL NECESSARY PERMITS AND APPROVALS FROM THE LOCAL GOVERNMENT.

**RECOMMENDATIONS**  
(1) ALL WORK SHALL BE IN ACCORDANCE WITH THE WYOMING DEPARTMENT OF ENVIRONMENT AND NATURAL RESOURCES (DENR) REGULATIONS AND THE WYOMING DEPARTMENT OF LAND AND NATURAL RESOURCES (DLNR) REGULATIONS.  
(2) THE CONTRACTOR SHALL BE RESPONSIBLE FOR OBTAINING ALL NECESSARY PERMITS AND APPROVALS FROM THE DENR AND DLNR.  
(3) THE CONTRACTOR SHALL BE RESPONSIBLE FOR OBTAINING ALL NECESSARY PERMITS AND APPROVALS FROM THE CITY OF CASPER.  
(4) THE CONTRACTOR SHALL BE RESPONSIBLE FOR OBTAINING ALL NECESSARY PERMITS AND APPROVALS FROM THE STATE OF WYOMING.  
(5) THE CONTRACTOR SHALL BE RESPONSIBLE FOR OBTAINING ALL NECESSARY PERMITS AND APPROVALS FROM THE FEDERAL GOVERNMENT.  
(6) THE CONTRACTOR SHALL BE RESPONSIBLE FOR OBTAINING ALL NECESSARY PERMITS AND APPROVALS FROM THE LOCAL GOVERNMENT.

**BACKFILL**  
(1) ALL BACKFILL SHALL BE CLEAN GRANULAR MATERIAL FREE OF LUMPS OVER 3".  
(2) THE CONTRACTOR SHALL BE RESPONSIBLE FOR OBTAINING ALL NECESSARY PERMITS AND APPROVALS FROM THE DENR AND DLNR.  
(3) THE CONTRACTOR SHALL BE RESPONSIBLE FOR OBTAINING ALL NECESSARY PERMITS AND APPROVALS FROM THE CITY OF CASPER.  
(4) THE CONTRACTOR SHALL BE RESPONSIBLE FOR OBTAINING ALL NECESSARY PERMITS AND APPROVALS FROM THE STATE OF WYOMING.  
(5) THE CONTRACTOR SHALL BE RESPONSIBLE FOR OBTAINING ALL NECESSARY PERMITS AND APPROVALS FROM THE FEDERAL GOVERNMENT.  
(6) THE CONTRACTOR SHALL BE RESPONSIBLE FOR OBTAINING ALL NECESSARY PERMITS AND APPROVALS FROM THE LOCAL GOVERNMENT.

**CONCRETE**  
(1) ALL CONCRETE SHALL BE IN ACCORDANCE WITH THE WYOMING DEPARTMENT OF ENVIRONMENT AND NATURAL RESOURCES (DENR) REGULATIONS AND THE WYOMING DEPARTMENT OF LAND AND NATURAL RESOURCES (DLNR) REGULATIONS.  
(2) THE CONTRACTOR SHALL BE RESPONSIBLE FOR OBTAINING ALL NECESSARY PERMITS AND APPROVALS FROM THE DENR AND DLNR.  
(3) THE CONTRACTOR SHALL BE RESPONSIBLE FOR OBTAINING ALL NECESSARY PERMITS AND APPROVALS FROM THE CITY OF CASPER.  
(4) THE CONTRACTOR SHALL BE RESPONSIBLE FOR OBTAINING ALL NECESSARY PERMITS AND APPROVALS FROM THE STATE OF WYOMING.  
(5) THE CONTRACTOR SHALL BE RESPONSIBLE FOR OBTAINING ALL NECESSARY PERMITS AND APPROVALS FROM THE FEDERAL GOVERNMENT.  
(6) THE CONTRACTOR SHALL BE RESPONSIBLE FOR OBTAINING ALL NECESSARY PERMITS AND APPROVALS FROM THE LOCAL GOVERNMENT.

**SEEDING**  
(1) ALL SEEDING SHALL BE IN ACCORDANCE WITH THE WYOMING DEPARTMENT OF ENVIRONMENT AND NATURAL RESOURCES (DENR) REGULATIONS AND THE WYOMING DEPARTMENT OF LAND AND NATURAL RESOURCES (DLNR) REGULATIONS.  
(2) THE CONTRACTOR SHALL BE RESPONSIBLE FOR OBTAINING ALL NECESSARY PERMITS AND APPROVALS FROM THE DENR AND DLNR.  
(3) THE CONTRACTOR SHALL BE RESPONSIBLE FOR OBTAINING ALL NECESSARY PERMITS AND APPROVALS FROM THE CITY OF CASPER.  
(4) THE CONTRACTOR SHALL BE RESPONSIBLE FOR OBTAINING ALL NECESSARY PERMITS AND APPROVALS FROM THE STATE OF WYOMING.  
(5) THE CONTRACTOR SHALL BE RESPONSIBLE FOR OBTAINING ALL NECESSARY PERMITS AND APPROVALS FROM THE FEDERAL GOVERNMENT.  
(6) THE CONTRACTOR SHALL BE RESPONSIBLE FOR OBTAINING ALL NECESSARY PERMITS AND APPROVALS FROM THE LOCAL GOVERNMENT.

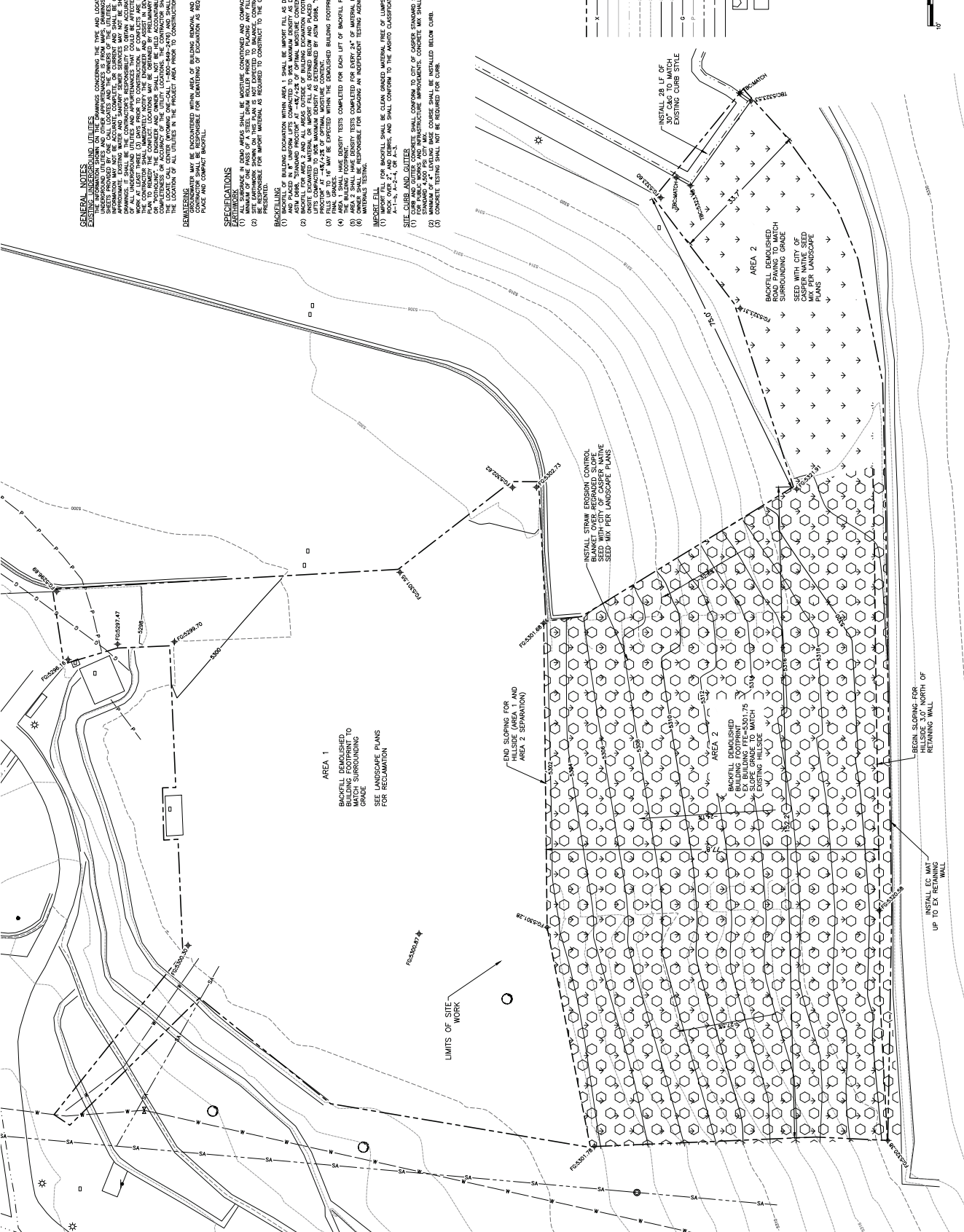
**EROSION CONTROL**  
(1) ALL EROSION CONTROL SHALL BE IN ACCORDANCE WITH THE WYOMING DEPARTMENT OF ENVIRONMENT AND NATURAL RESOURCES (DENR) REGULATIONS AND THE WYOMING DEPARTMENT OF LAND AND NATURAL RESOURCES (DLNR) REGULATIONS.  
(2) THE CONTRACTOR SHALL BE RESPONSIBLE FOR OBTAINING ALL NECESSARY PERMITS AND APPROVALS FROM THE DENR AND DLNR.  
(3) THE CONTRACTOR SHALL BE RESPONSIBLE FOR OBTAINING ALL NECESSARY PERMITS AND APPROVALS FROM THE CITY OF CASPER.  
(4) THE CONTRACTOR SHALL BE RESPONSIBLE FOR OBTAINING ALL NECESSARY PERMITS AND APPROVALS FROM THE STATE OF WYOMING.  
(5) THE CONTRACTOR SHALL BE RESPONSIBLE FOR OBTAINING ALL NECESSARY PERMITS AND APPROVALS FROM THE FEDERAL GOVERNMENT.  
(6) THE CONTRACTOR SHALL BE RESPONSIBLE FOR OBTAINING ALL NECESSARY PERMITS AND APPROVALS FROM THE LOCAL GOVERNMENT.

**LANDSCAPE**  
(1) ALL LANDSCAPE SHALL BE IN ACCORDANCE WITH THE WYOMING DEPARTMENT OF ENVIRONMENT AND NATURAL RESOURCES (DENR) REGULATIONS AND THE WYOMING DEPARTMENT OF LAND AND NATURAL RESOURCES (DLNR) REGULATIONS.  
(2) THE CONTRACTOR SHALL BE RESPONSIBLE FOR OBTAINING ALL NECESSARY PERMITS AND APPROVALS FROM THE DENR AND DLNR.  
(3) THE CONTRACTOR SHALL BE RESPONSIBLE FOR OBTAINING ALL NECESSARY PERMITS AND APPROVALS FROM THE CITY OF CASPER.  
(4) THE CONTRACTOR SHALL BE RESPONSIBLE FOR OBTAINING ALL NECESSARY PERMITS AND APPROVALS FROM THE STATE OF WYOMING.  
(5) THE CONTRACTOR SHALL BE RESPONSIBLE FOR OBTAINING ALL NECESSARY PERMITS AND APPROVALS FROM THE FEDERAL GOVERNMENT.  
(6) THE CONTRACTOR SHALL BE RESPONSIBLE FOR OBTAINING ALL NECESSARY PERMITS AND APPROVALS FROM THE LOCAL GOVERNMENT.

**UTILITIES**  
(1) ALL UTILITIES SHALL BE IN ACCORDANCE WITH THE WYOMING DEPARTMENT OF ENVIRONMENT AND NATURAL RESOURCES (DENR) REGULATIONS AND THE WYOMING DEPARTMENT OF LAND AND NATURAL RESOURCES (DLNR) REGULATIONS.  
(2) THE CONTRACTOR SHALL BE RESPONSIBLE FOR OBTAINING ALL NECESSARY PERMITS AND APPROVALS FROM THE DENR AND DLNR.  
(3) THE CONTRACTOR SHALL BE RESPONSIBLE FOR OBTAINING ALL NECESSARY PERMITS AND APPROVALS FROM THE CITY OF CASPER.  
(4) THE CONTRACTOR SHALL BE RESPONSIBLE FOR OBTAINING ALL NECESSARY PERMITS AND APPROVALS FROM THE STATE OF WYOMING.  
(5) THE CONTRACTOR SHALL BE RESPONSIBLE FOR OBTAINING ALL NECESSARY PERMITS AND APPROVALS FROM THE FEDERAL GOVERNMENT.  
(6) THE CONTRACTOR SHALL BE RESPONSIBLE FOR OBTAINING ALL NECESSARY PERMITS AND APPROVALS FROM THE LOCAL GOVERNMENT.

**DEMOLITION**  
(1) ALL DEMOLITION SHALL BE IN ACCORDANCE WITH THE WYOMING DEPARTMENT OF ENVIRONMENT AND NATURAL RESOURCES (DENR) REGULATIONS AND THE WYOMING DEPARTMENT OF LAND AND NATURAL RESOURCES (DLNR) REGULATIONS.  
(2) THE CONTRACTOR SHALL BE RESPONSIBLE FOR OBTAINING ALL NECESSARY PERMITS AND APPROVALS FROM THE DENR AND DLNR.  
(3) THE CONTRACTOR SHALL BE RESPONSIBLE FOR OBTAINING ALL NECESSARY PERMITS AND APPROVALS FROM THE CITY OF CASPER.  
(4) THE CONTRACTOR SHALL BE RESPONSIBLE FOR OBTAINING ALL NECESSARY PERMITS AND APPROVALS FROM THE STATE OF WYOMING.  
(5) THE CONTRACTOR SHALL BE RESPONSIBLE FOR OBTAINING ALL NECESSARY PERMITS AND APPROVALS FROM THE FEDERAL GOVERNMENT.  
(6) THE CONTRACTOR SHALL BE RESPONSIBLE FOR OBTAINING ALL NECESSARY PERMITS AND APPROVALS FROM THE LOCAL GOVERNMENT.

**CONSTRUCTION**  
(1) ALL CONSTRUCTION SHALL BE IN ACCORDANCE WITH THE WYOMING DEPARTMENT OF ENVIRONMENT AND NATURAL RESOURCES (DENR) REGULATIONS AND THE WYOMING DEPARTMENT OF LAND AND NATURAL RESOURCES (DLNR) REGULATIONS.  
(2) THE CONTRACTOR SHALL BE RESPONSIBLE FOR OBTAINING ALL NECESSARY PERMITS AND APPROVALS FROM THE DENR AND DLNR.  
(3) THE CONTRACTOR SHALL BE RESPONSIBLE FOR OBTAINING ALL NECESSARY PERMITS AND APPROVALS FROM THE CITY OF CASPER.  
(4) THE CONTRACTOR SHALL BE RESPONSIBLE FOR OBTAINING ALL NECESSARY PERMITS AND APPROVALS FROM THE STATE OF WYOMING.  
(5) THE CONTRACTOR SHALL BE RESPONSIBLE FOR OBTAINING ALL NECESSARY PERMITS AND APPROVALS FROM THE FEDERAL GOVERNMENT.  
(6) THE CONTRACTOR SHALL BE RESPONSIBLE FOR OBTAINING ALL NECESSARY PERMITS AND APPROVALS FROM THE LOCAL GOVERNMENT.



**LEGEND**  
 EX SON  
 EX TREE  
 EX GAS RISER  
 EX POWER POLE  
 EX POWER TRANSFORMER  
 EX LIGHT POLE  
 EX ELECTRIC VAULT  
 EX SANITARY MANHOLE  
 EX WATER VALVE  
 EX STOP SIGN  
 EX SIGN  
 EX DRIVE  
 EX EDGE ASPHALT  
 EX EDGE CONCRETE  
 EX FLOWLINE  
 EX CONTOUR MAJOR  
 EX CONTOUR MINOR  
 EX CONTOUR MAJOR  
 EX CONTOUR MINOR  
 EX GASLINE  
 EX FURNISHING  
 EX FURNISHING  
 EX METEORIC  
 EX RETAINING WALL  
 EX RETAINING WALL  
 PROPOSED EROSION BLANKET  
 PROPOSED SEEDING

HORIZONTAL SCALE: 1"=40'  
 VERTICAL SCALE: 1"=4'

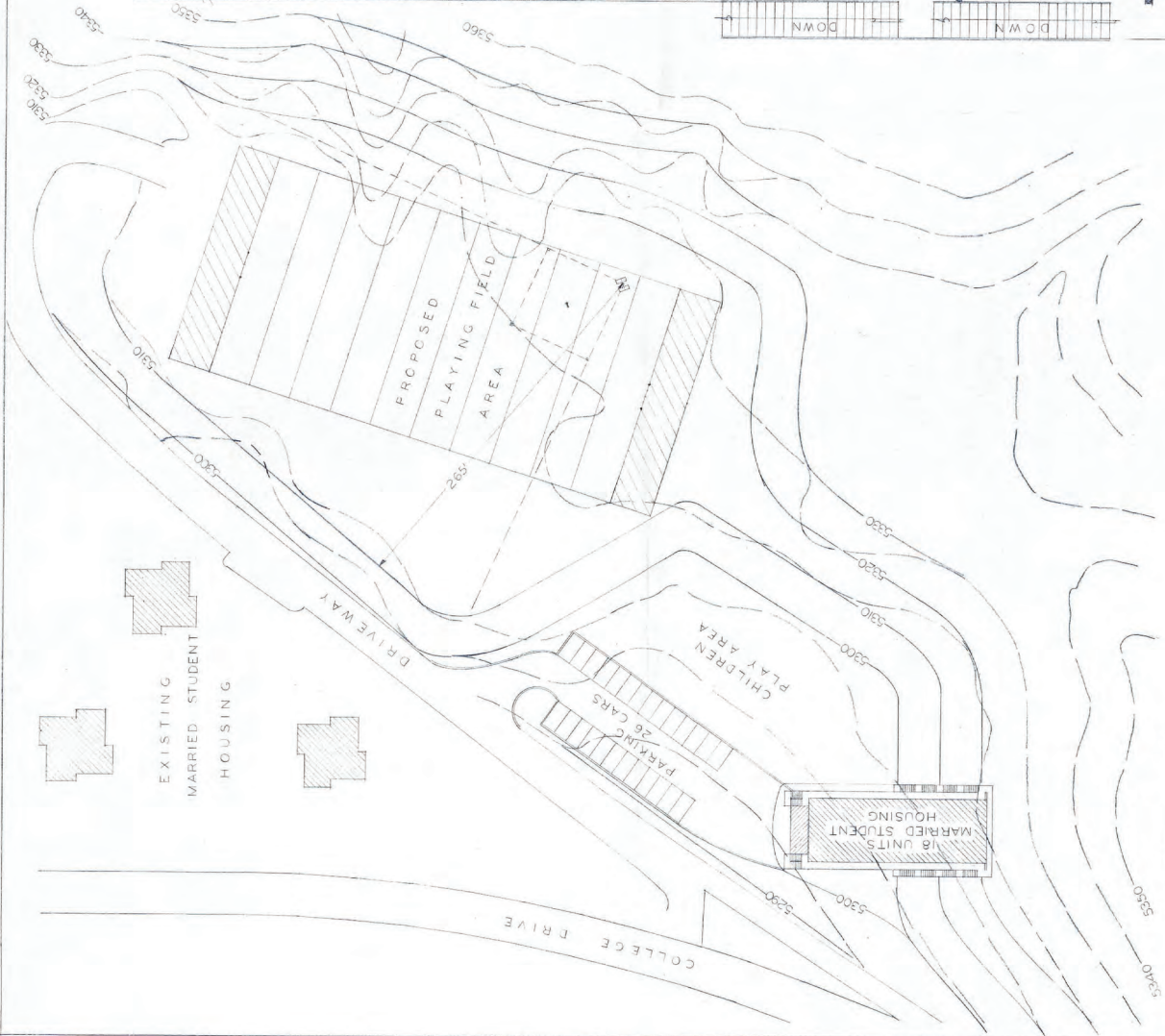






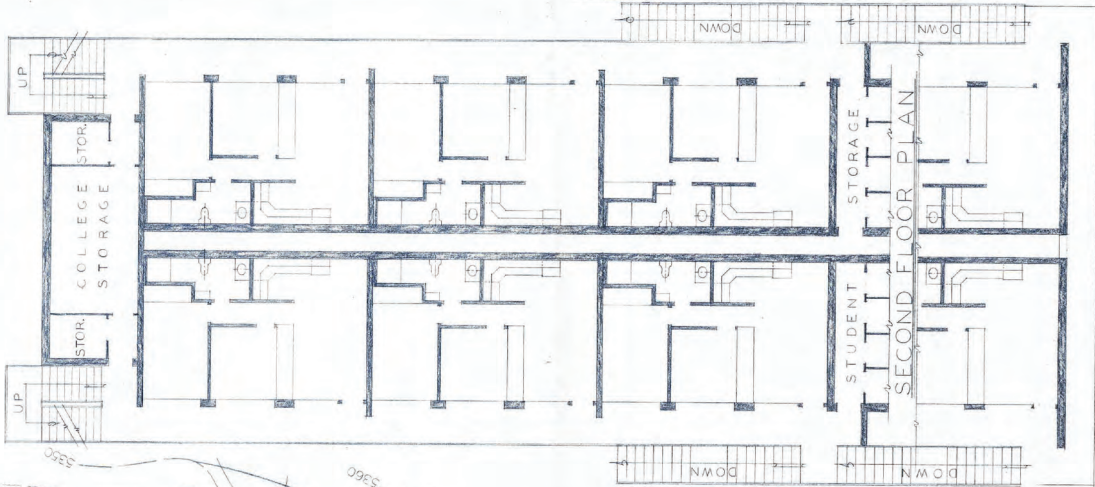
# **WHEELER TERRACE DEMOLITION PROJECT REFERENCE DRAWINGS**

**THE ATTACHED DRAWINGS ARE FOR REFERENCE AND INFORMATIONAL PURPOSES ONLY. THE OWNER AND ARCHITECT CANNOT GUARANTEE THE ACCURACY OF THESE DRAWINGS. IT IS THE CONTRACTOR'S RESPONSIBILITY TO FIELD VERIFY EXISTING CONDITIONS, DIMENSIONS, MATERIALS, VOLUMES, AND QUANTITIES PRIOR TO BIDDING.**

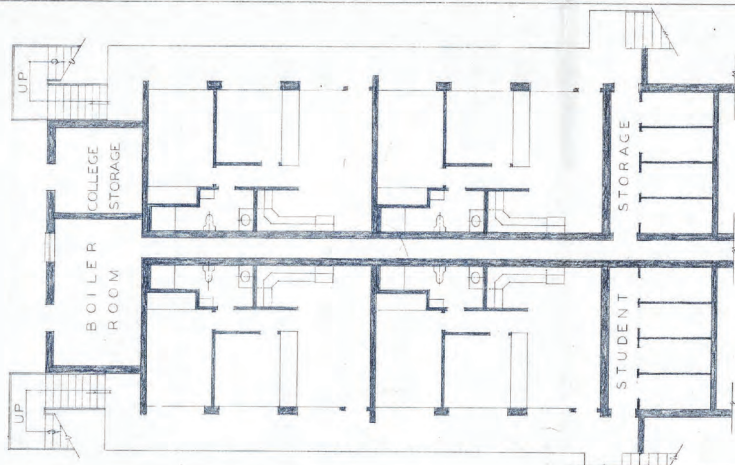


**SITE PLAN**

SCALE ~ 1" = 40'



**SECOND FLOOR PLAN**

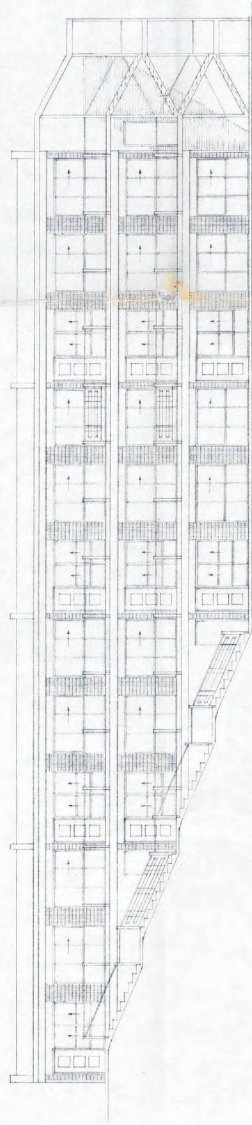


**FIRST FLOOR PLAN**

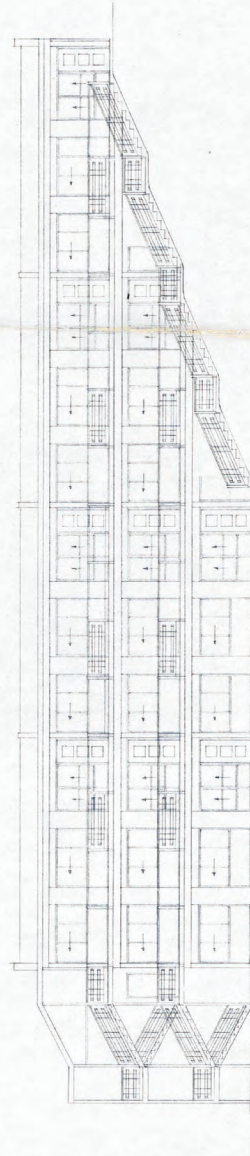
ALL FLOOR PLANS - SCALE - 1" = 8'



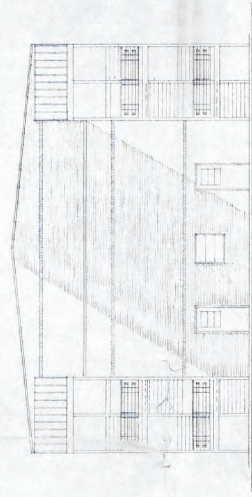
MARRIED STUDENT APARTMENTS  
CASPER COLLEGE  
**R. W. SCHROPPER**  
*Architect*  
CASPER WYOMING



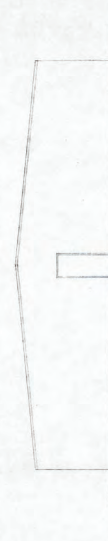
EAST ELEVATION



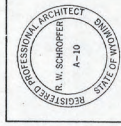
WEST ELEVATION



NORTH ELEVATION

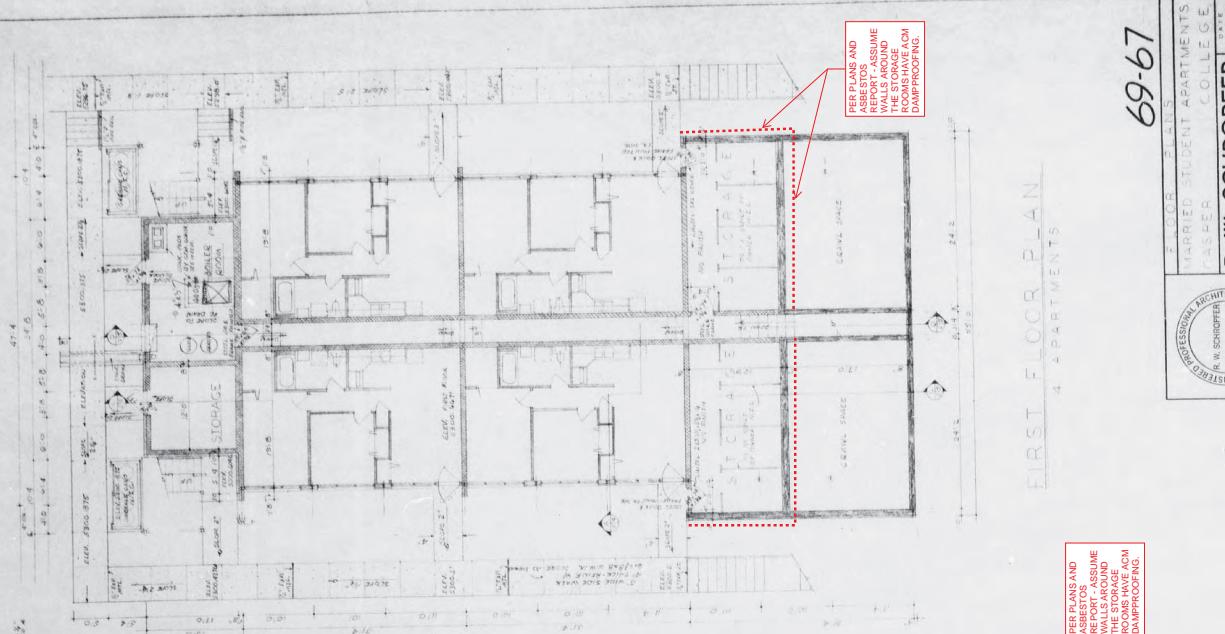


SOUTH ELEVATION



MARRIED STUDENT APARTMENTS  
CASPER COLLEGE  
**R. W. SCHROPFER**  
*Architect*  
CASPERS WYOMING  
NOV 17 '63  
PROJ. NO. 5907  
SHEET NO. 10

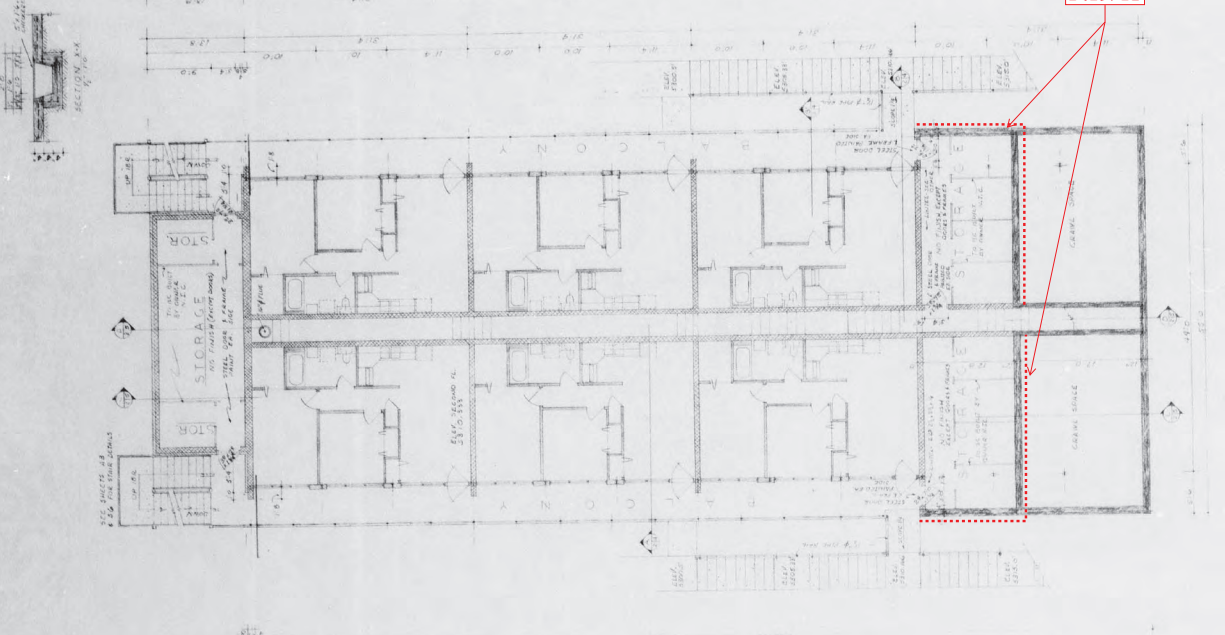




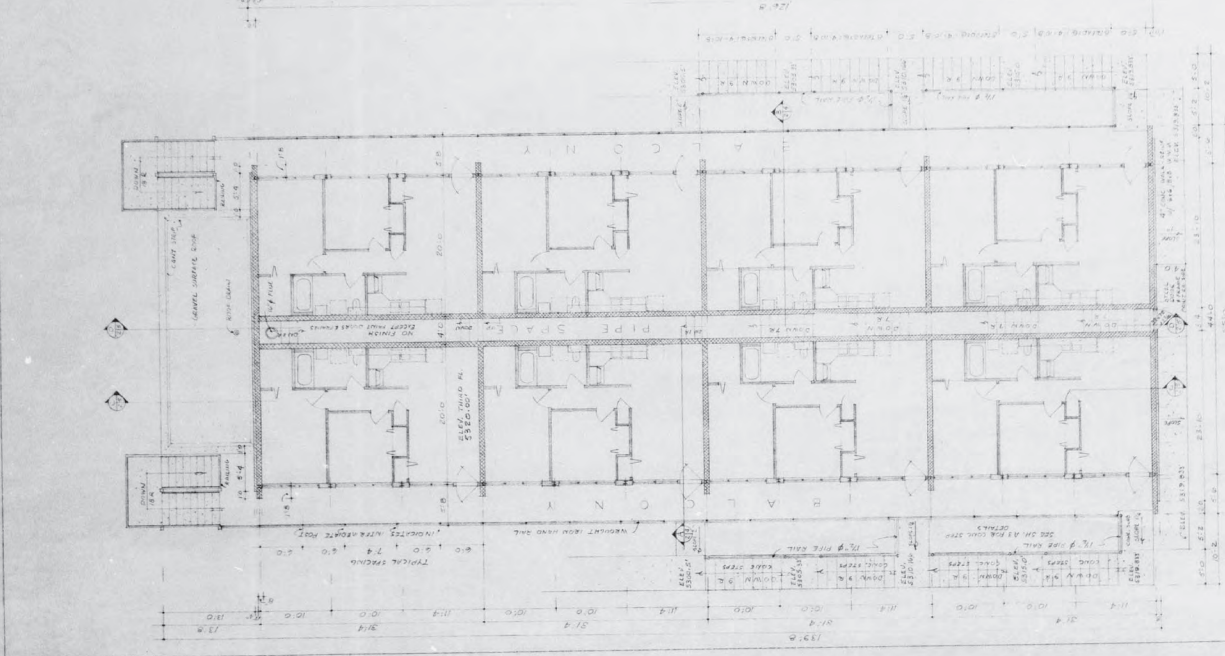
FIRST FLOOR PLAN  
4 APARTMENTS

69-67

REGISTERED PROFESSIONAL ARCHITECT  
R. W. SCHROPPER  
A-10  
MARIED STUDENT APARTMENTS  
CASPER COLLEGE  
ANNETT & CASPER WYOMING



SECOND FLOOR PLAN  
6 APARTMENTS



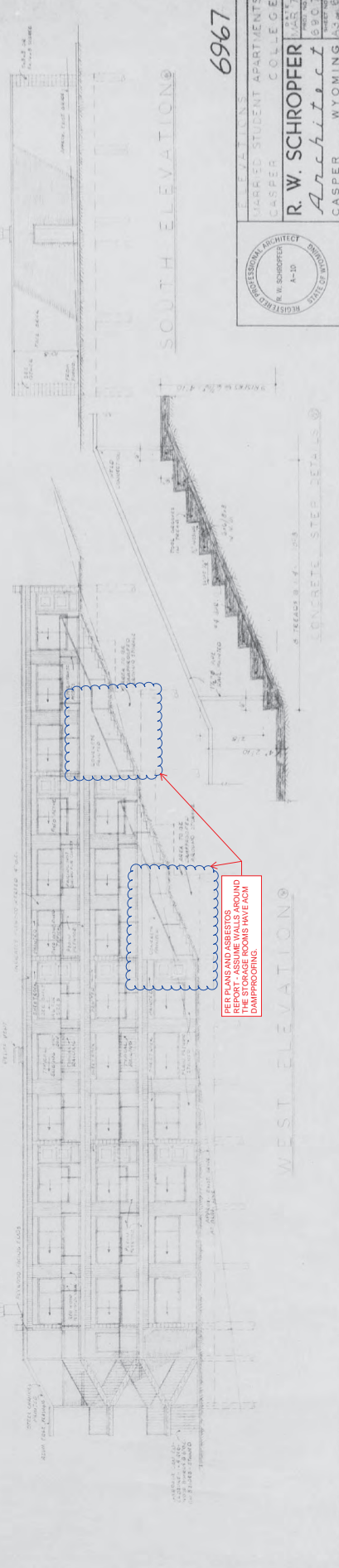
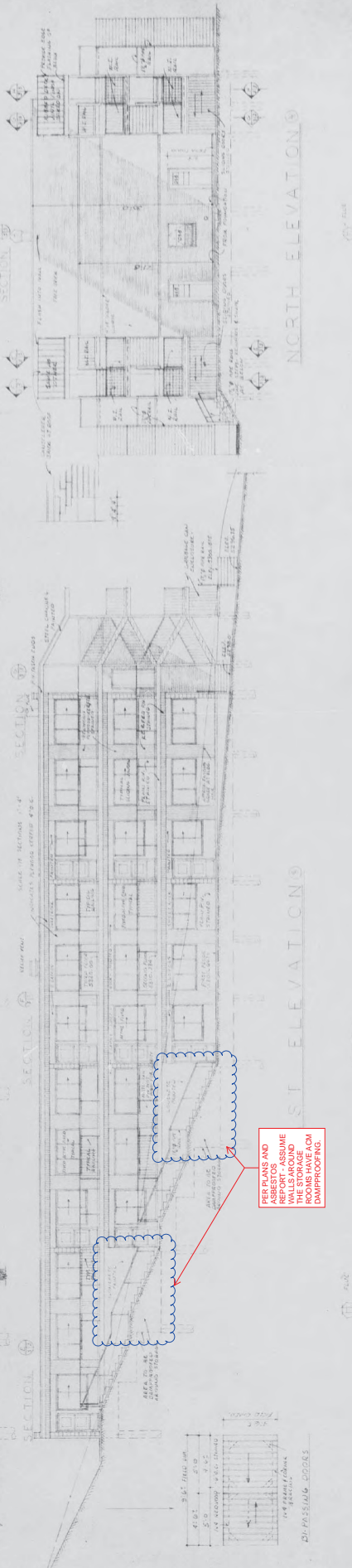
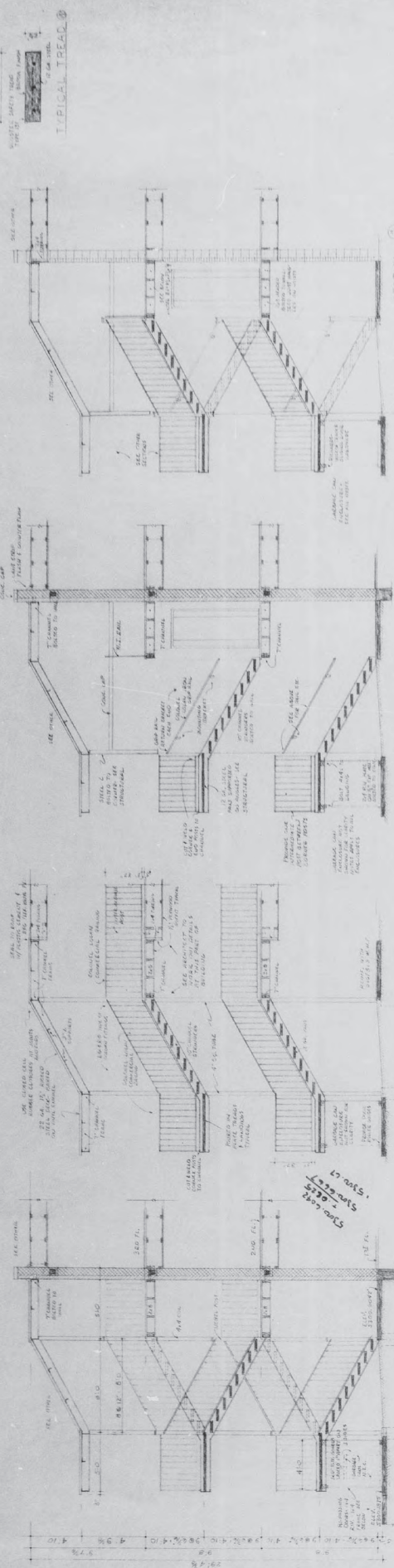
THIRD FLOOR PLAN  
6 APARTMENTS

SCALE ALL PLANS 1" = 8'

NOTE: CONTRACTOR TO VERIFY ALL ROOMS FOR ASBESTOS. REMOVE ALL ASBESTOS EXCEPT WHERE SHOWN OTHERWISE ON THESE PLANS.

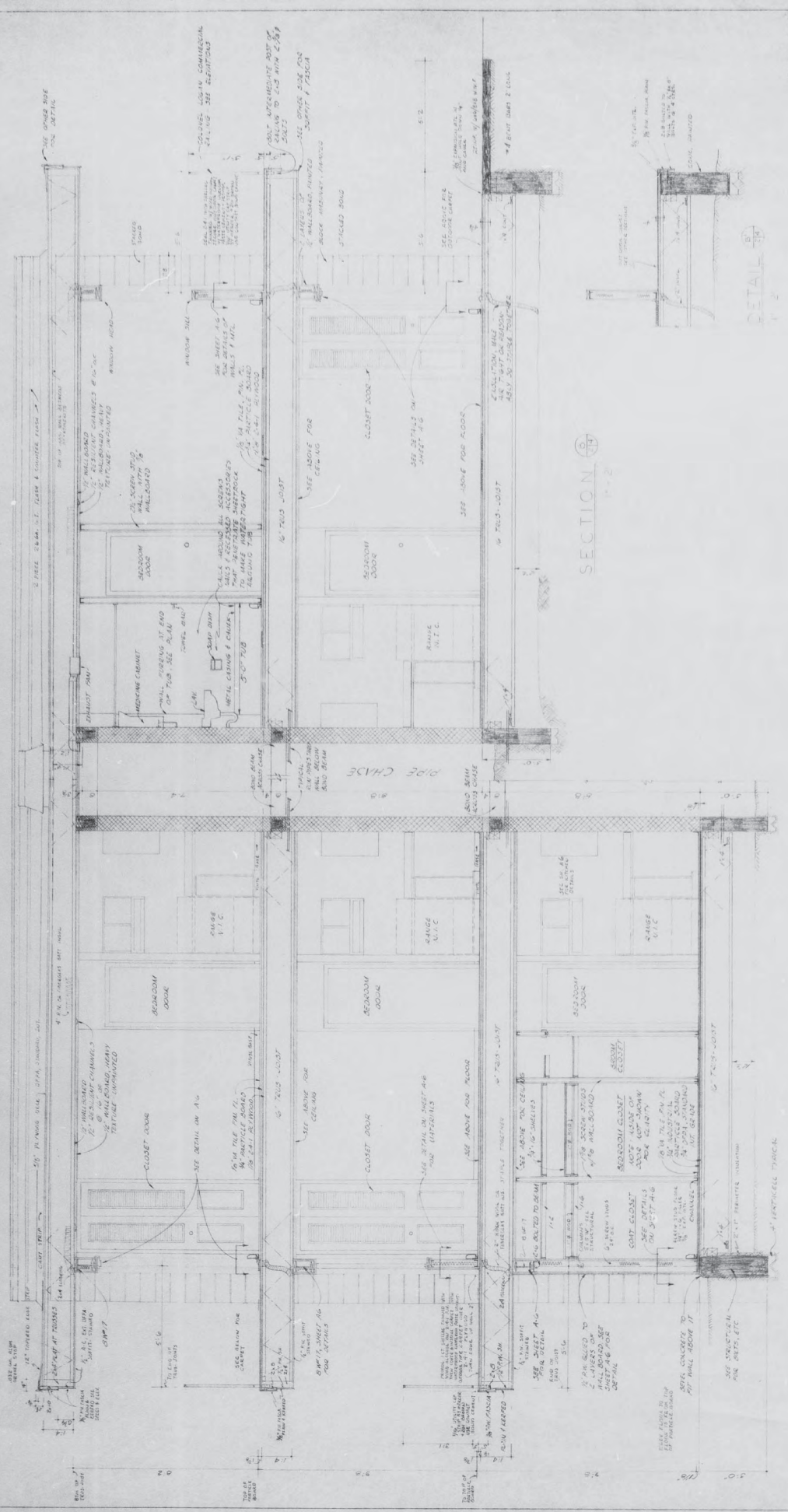
6967

REGISTERED ARCHITECT  
 R. W. SCHROPFER  
 A-10  
 REGISTERED ARCHITECT  
 MARRIED STUDENT APARTMENTS  
 CASPER COLLEGE  
 R. W. SCHROPFER ARCHITECTS  
 6907  
 CASPER WYOMING 82401



PER PLANS AND ASBESTOS  
 REMOVAL ASSUME  
 WALLS AROUND  
 THE STORAGE  
 ROOMS HAVE A  
 DAMPROOFING

PER PLANS AND ASBESTOS  
 REMOVAL ASSUME  
 THE STORAGE ROOMS HAVE A  
 DAMPROOFING



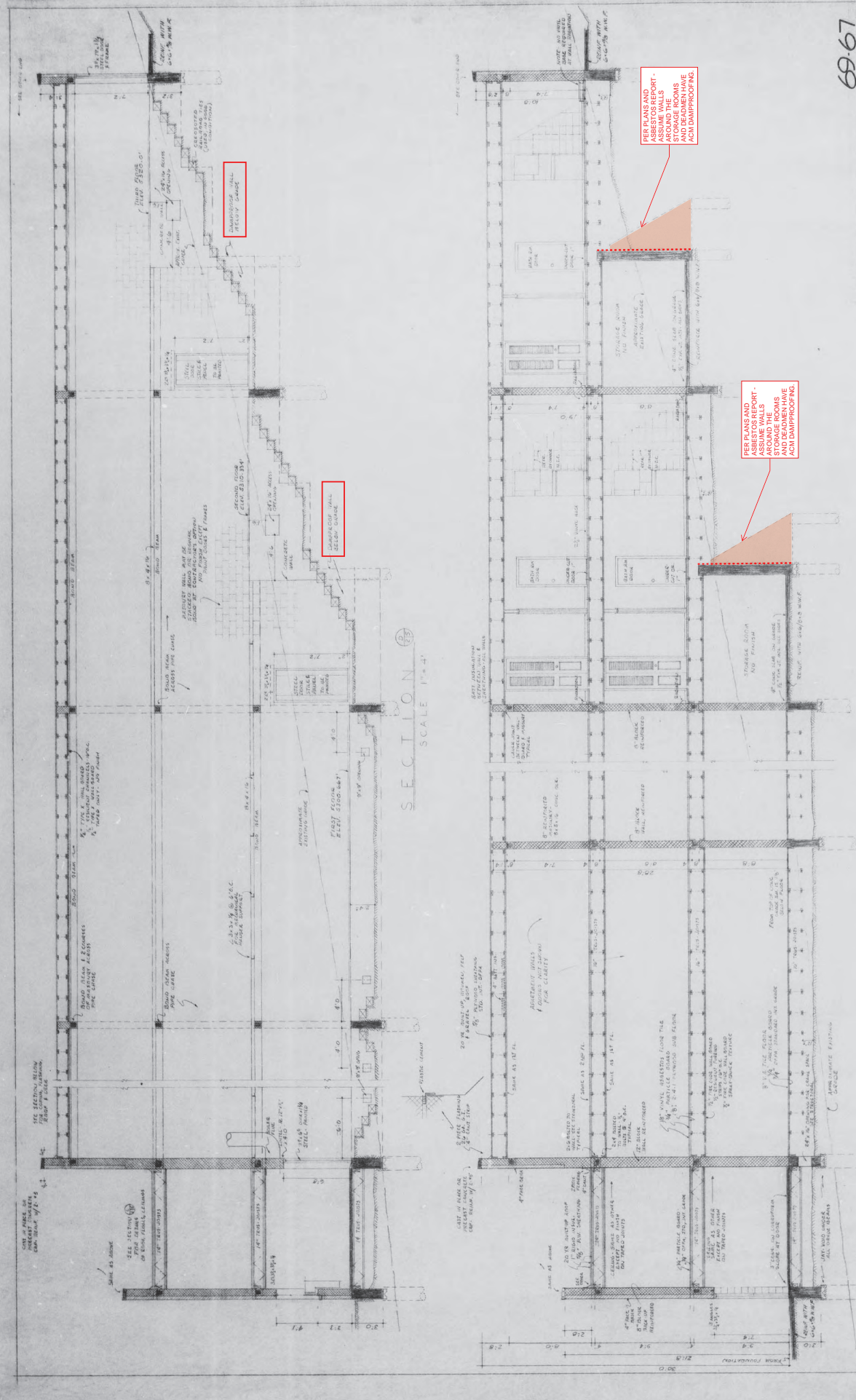
SECTION 1-1  
1" = 2'

SECTION 1-1  
SCALE 1" = 2'

69-67

BUILDING SECTIONS  
 HARRIED STUDENT APARTMENTS  
 CASPER COLLEGE  
 R. W. SCHROPFER ARCHITECT  
 CASPER WYOMING

REGISTERED PROFESSIONAL ARCHITECT  
 R. W. SCHROPFER  
 A-10  
 LICENSED UNDER THE  
 ARCHITECTURE ACT  
 MARCH 7, 1907  
 WYOMING  
 1-1-5



SECTION 1  
SCALE 1" = 2'

SECTION 2  
SCALE 1" = 4'

69-67

BUILDING SECTIONS  
MARRIED STUDENT APARTMENTS  
CASPER COLLEGE

R. W. SCHROFFER ARCHITECT  
A-10

MAR 77  
1907  
SHEET NO. 6  
CASPER WYOMING

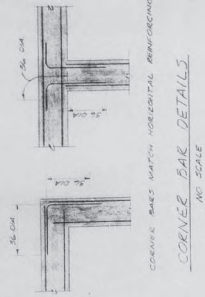
PER PLANS AND ASSUMPTIONS... AROUND THE WALLS AND BEADEN HAVE ACH DAMPROOFING

PER PLANS AND ASSUMPTIONS... STORAGE ROOMS AND BEADEN HAVE ACH DAMPROOFING

CONCRETE WALL REINFORCED WITH STEEL

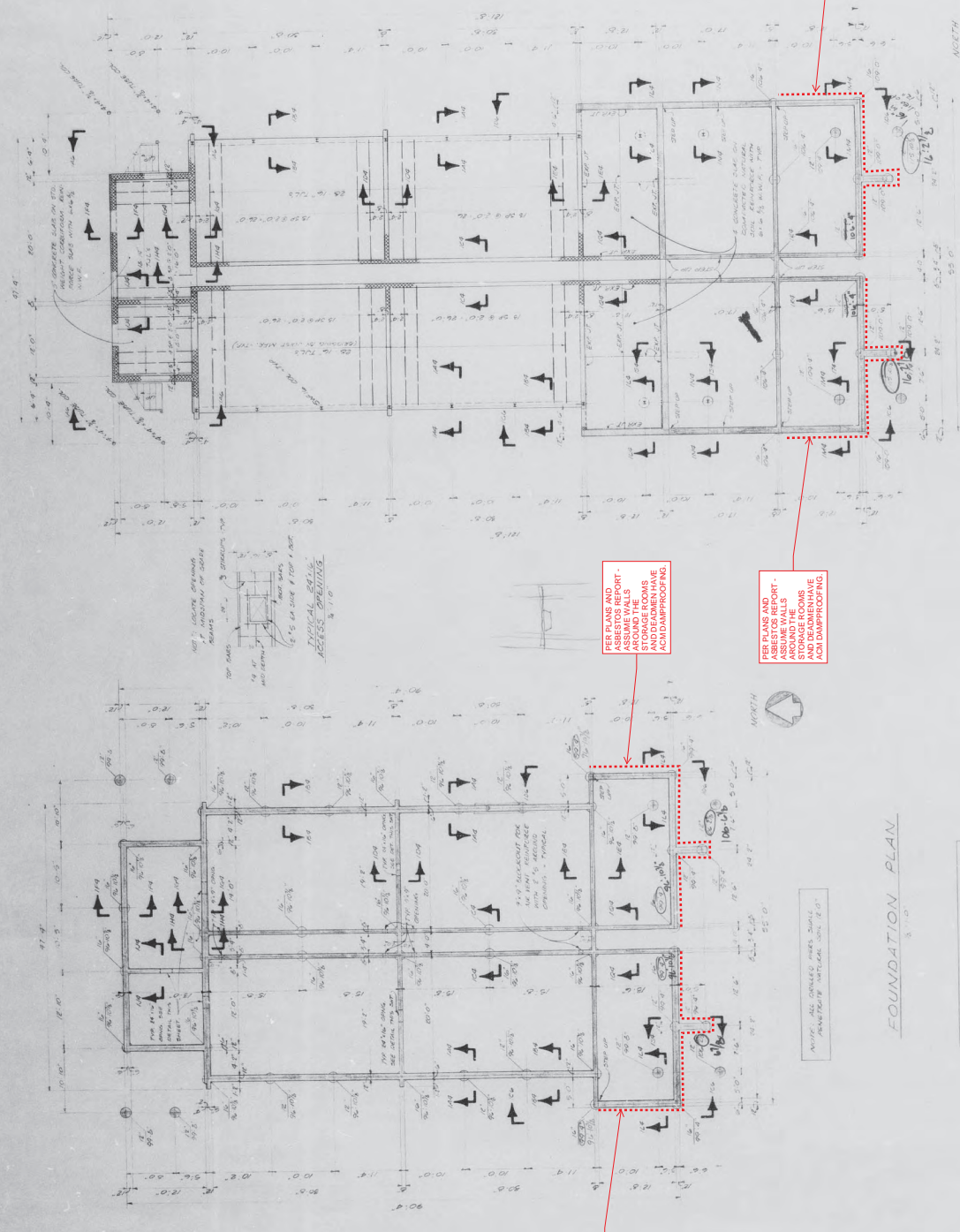
CONCRETE WALL REINFORCED WITH STEEL





CORNER BARS MATCH HORIZONTAL REINFORCING  
CORNER BAR DETAILS  
NO. SCALE

FINISH FLOOR SLAB  
CONCRETE SLAB ON TOP OF  
FOUNDATION WALLS  
AND DECKING



PER PLANS AND  
ASBESTOS REPORT -  
ASSUME WALLS  
AROUND THE  
STORAGE ROOMS  
AND DECKING HAVE  
ACM DAMPROOFING.

PER PLANS AND  
ASBESTOS REPORT -  
ASSUME WALLS  
AROUND THE  
STORAGE ROOMS  
AND DECKING HAVE  
ACM DAMPROOFING.

PER PLANS AND  
ASBESTOS REPORT -  
ASSUME WALLS  
AROUND THE  
STORAGE ROOMS  
AND DECKING HAVE  
ACM DAMPROOFING.

PER PLANS AND  
ASBESTOS REPORT -  
ASSUME WALLS  
AROUND THE  
STORAGE ROOMS  
AND DECKING HAVE  
ACM DAMPROOFING.

FOUNDATION PLAN  
3-10

NOTE: ELEVATION OF 100.0' FOR  
FIRST FLOOR IN CONSTRUCTION OF  
STORY AT ABOVE FLOOR LEVEL. SEE  
FLOOR PLAN.

69-67

FOUNDATION PLANS  
MARRIED STUDENT APARTMENTS  
CASPER COLLEGE

R. W. SCHROFFER  
Architect  
CASPER WYOMING 82401

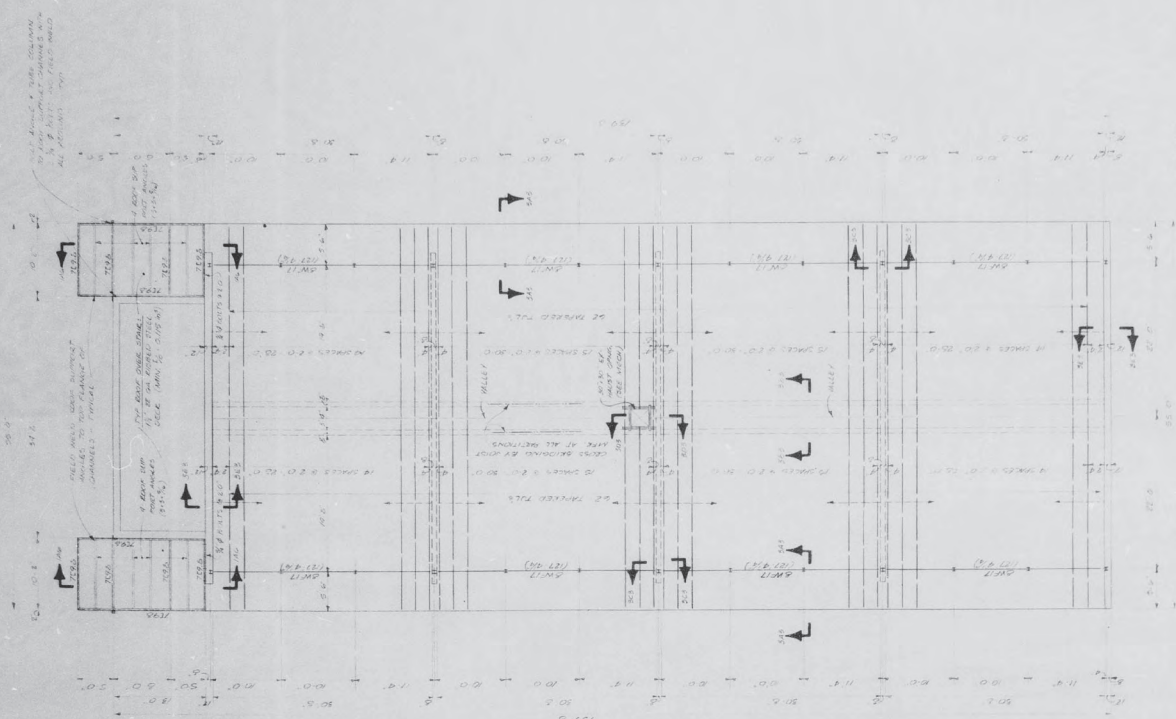
DATE: MAR. 70  
SHEET NO. 6907  
SHEET NO. 11 OF 16

REGISTERED ARCHITECT  
R. W. SCHROFFER  
A-10

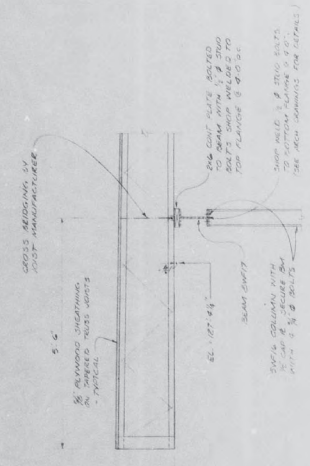
REGISTERED ARCHITECT  
R. W. SCHROFFER  
A-10

FIRST FLOOR FRAMING PLAN  
3-10

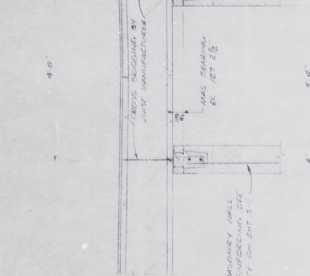




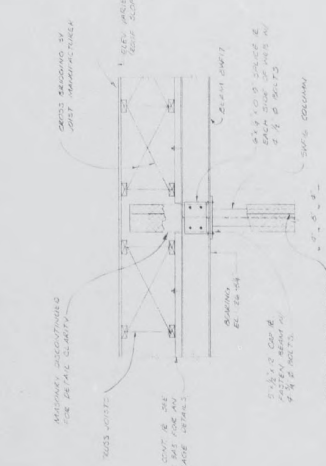
ROOF FRAMING PLAN  
1/8" = 1'-0"



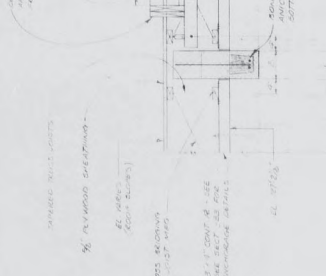
SECTION 3A3  
1/8" = 1'-0"



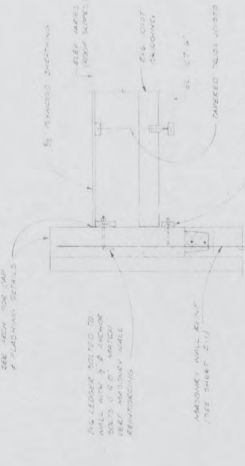
SECTION 3B3  
1/8" = 1'-0"



SECTION 3C3  
1/8" = 1'-0"



SECTION 3D3  
1/8" = 1'-0"



SECTION 3E3  
1/8" = 1'-0"

69-67

COLLEGE BUILDINGS DETAILS  
VARRIED STUDENT APARTMENTS  
CASPER COLLEGE

R. W. SCHROPFER ARCHITECT  
6907  
CASPER WYOMING 82408

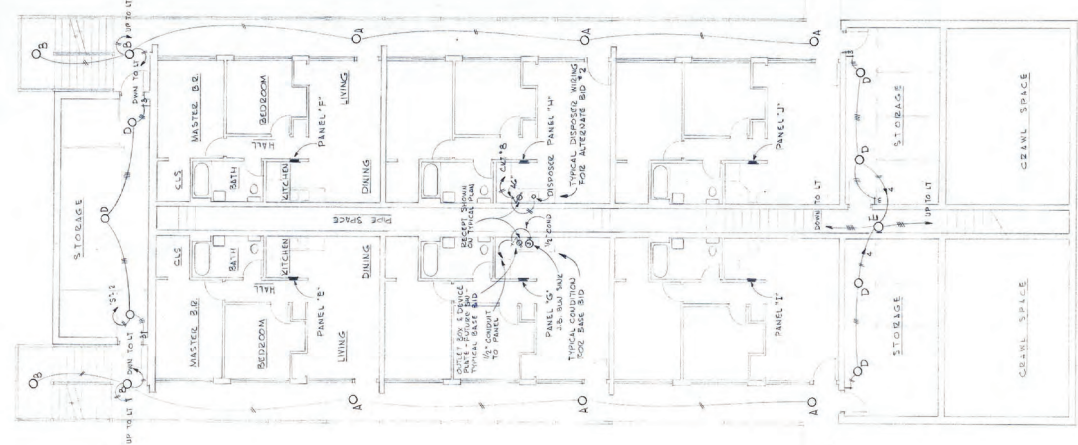
REGISTERED PROFESSIONAL ARCHITECT  
A-10  
R. W. SCHROPFER  
STATE OF WYOMING

REGISTERED PROFESSIONAL ENGINEER  
A. C. WOLFE, JR.  
W. H. WILSON, JR.  
P. E. SUE  
STATE OF WYOMING

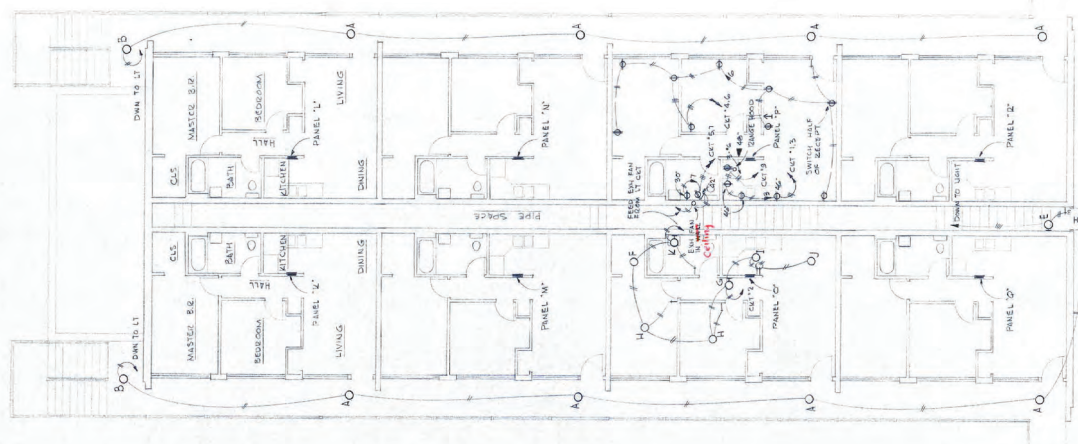








SECOND FLOOR PLAN



THIRD FLOOR PLAN



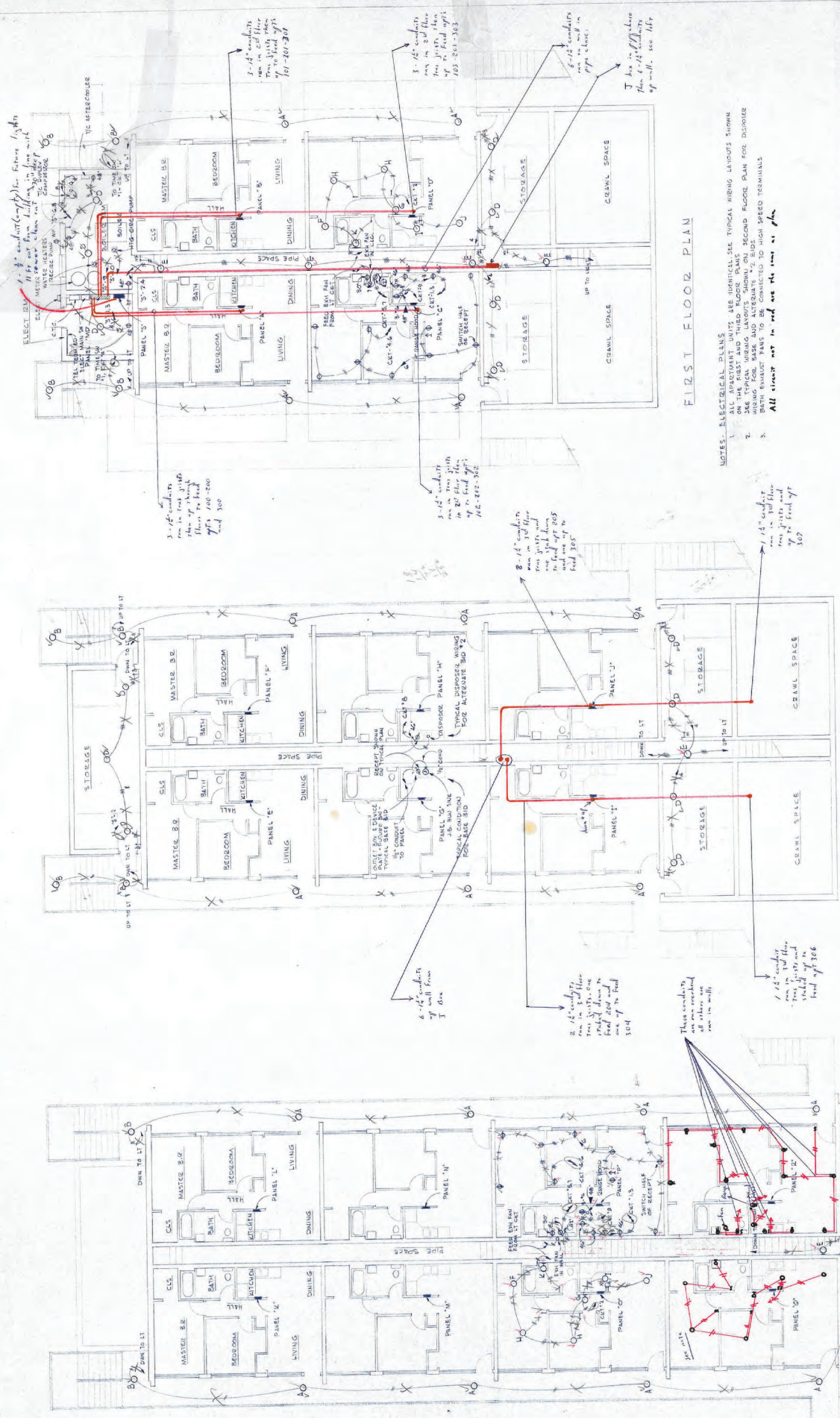
FIRST FLOOR PLAN

- NOTES - ELECTRICAL PLANS
1. ALL APARTMENT UNITS ARE IDENTICAL. SEE TYPICAL WIRING LAYOUTS SHOWN ON THE FIRST AND THIRD FLOOR PLANS.
  2. ALL WIRING SHALL BE IN ACCORDANCE WITH THE NATIONAL ELECTRICAL CODE, 1975 EDITION, AS AMENDED.
  3. BATH EXHAUST FAN TO BE CONNECTED TO HIGH SPEED TERMINALS.

ELECTRICAL FLOOR PLANS

SCALE: 1/8" = 1'-0"

PLANS  
 MARRIED STUDENT APARTMENTS  
 CASPER COLLEGE  
 R. W. SCHROFFER ARCHITECT  
 REGISTERED PROFESSIONAL ARCHITECT  
 STATE OF WYOMING  
 A-10  
 463  
 MAR 7 '70  
 6907  
 E2, p. 2



FIRST FLOOR PLAN

SECOND FLOOR PLAN

THIRD FLOOR PLAN

- NOTES - ELECTRICAL PLANS
1. ALL APARTMENT UNITS SEE IDENTICAL SEE TYPICAL WIRING LAYOUTS SHOWN
  2. SEE TYPICAL WIRING LAYOUTS SHOWN ON SECOND FLOOR PLAN FOR DISBURSE WIRING FOR BATH AND ALTERNATE 1/2" EIDS
  3. BATH EXHAUST FANS TO BE CONNECTED TO HIGH SPEED TERMINALS
- All circuit not in red are not in plan

PLANS WARRIED STUDENT APARTMENTS  
CASPER COLLEGE

**R. W. SCHROFFER**  
Architect  
CASPER WYOMING

REGISTERED PROFESSIONAL ARCHITECT  
R. W. SCHROFFER  
A-10  
STATE OF WYOMING

REGISTERED PROFESSIONAL ARCHITECT  
JAMES D. GRIFFITH  
483  
STATE OF WYOMING

PROJ. NO. 6907  
DATE: MAR 170

SCALE 1/8" = 1'-0"

ELECTRICAL FLOOR PLANS

THIRD FLOOR PLAN

After lighting circuits are in walling



JULY 27 70  
 FOR  
 WALKINSHAW

GENERAL NOTES  
 STRUCTURAL STEEL - ASTM A36  
 BOLTS - ASTM A307 4 1/2"  
 WELDING MATERIAL - ASTM E 66  
 PAINT: DUC COAT  
 ROAST ELEMENT 6/8  
 RED PAPER

APPROVED FOR FIELD USE

**TRI-STATE STEEL CO.**  
 CHESTNUT, WYOMING  
 MARKED STUDENT APARTMENTS  
 CASPAR COLLEGE

BY: [Signature]  
 DATE: 7/11/70  
 SHEET NO: 11  
 OF: 10



ANCHOR-PLATE SETTING PLANS 1/8" = 1'-0"  
 FIRST FLOOR  
 FINISH FLOOR EL. = 100'-0"

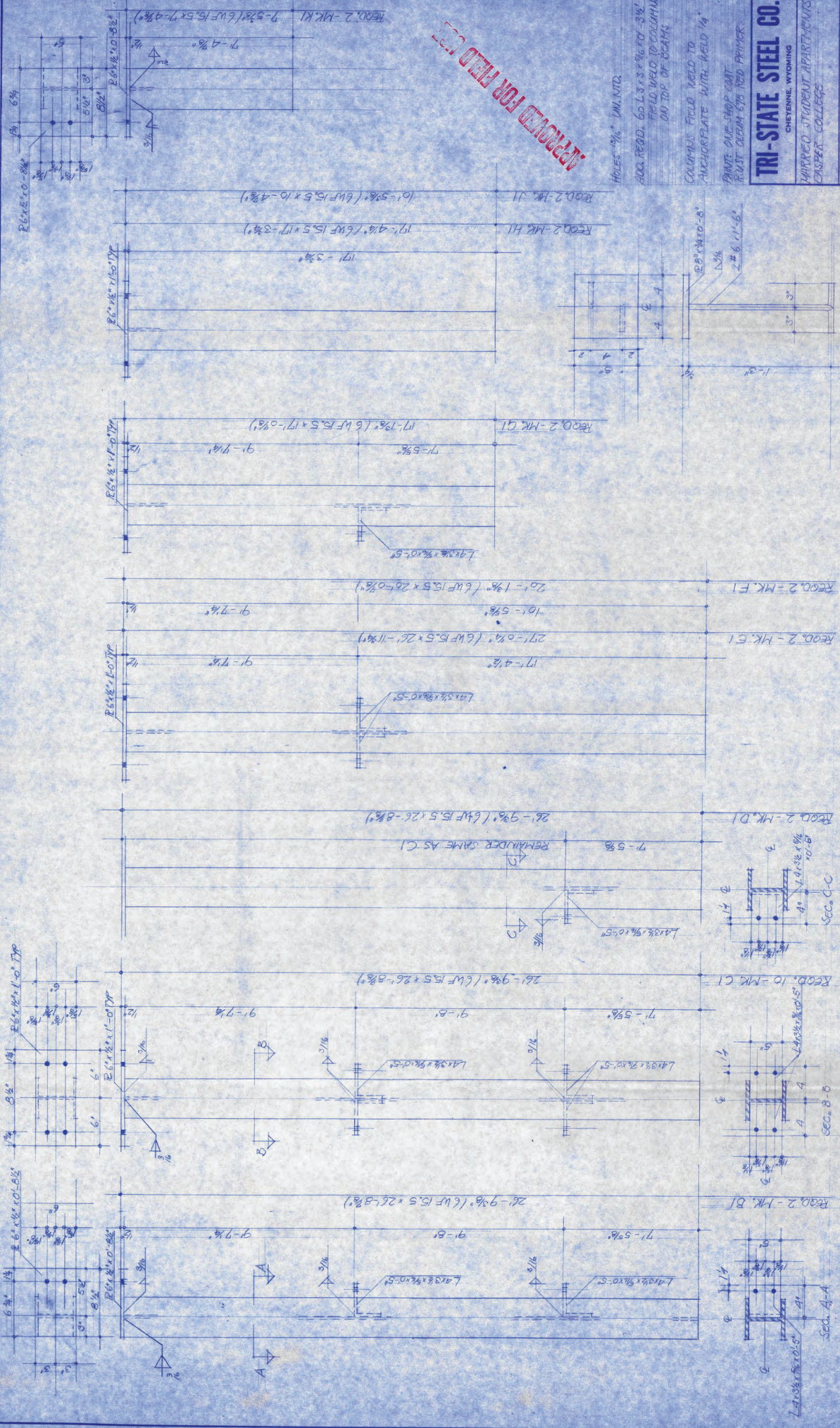
SECOND FLOOR  
 FINISH FLOOR EL. = 109'-6"

THIRD FLOOR  
 FINISH FLOOR EL. = 119'-4"

COLUMN U.D.



**APPROVED FOR FIELD USE**

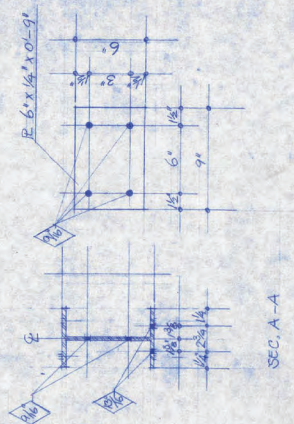


HOLES 3/16" MIN. DIA.  
 ADD RECD. 602.3 x 3/8 x 10-5 1/2"  
 FIELD WELD TO COLUMN  
 ON TOP OF BEAMS  
 COLUMN'S FIELD WELD TO  
 ANCHORAGE WITH WELD 1/4"  
 PAINT ONE-SHAP GALT  
 MUST CLEAN EYE AND PRIMER

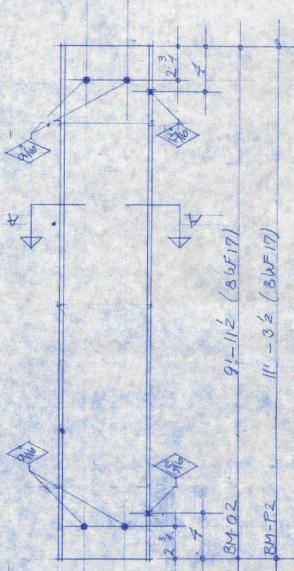
**TRI-STATE STEEL CO.**  
 CHEYENNE, WYOMING  
 WARRIED STUDENT APARTMENTS  
 CASPER COLLEGE

DESIGNED BY: [Signature]  
 DRAWN BY: [Signature]  
 CHECKED BY: [Signature]  
 DATE: 1/5/11

RECD. 80. MK. A1 - ANCHOR PLATE  
 THIS SHEET SUBSTITUTES SHEET 1



CONCRETE REQD. 44



BEAM REQD. 14 - MK. 02  
BEAM REQD. 6 - MK. PZ



BEAM REQD. 2 - MK. N/2  
BEAM REQD. 2 - MK. RZ



BEAM REQD. 20 - MK. L2  
BEAM REQD. 10 - MK. M2

FOUNDER BRUSHED STAINS TO BE FIELD APPLIED  
JULIEN OF THREADED STRIPS



PIPE SUPPORT REQD. 32

LINTELS L 3/8\" x 3 1/2\" x 1/4\"

REQD.	WIDTH OF OPENING	TOTAL LENGTH
8	3'-0"	4'-0"
16	3'-4"	4'-4"
6	3'-8"	4'-8"
1	4'-0"	5'-0"

SIDWALK DRAIN COVER  
REQD. 1 CHECKED R. 18\" x 14\" x 5'-0"

CORRUGUM

REQD.	WIDTH OF FLOOR	LENGTH OF FLOOR
6	12'-0"	10'-0"
6	12'-0"	20'-0"

ROOF DECKING STD. 1/2\" ZSQA, VINYL FINISH

REQD.	WIDTH OF DECK	LENGTH OF DECK
4	10'-2"	5'-2"
4	10'-2"	9'-1"
4	10'-2"	8'-11"

CONNECTIONS FIELD WELDED AND SPACED

225	BOLT # 3/8\" x 7 1/2
140	BOLT # 1/2\" x 1 1/2
38	ANCHOR BOLT # 3/4\" x 1'-0"
12	BAR # 3/8\" x 0'-6"

PAINT: OIL SOAP COAT  
RUST BEAM END RED PRIMER

**TRI-STATE STEEL CO.**  
CHEYENNE, WYOMING

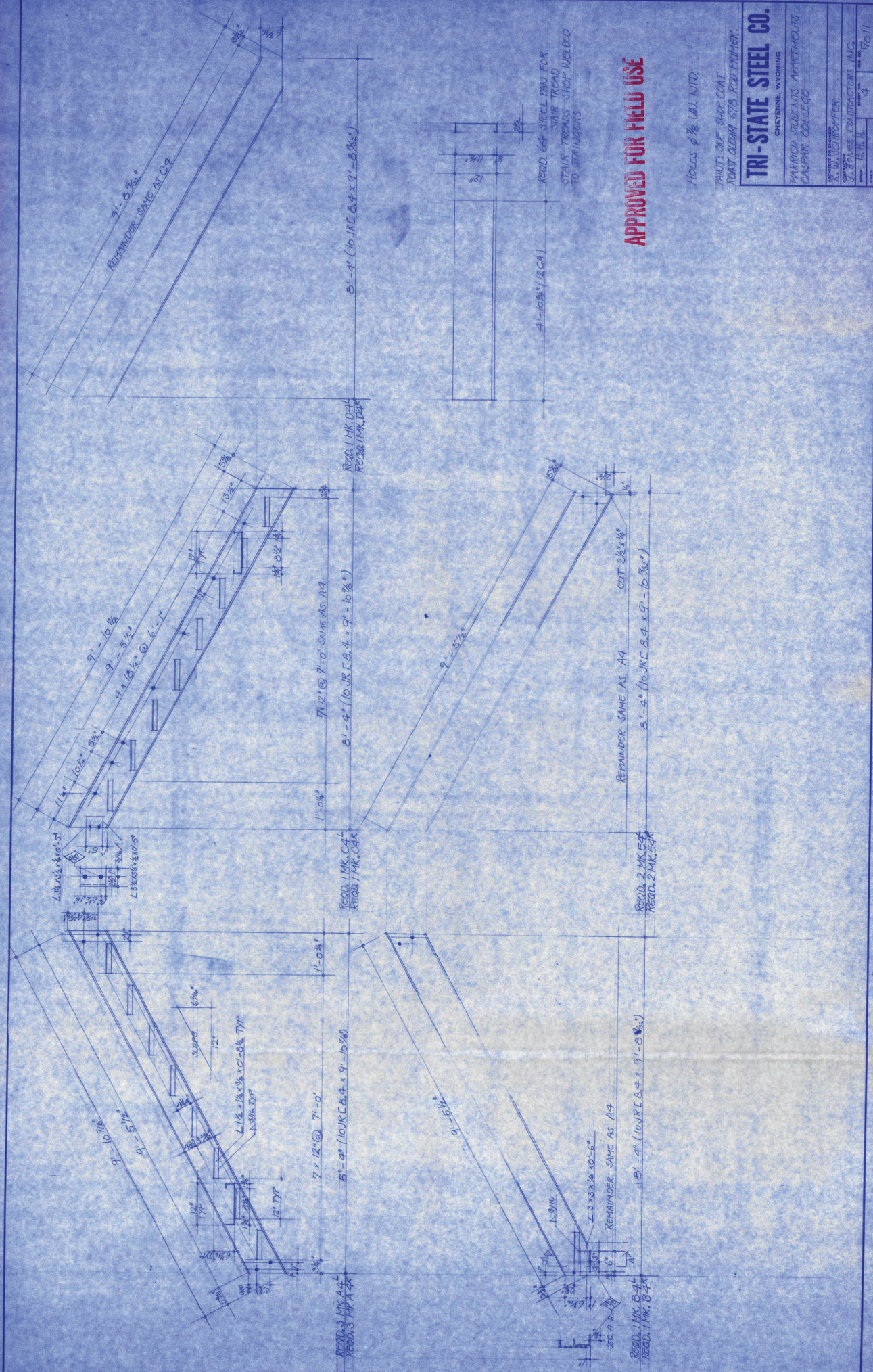
MARSH STUDENT APARTMENTS  
CASPER COLLEGE

ENGINEER  
J. JONES  
H.H.H.

DATE 7/11

APPROVED FOR FIELD USE





**APPROVED FOR FIELD USE**

HOLDS  $\phi$  1/2" UNL. NUTS.  
 PAINTED W/ SHOP COAT  
 ROAST OLEUM 678 RED PRIMER.  
**TRI-STATE STEEL CO.**  
 CHEYENNE, WYOMING  
 TRAINED STUDENTS APPRENTICES  
 CASPAR COLLEGE  
 X. W. SCHROEDER  
 SUPERVISOR  
 S. J. SPENCE CONTRACTORS, INC.  
 CHEYENNE, WYOMING  
 DATE: 11.14.11  
 SHEET NO. 4 OF 11

REQD. 64 STEEL PAN FOR  
 SINK TREAD  
 STAIR TREADS SHIP WELDED  
 TO STRINGERS

REQD. 1 MK. D-4  
 REQD. 1 MK. D-4K

REQD. 2 MK. E-4  
 REQD. 2 MK. E-4K

REQD. 1 MK. C-4  
 REQD. 1 MK. C-4K

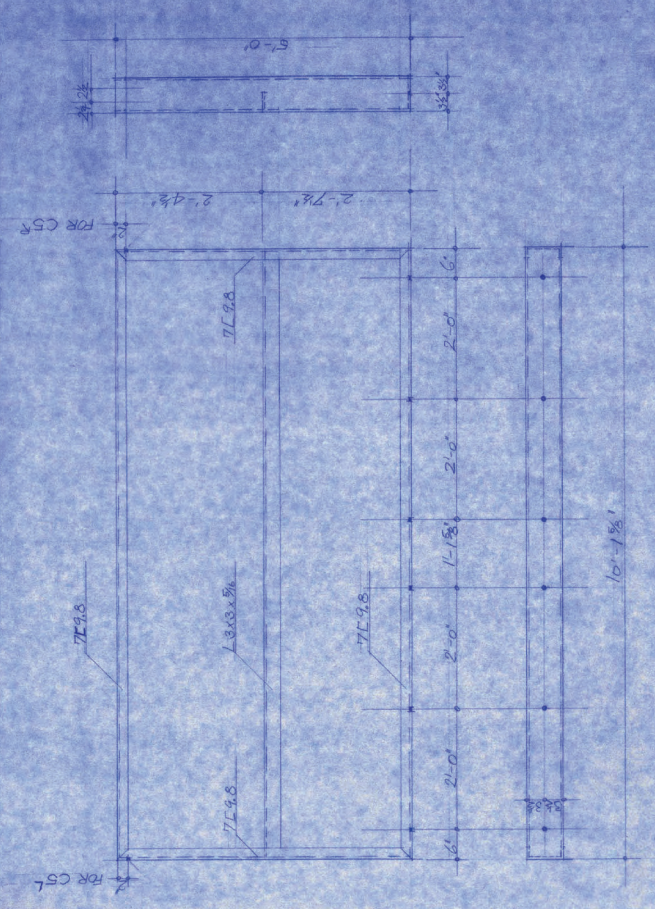
REQD. 2 MK. E-4  
 REQD. 2 MK. E-4K

REQD. 3 MK. A-4  
 REQD. 3 MK. A-4K

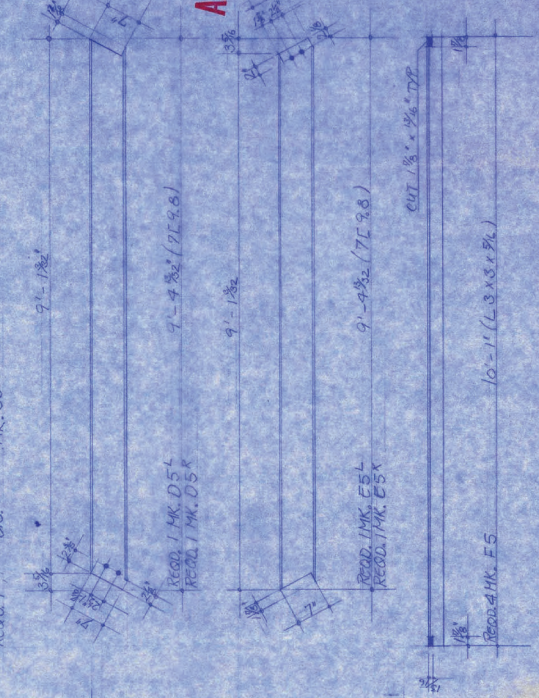
REQD. 1 MK. B-4  
 REQD. 1 MK. B-4K

REQD. 1 MK. D-4  
 REQD. 1 MK. D-4K

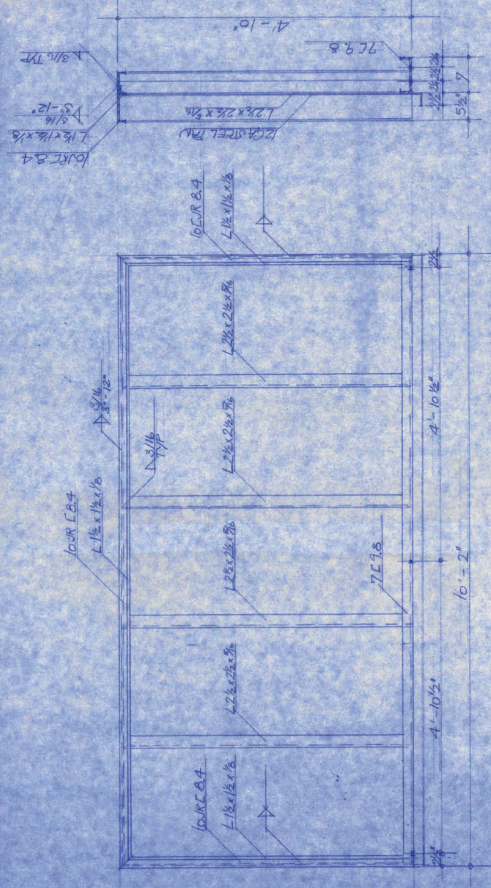
REQD. 2 MK. E-4  
 REQD. 2 MK. E-4K



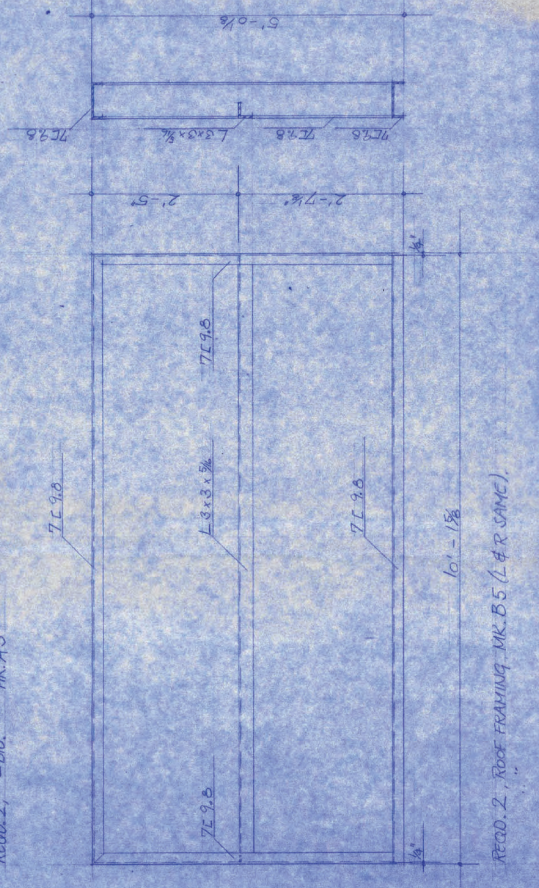
REQD. 1. ROOF FRAMING, MK.C54  
 REQD. 1. - DTD. - MK.C57



REQD. 2. ROOF FRAMING, MK.B.5 (L & R SAME).



REQD. 2. STAIR LANDING, MK.A.54  
 REQD. 2. - DTD. - MK.A.57



**APPROVED FOR FIELD USE**

HAZES & SONS ULLINID  
 PAINTS ONE SHOP COAT  
 ROAST SUEWY 678 RED FRIMCR

**TRI-STATE STEEL CO.**  
 CHEYENNE, WYOMING

MAILED, STUBOUT APARTMENTS  
 CASPAR COLLEGE

BY: [Signature]  
 T. JONES CONTRACTORS INC.  
 14 1/2 ft. 5















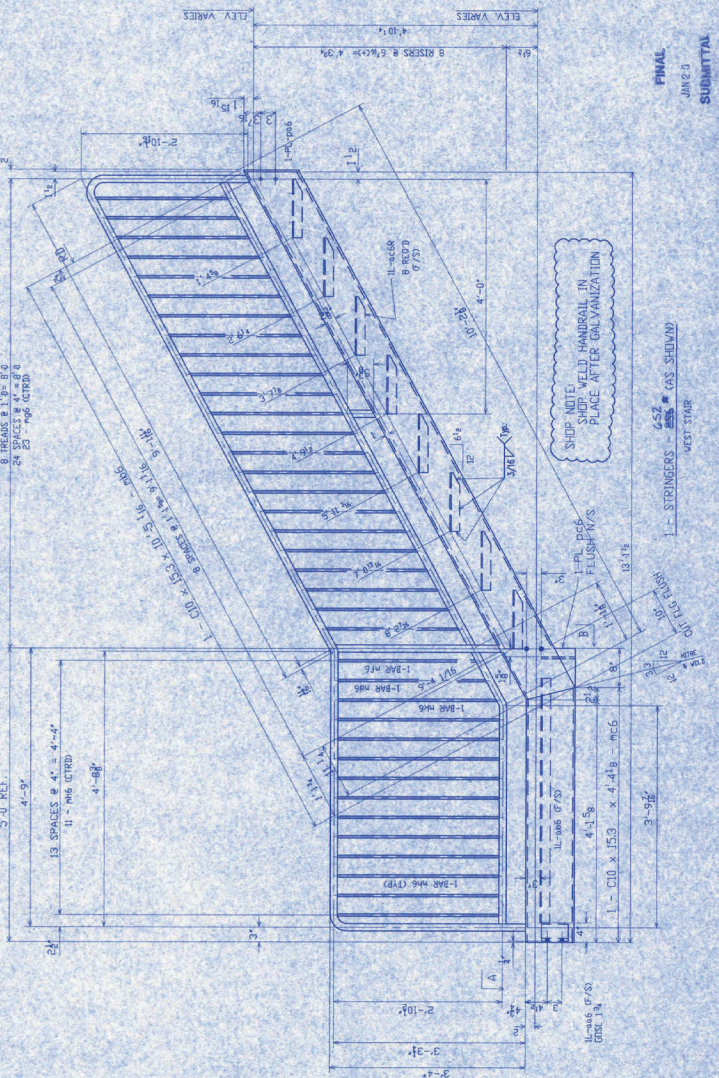
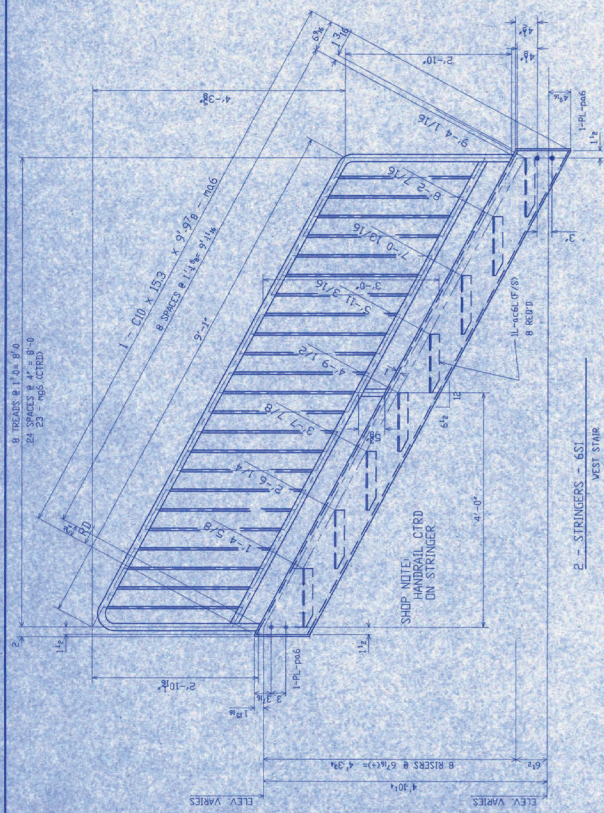
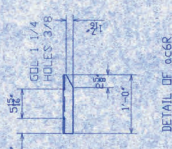
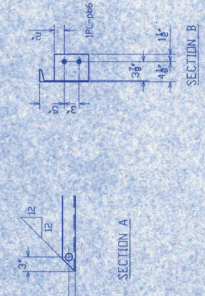
**BILL OF MATERIAL**

QUAN	MARK	DESCRIPTION	LENGTH FT.	IN.	REMARKS
2	6S1	STRINGERS	8	9 1/2	
2	6S2	CHORDS	8	9 1/2	
4	6S6	2" DIA. ROD	0	17 1/2	
46	6S6	1/2" DIA. ROD	2	5 1/2	
15	6S6	1/2" MECH. TUBING	1	0	
1	6S2	STRINGERS	10	5 1/2	
1	6S6	CHORDS	4	4 1/4	
1	6S6	1/2" DIA. ROD	0	5 1/2	
1	6S6	1/2" MECH. TUBING	1	0	
11	6S6	1/2" DIA. ROD	2	9	
1	6S6	1/2" DIA. ROD	2	8 1/2	
1	6S6	1/2" DIA. ROD	2	6 1/2	
1	6S6	1/2" DIA. ROD	2	4 1/2	
8	6S6	1/2" MECH. TUBING	1	0	
1	6S6	1/2" MECH. TUBING	1	0	

PAIN	GALVANIZE				
UNIFORM	70S UNLIMITED				
ELECTRODES	EM-1				
BUILT SCALE	1/4" = 1'-0"				
DATE	JUN 23 1999				
BY	LEGACY				

PEPPER TANK & CONT  
CASPER WY

OWNER: CUSTOMER LEGACY  
BILL NO: 10-999 STRUCTURE: CASPER COLLECT  
DATE: JUN 23 1999 SHEET NO: 5



FINAL  
JUN 23  
SUBMITTA





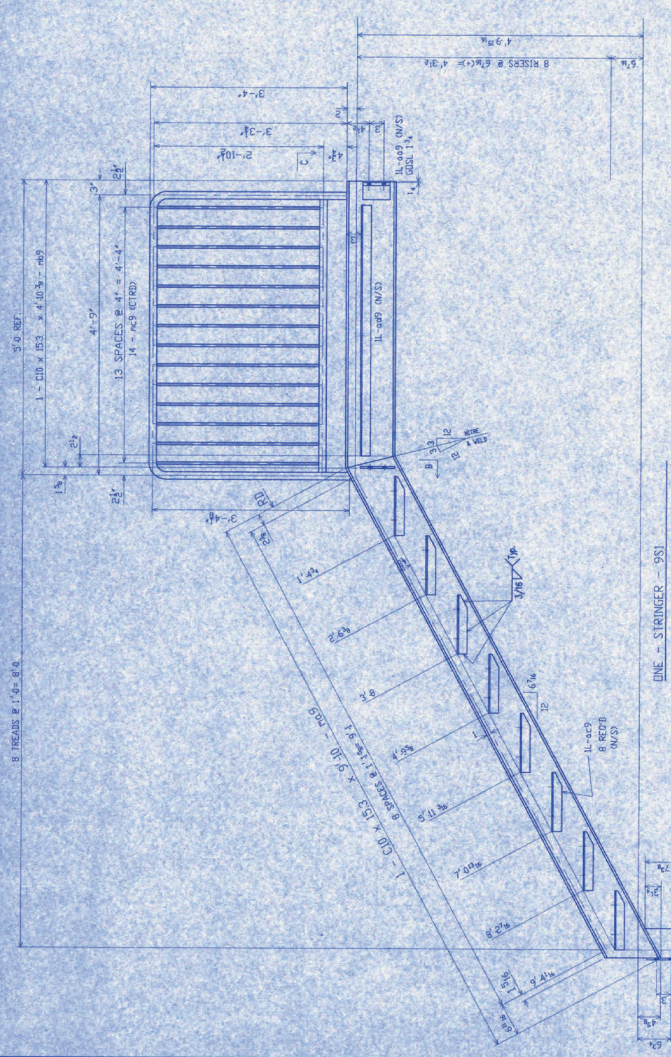
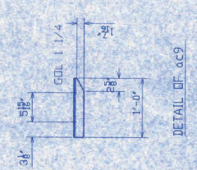
**BILL OF MATERIAL**

QUAN	MARK	DESCRIPTION	LENGTH FT	REMARKS
1	951	STRINGER		
1	952	CONCRETE	9	10"
1	953	CONCRETE	4	10"
1	954	CONCRETE	0	5"
1	955	CONCRETE	4	3"
1	956	CONCRETE	0	7"
1	957	CONCRETE	0	7"
14	958	1/2" DIA. ROD	12	9
14	959	1/2" DIA. ROD	12	9
8	960	1/2" DIA. ROD	12	9

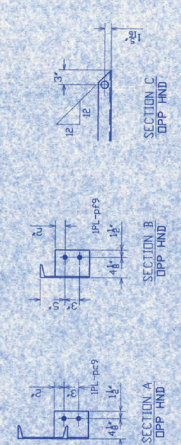
PAINT	GALVANIZE		
MATERIAL	AS5 UNPAINTED		
WELDS	7/8 UNPAINTED		
ELECTRICAL	7/8 UNPAINTED		
PLUM	7/8 UNPAINTED		
MECH	7/8 UNPAINTED		
REVISIONS			

PEPPER TANK & CINT  
CASPER WY

OWNER	CUSTOMER	LEGACY	DATE
DESIGN	STRUCTURE	CASPER COLLEGE	DATE
DRAWN			



SHOP NOTE:  
WELD HANDRAIL IN  
PLACE AFTER GALVANIZATION  
STRINGERS ARE TIED TOWARD  
YOU IN THESE PICTURES



**FINAL**  
JUN 20 2009  
SUBMITTAL





