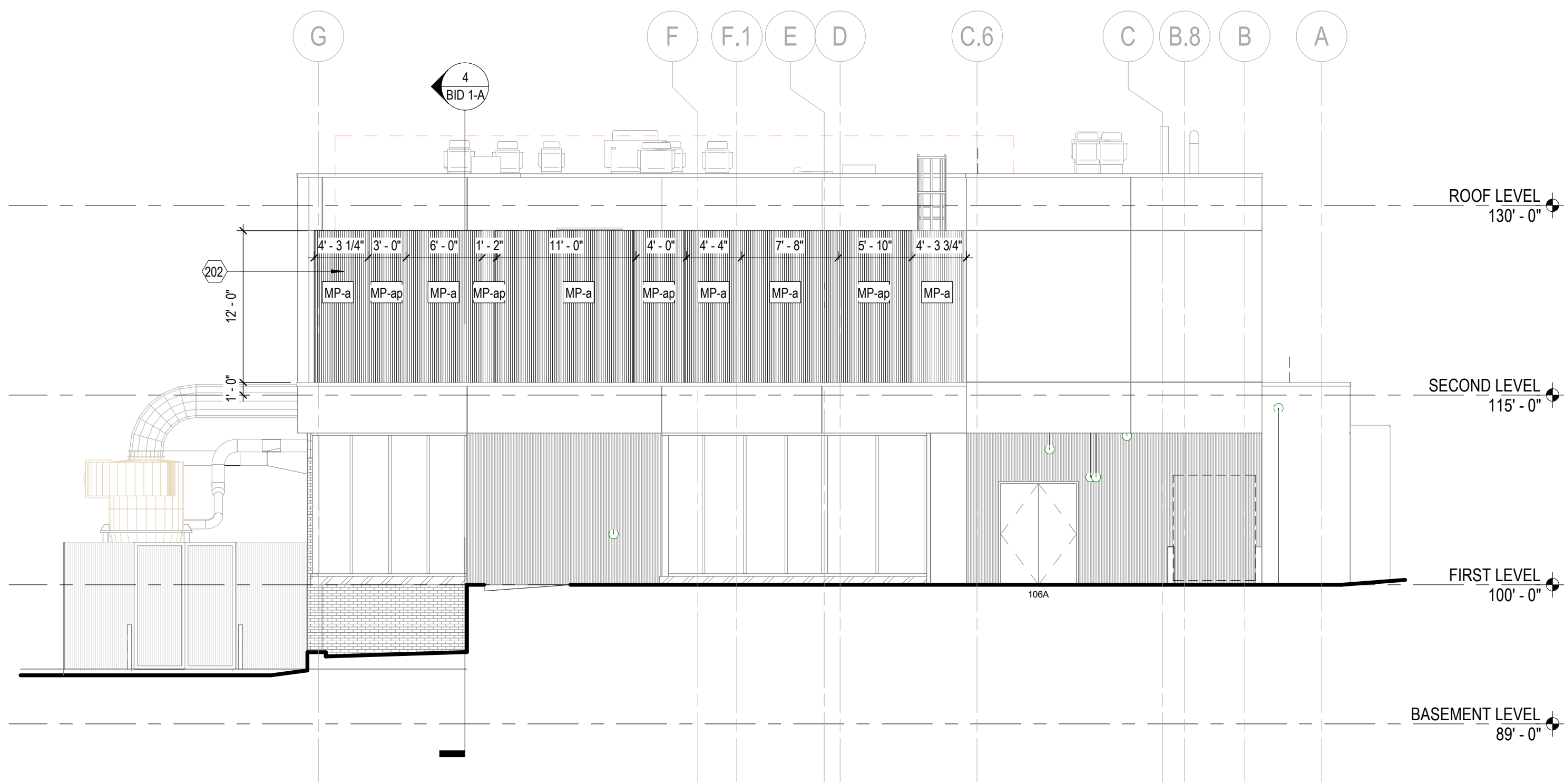
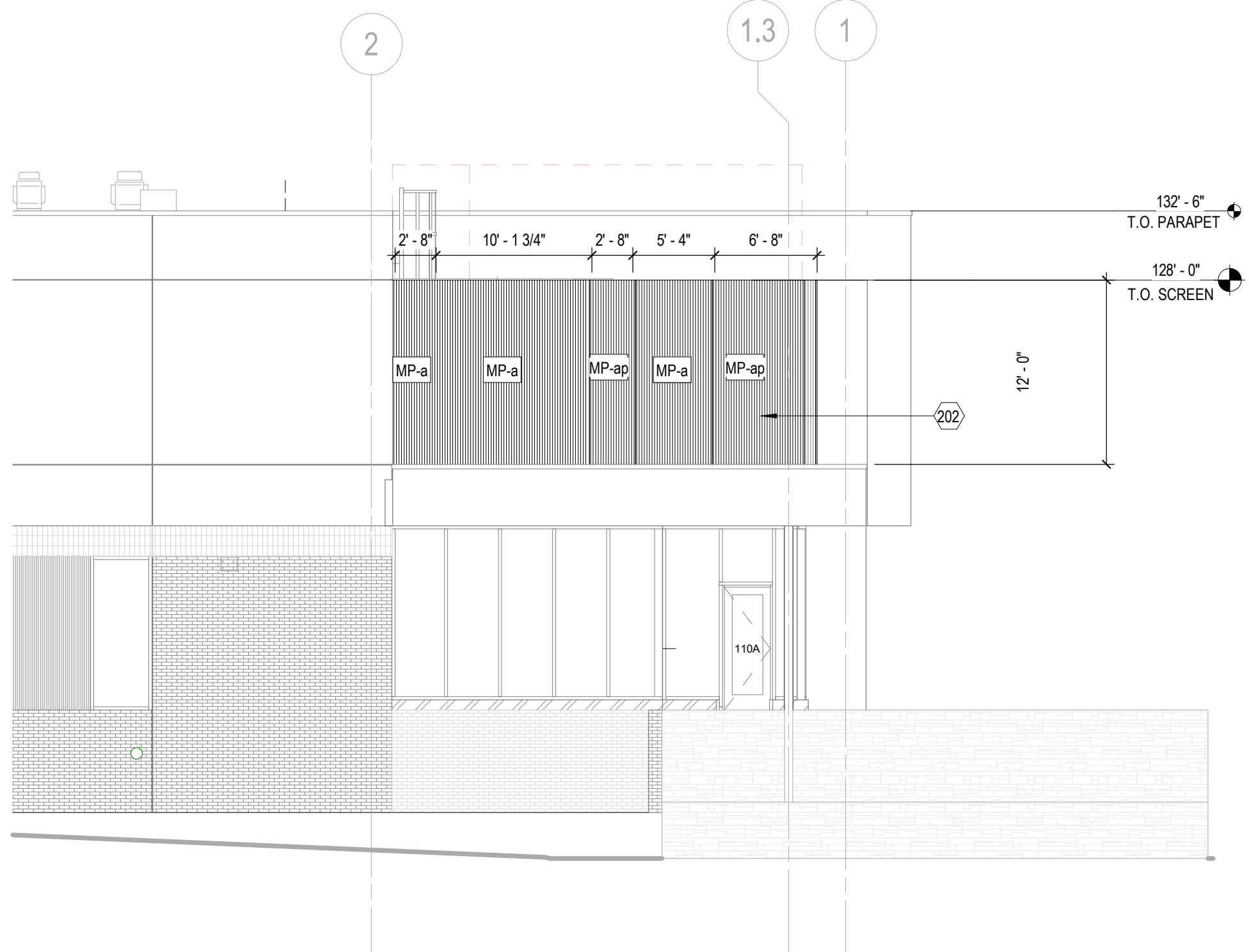


REVISION	DATE
BID PACKAGES	
Project Number	24108.00
Date	08.30.24
Drawn By	Author
Checked By	Checker
Copyright:	
ALL DRAWN AND WRITTEN INFORMATION APPEARING HEREIN SHALL NOT BE DUPLICATED, DISCLOSED OR OTHERWISE USED WITHOUT THE WRITTEN CONSENT OF MOA ARCHITECTURE	

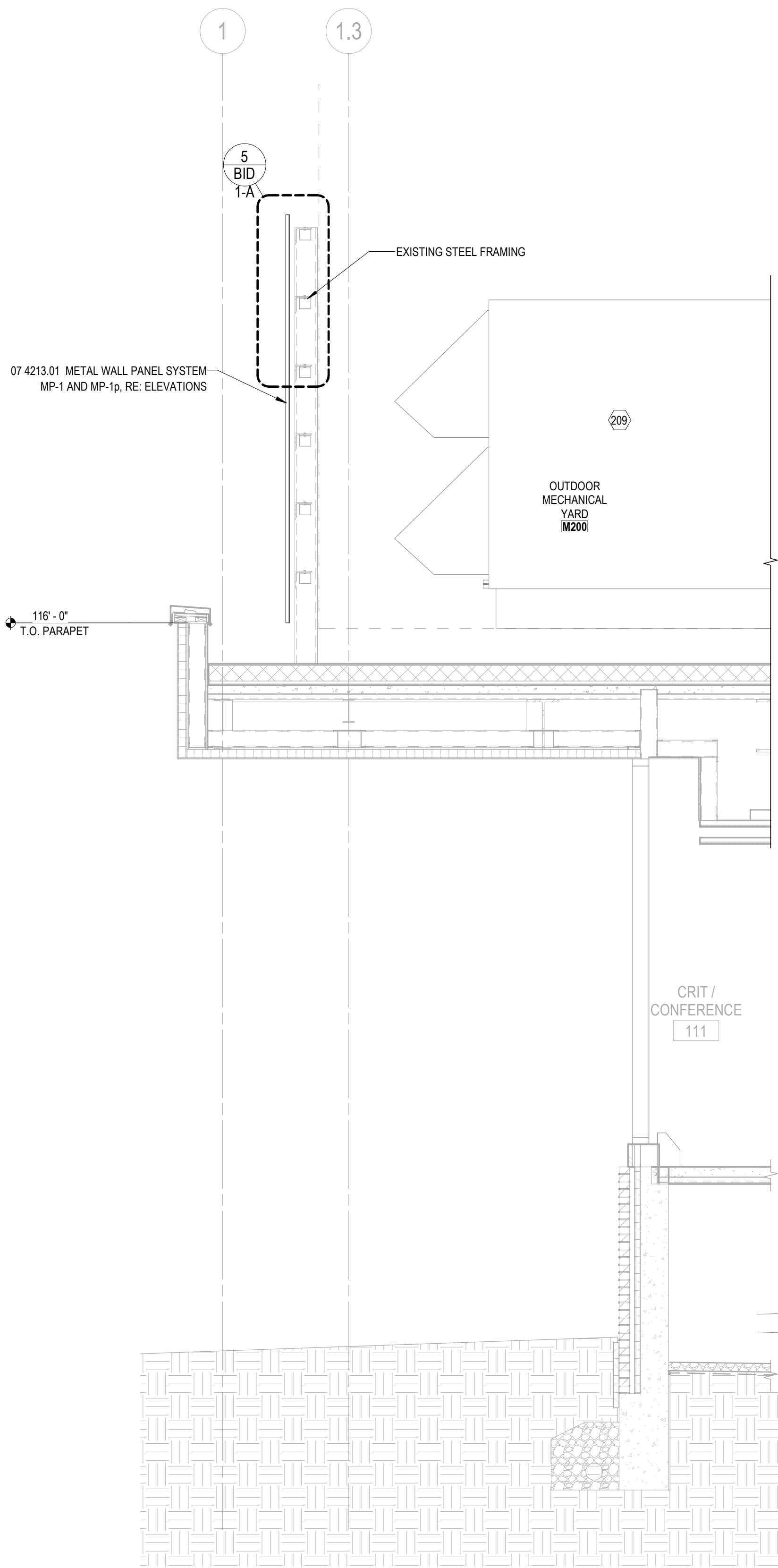
Sheet Name
PANELS AROUND
RTU



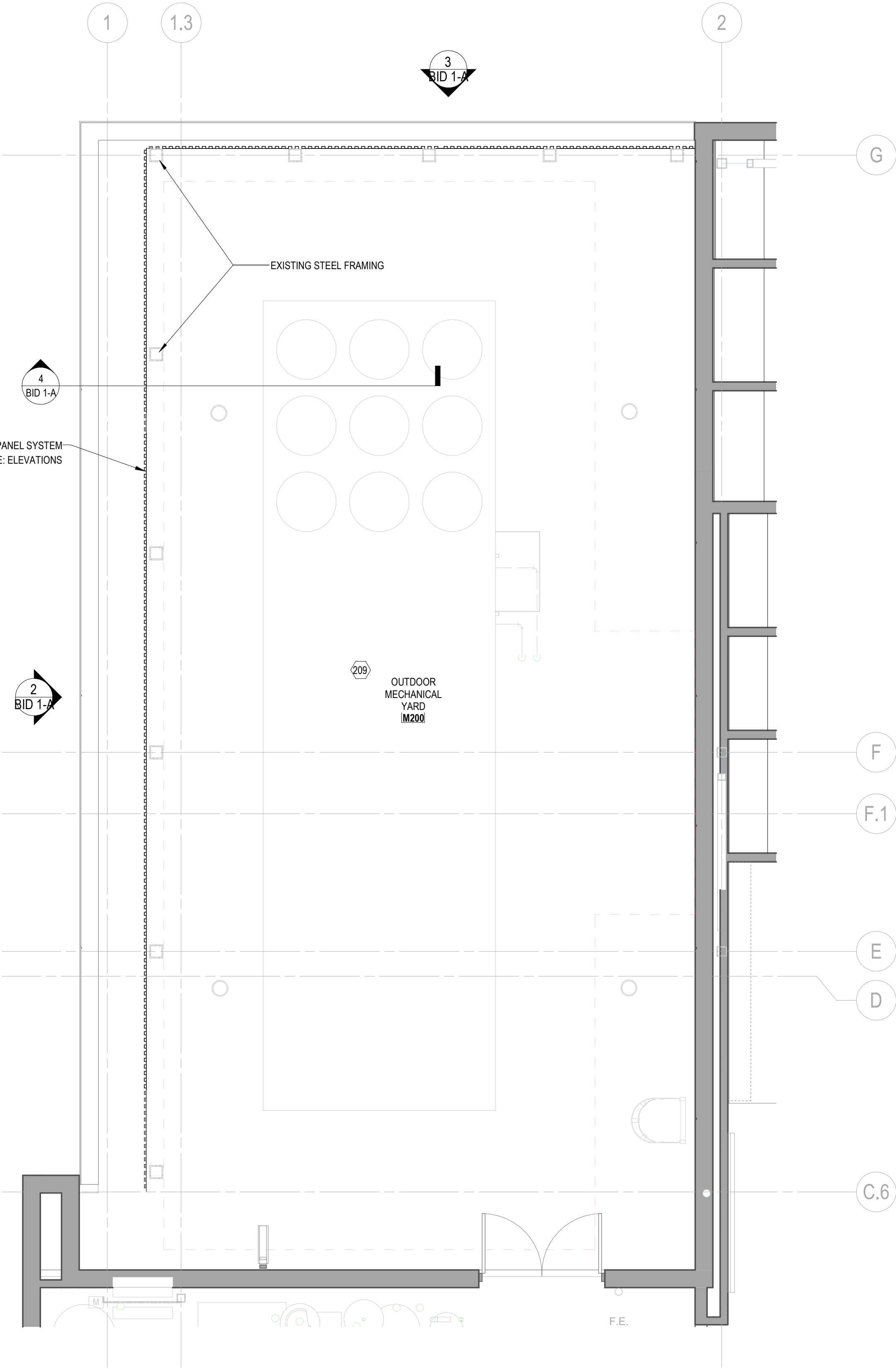
2 WEST ELEVATION - MECHANICAL YARD SCREEN PANELS
1/8" = 1'-0"



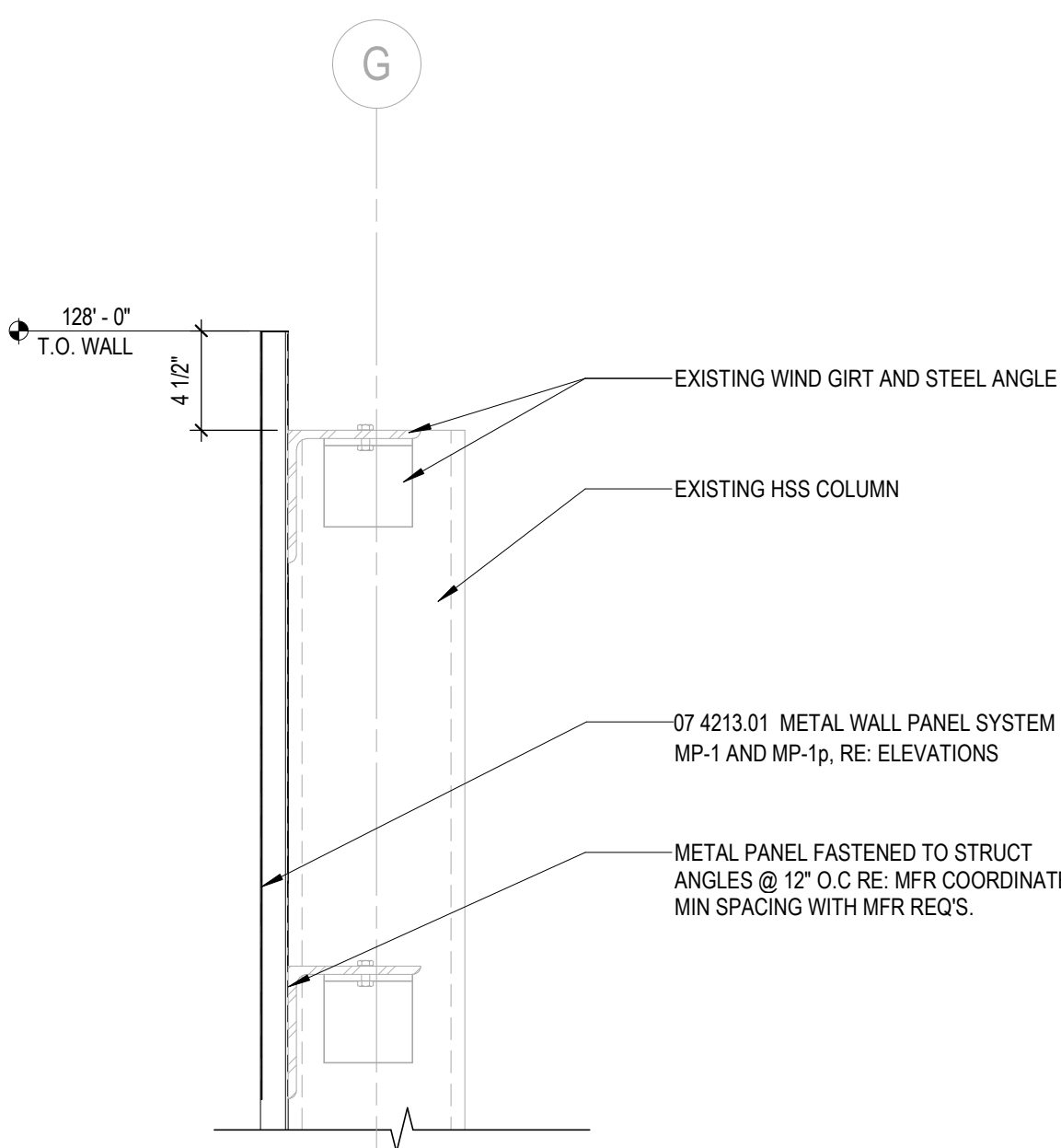
3 NORTH ELEVATION - MECHANICAL YARD SCREEN PANELS
1/8" = 1'-0"



4 MECHANICAL YARD OVERHANG - SCREEN PANELS
3/8" = 1'-0"



1 OUTDOOR MECHANICAL YARD - SCREEN PANELS
1/4" = 1'-0"



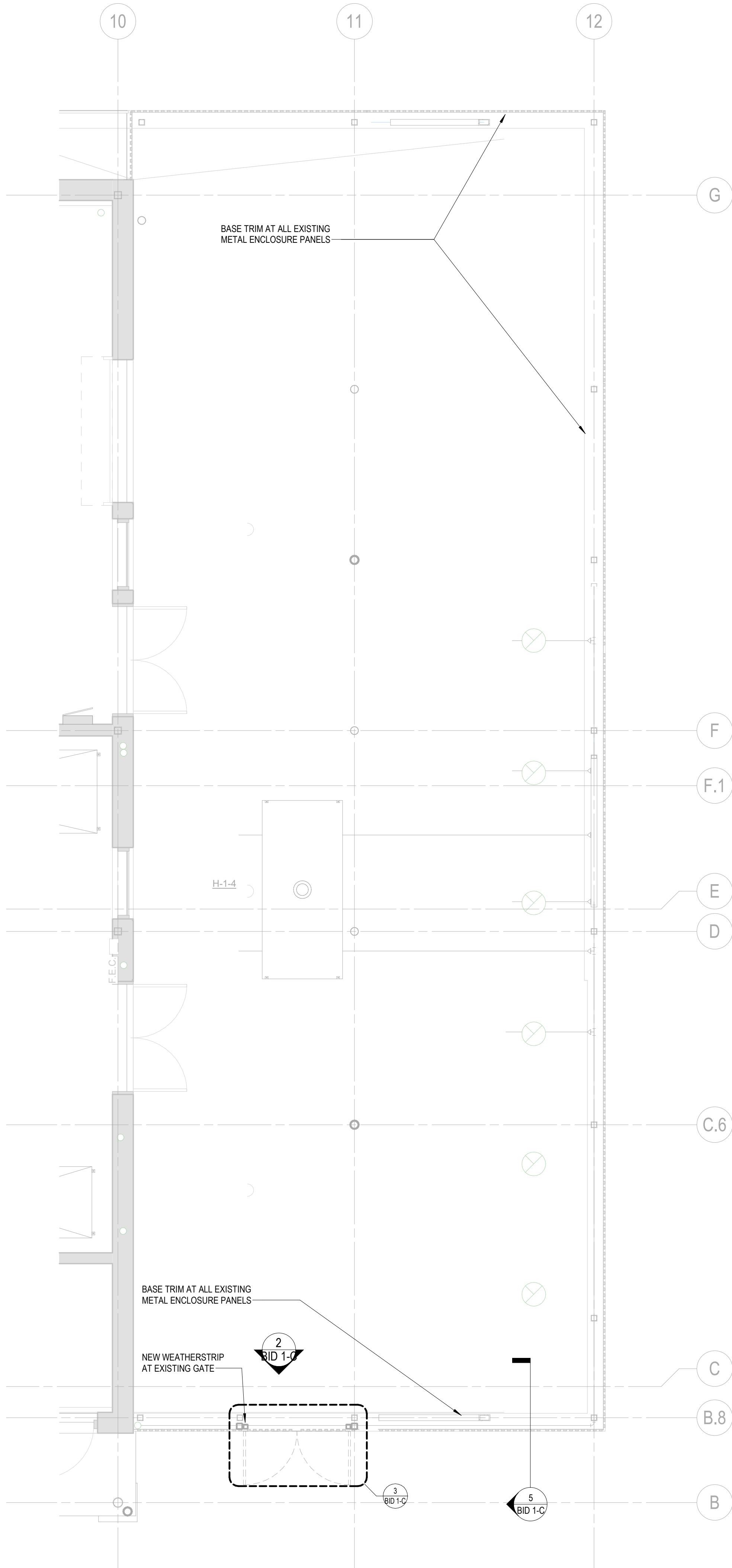
5 MECHANICAL YARD SCREEN PANEL ATTACHMENT DETAIL
1 1/2" = 1'-0"

125 COLLEGE DRIVE
CASPER, WY 82601

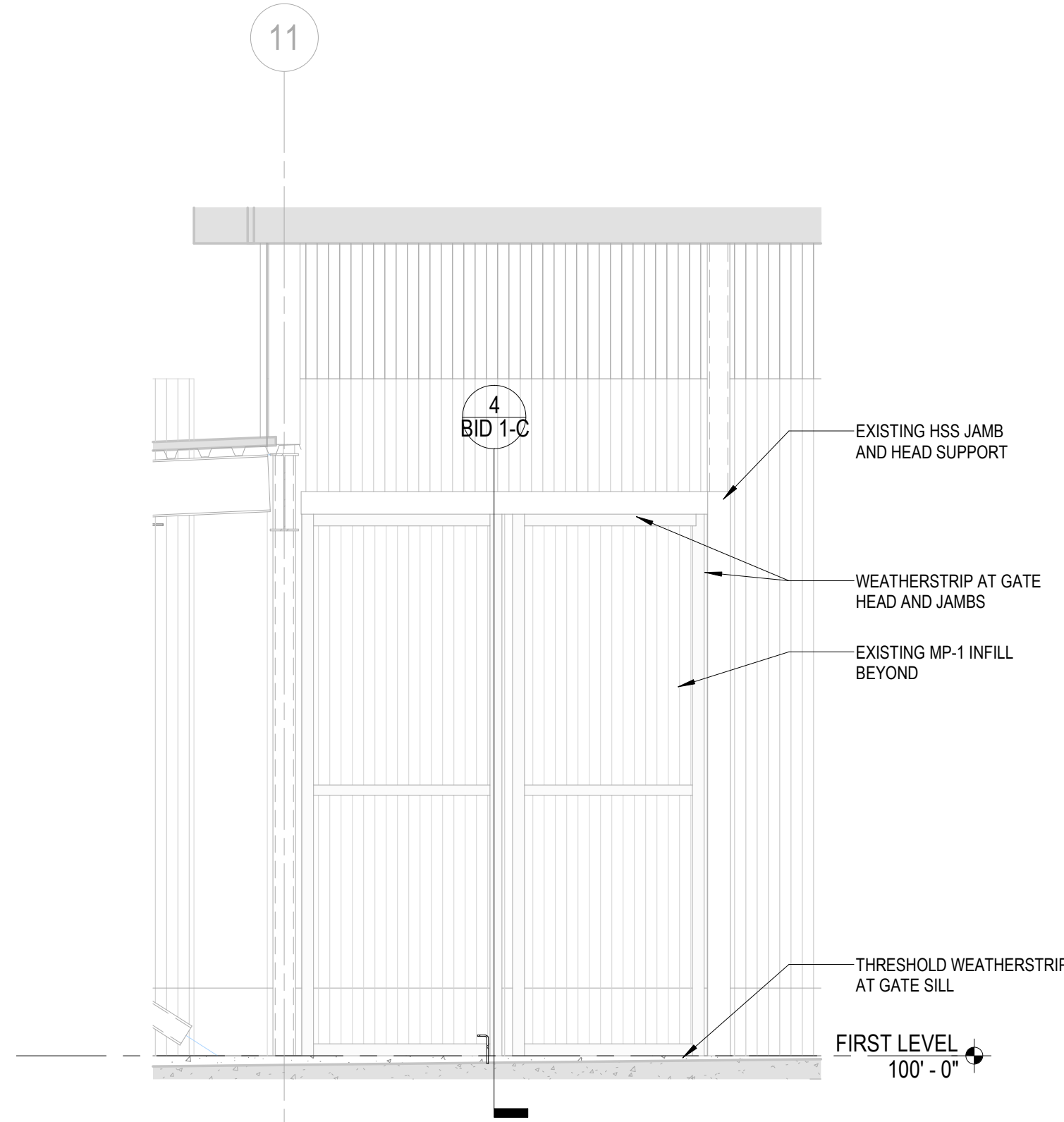


REVISION	DATE
BID PACKAGES	
Project Number	24108.00
Date	08.30.24
Drawn By	Author
Checked By	Checker
Copyright: ALL DRAWN AND WRITTEN INFORMATION APPEARING HEREIN SHALL NOT BE DUPLICATED, DISCLOSED OR OTHERWISE USED WITHOUT THE WRITTEN CONSENT OF MOA ARCHITECTURE	

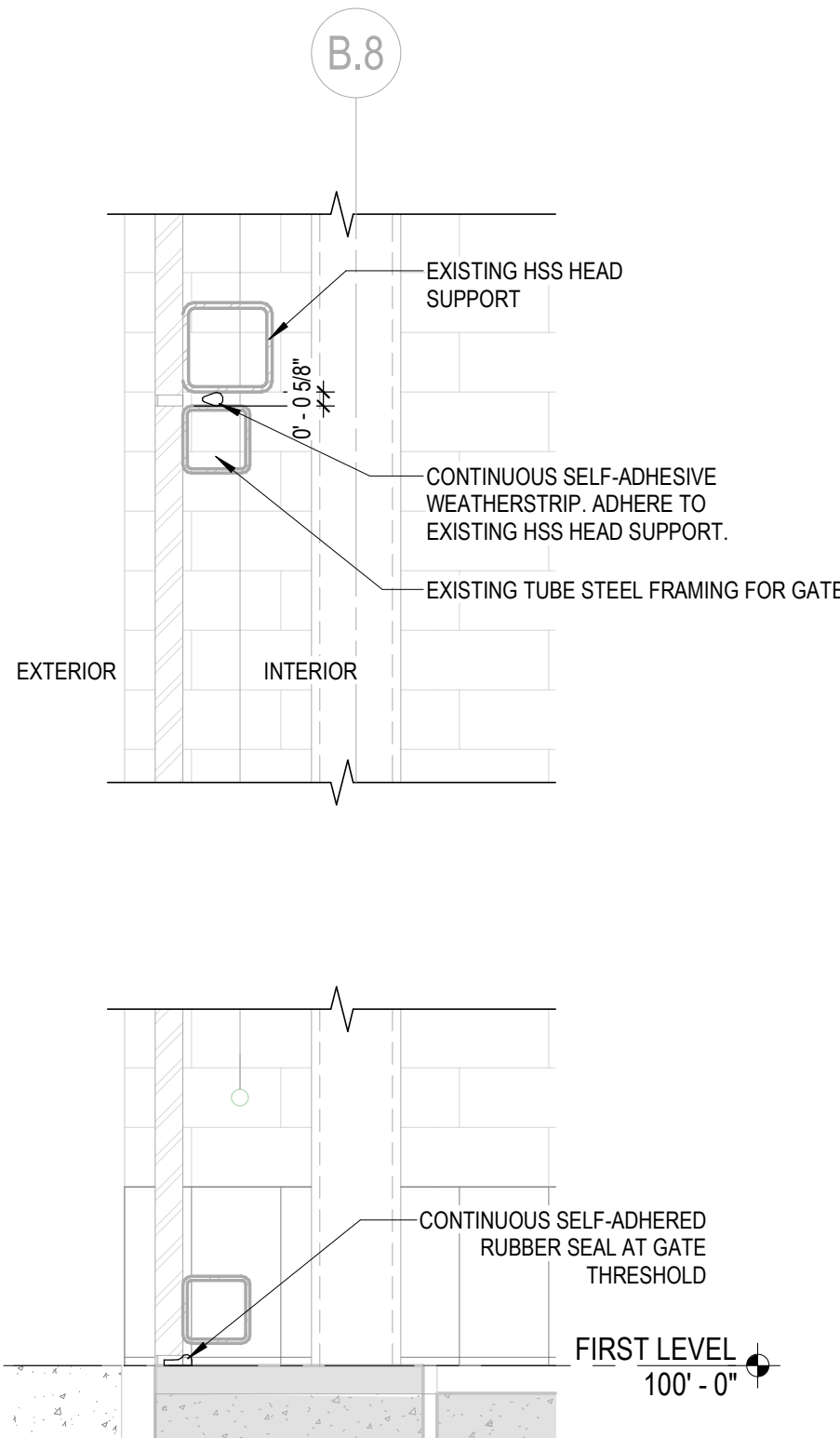
Sheet Name
KILN YARD BASE
AND GATE
WEATHERSTRIP



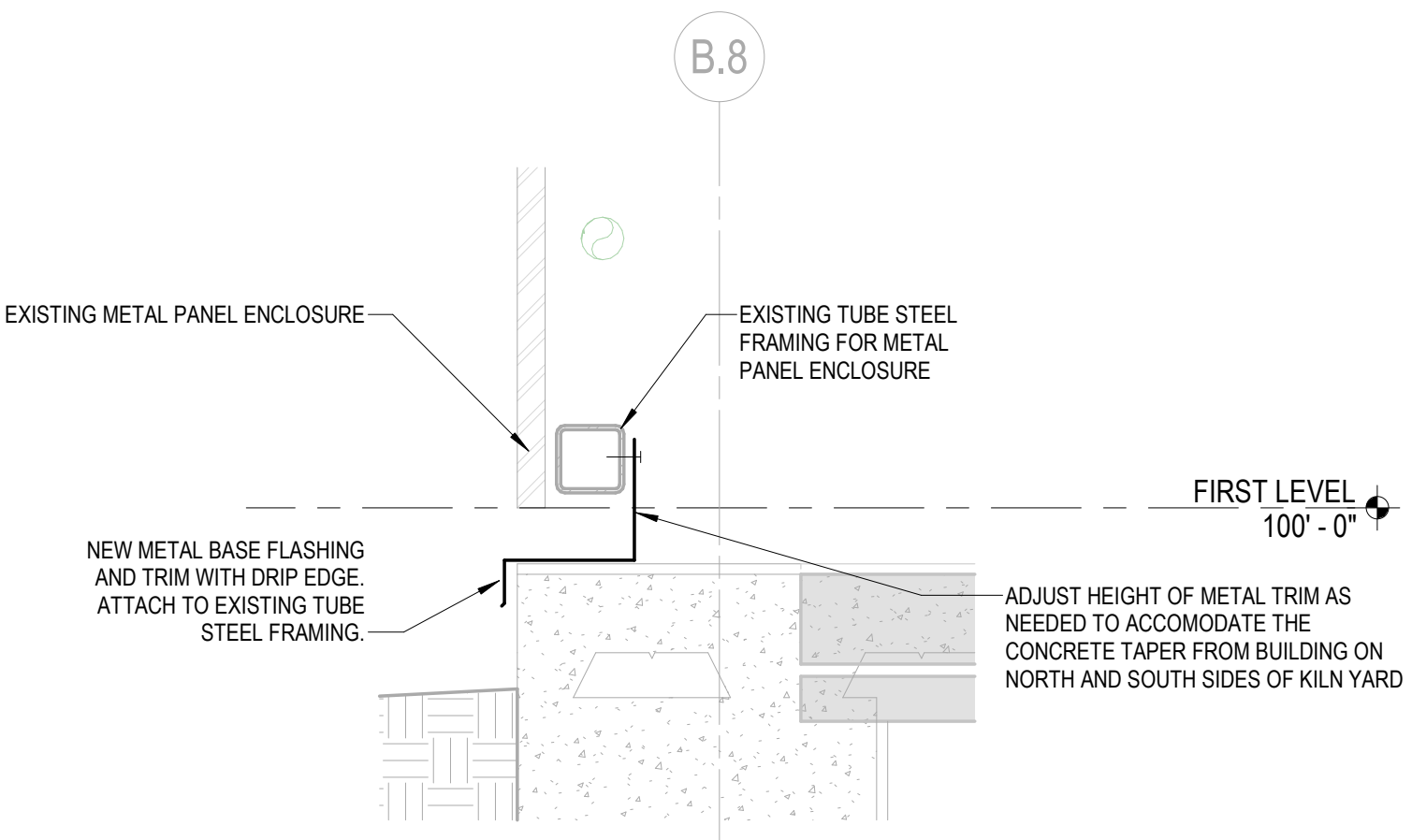
1 KILN YARD PLAN - BASE TRIM AND GATE WEATHERSTRIP
1/4" = 1'-0"



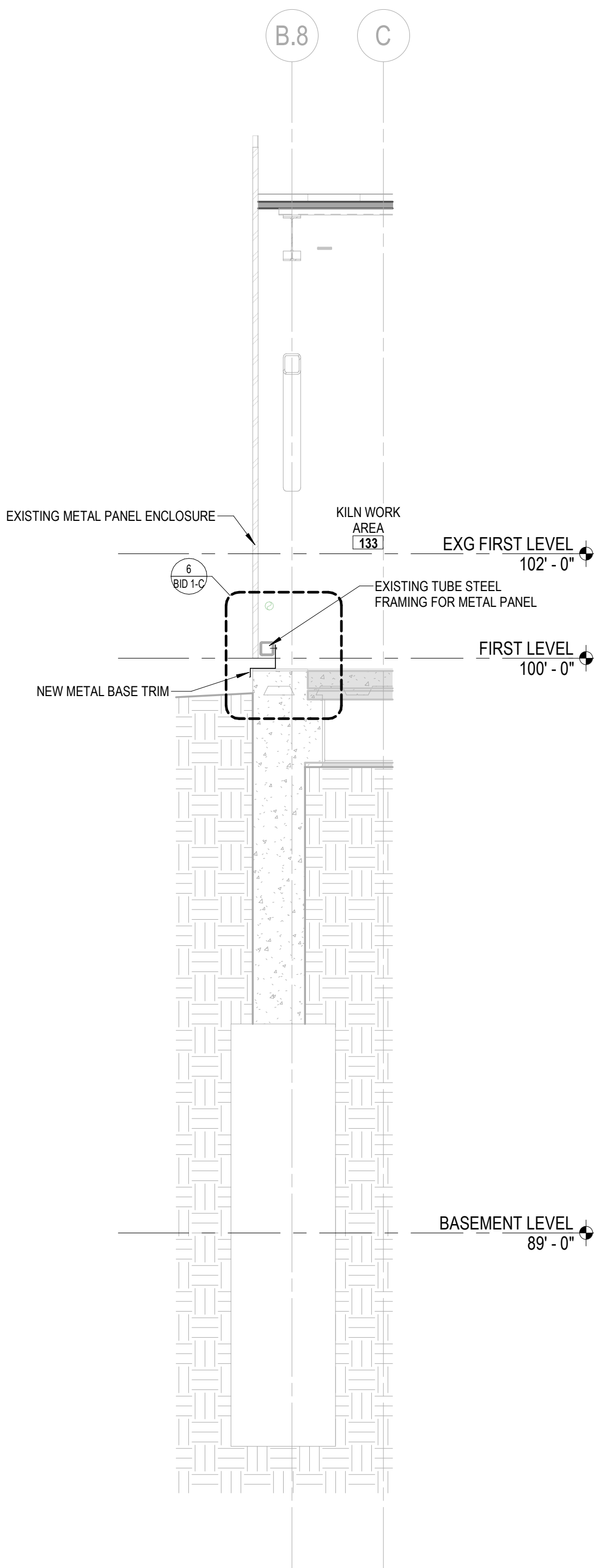
2 KILN YARD GATE ELEVATION - NEW WEATHERSTRIP
1/2" = 1'-0"



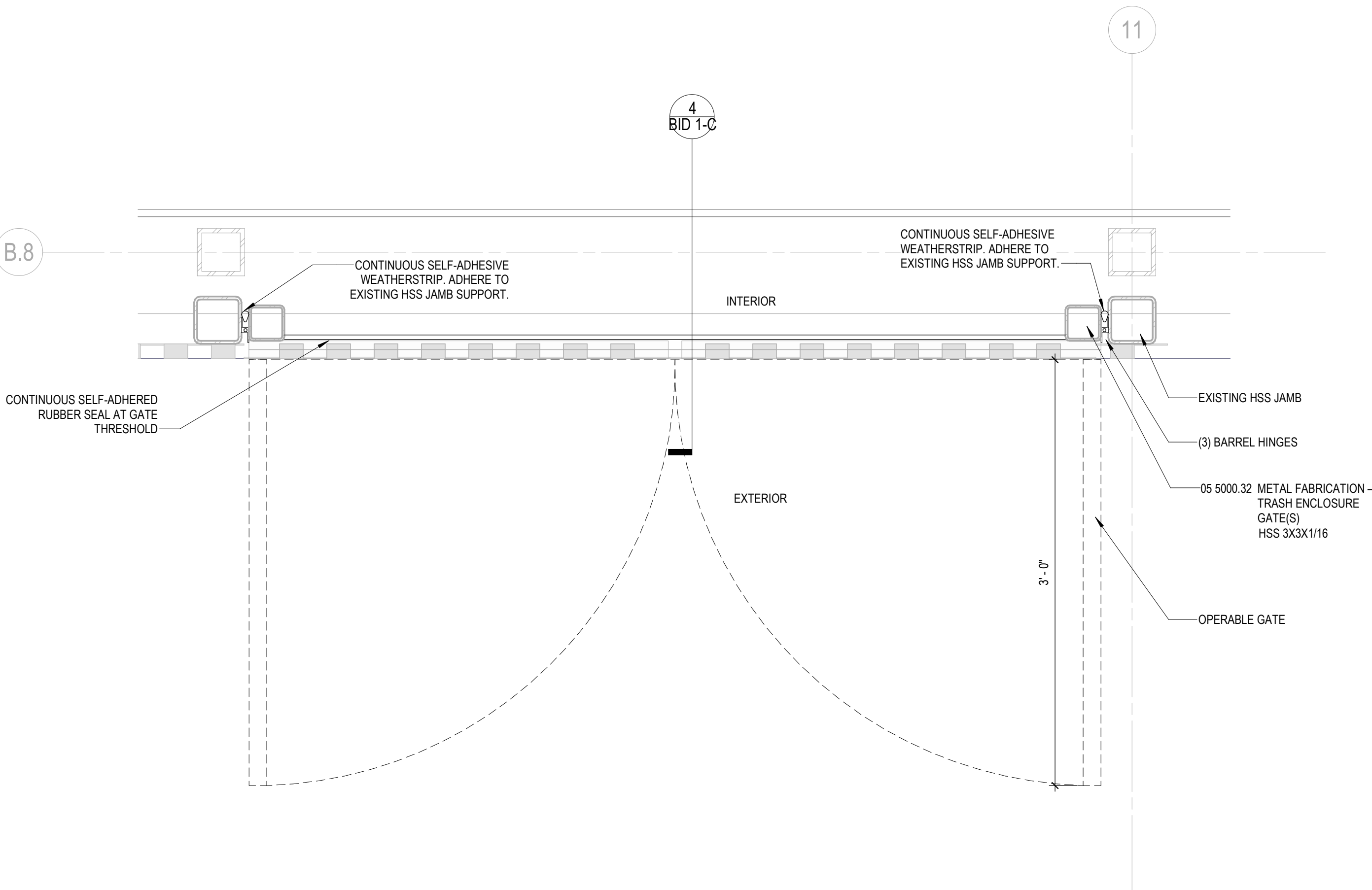
4 KILN YARD GATE HEAD AND SILL - NEW WEATHERSTRIP
1 1/2" = 1'-0"



6 KILN YARD ENCLOSURE BASE DETAIL
1 1/2" = 1'-0"



5 KILN YARD ENCLOSURE SECTION
1/2" = 1'-0"



3 KILN YARD GATE PLAN - NEW WEATHERSTRIP
1 1/2" = 1'-0"

SHEET KEYNOTES

NUMBERING IS GROUPED BY TYPE / PHASE OF WORKSHEET OF NON-ARCHITECTURAL ITEMS OR INFORMATIONAL / INSTRUCTIONAL NOTATION. SOME NUMBERS MAY BE SKIPPED ON ANY GIVEN DRAWING SHEET.

- 212 PROVIDE SPLASH BLOCK AT DOWNSPOUT PENETRATIONS; TRIM OUT PENETRATIONS TO MATCH SURROUNDING METAL TRIM.
213 PROVIDE DOWNSPOUT BETWEEN EXISTING SCREEN WALL AND EXISTING STRUCTURE; SEE DETAIL 3. COORDINATE LOCATION OF DOWNSPOUTS AND PENETRATIONS WITH EXISTING KILN YARD EQUIPMENT.



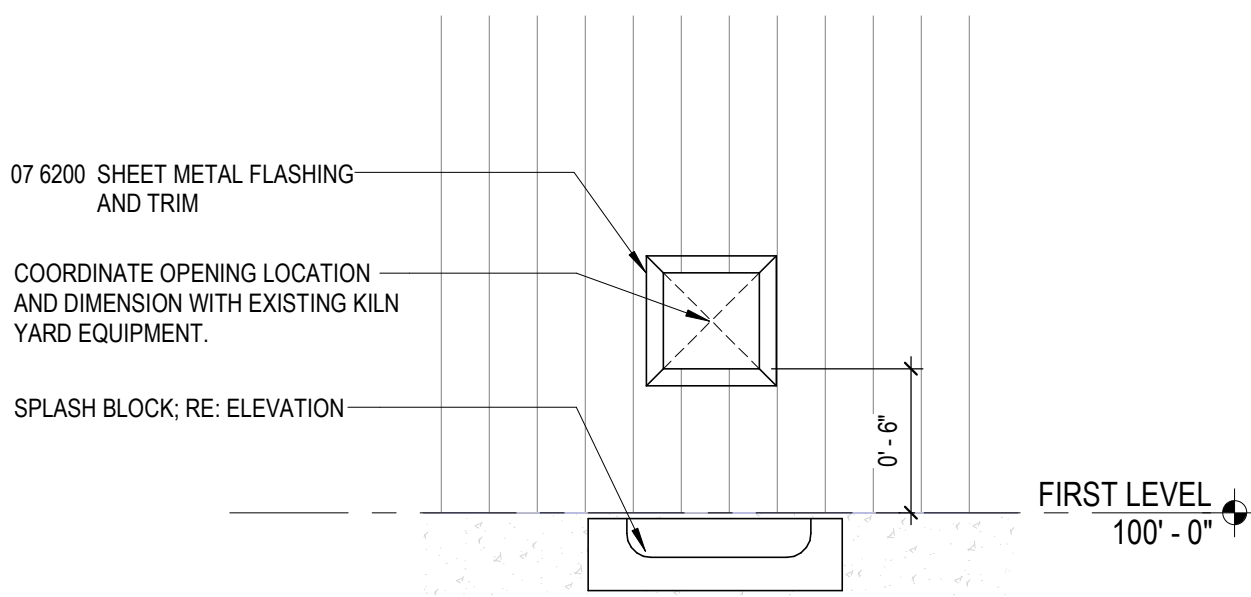
MOA ARCHITECTURE
WYOMING | COLORADO
302 SOUTH DAVID STREET, SUITE 210
CASPER, WYOMING 82401
307.268.9890
moaarch.com

HGA

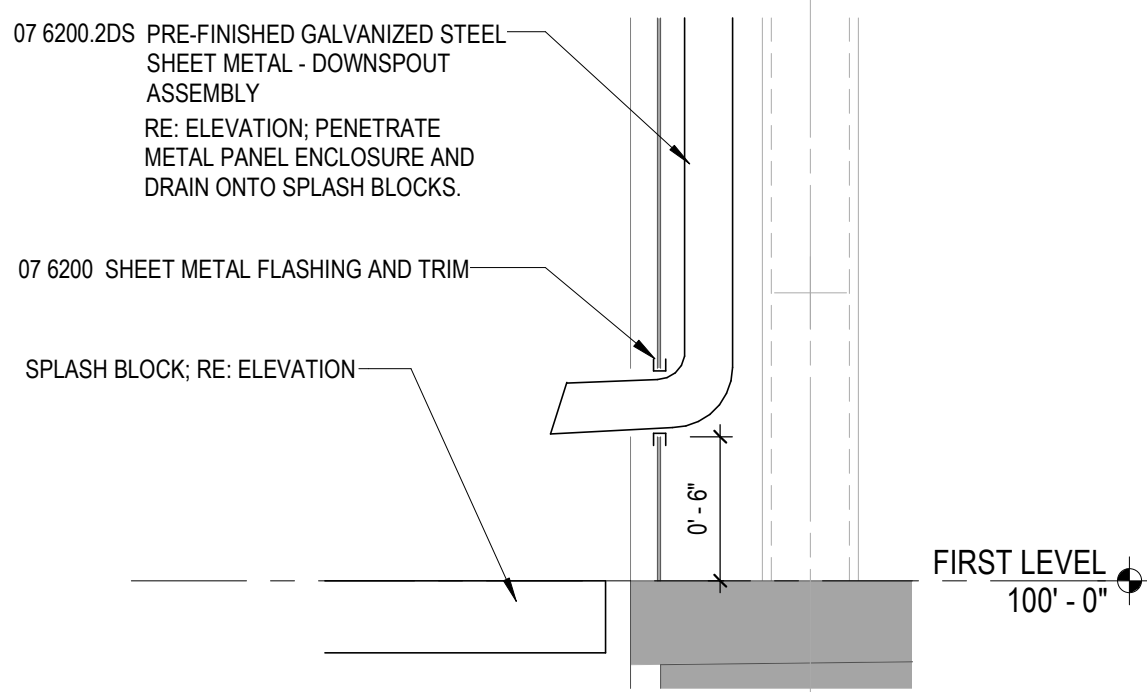
420 North 5th Street, Suite 100
Minneapolis, Minnesota 55401
Telephone 612.758.4000

CASPER COLLEGE VISUAL ARTS MISC. PROJECTS

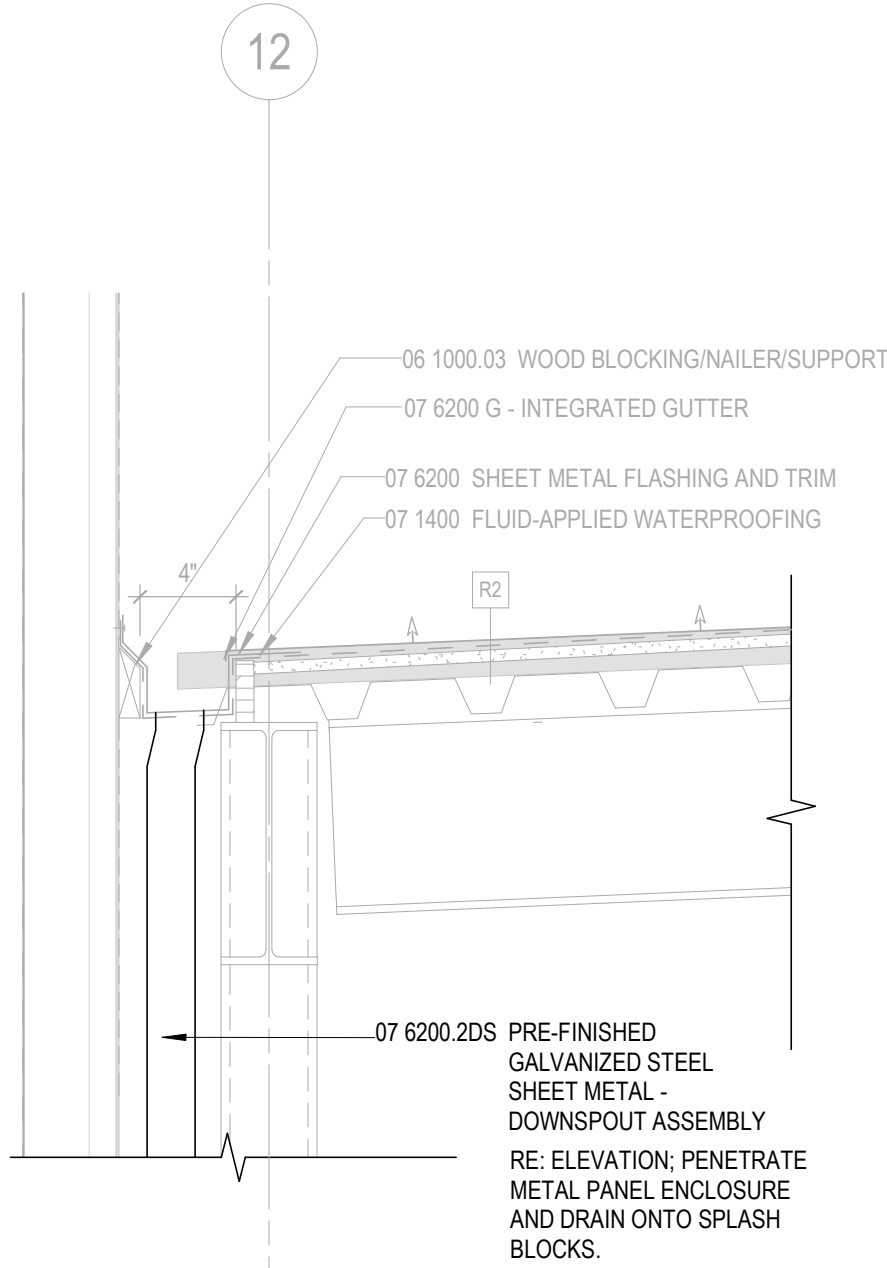
125 COLLEGE DRIVE
CASPER, WY 82601



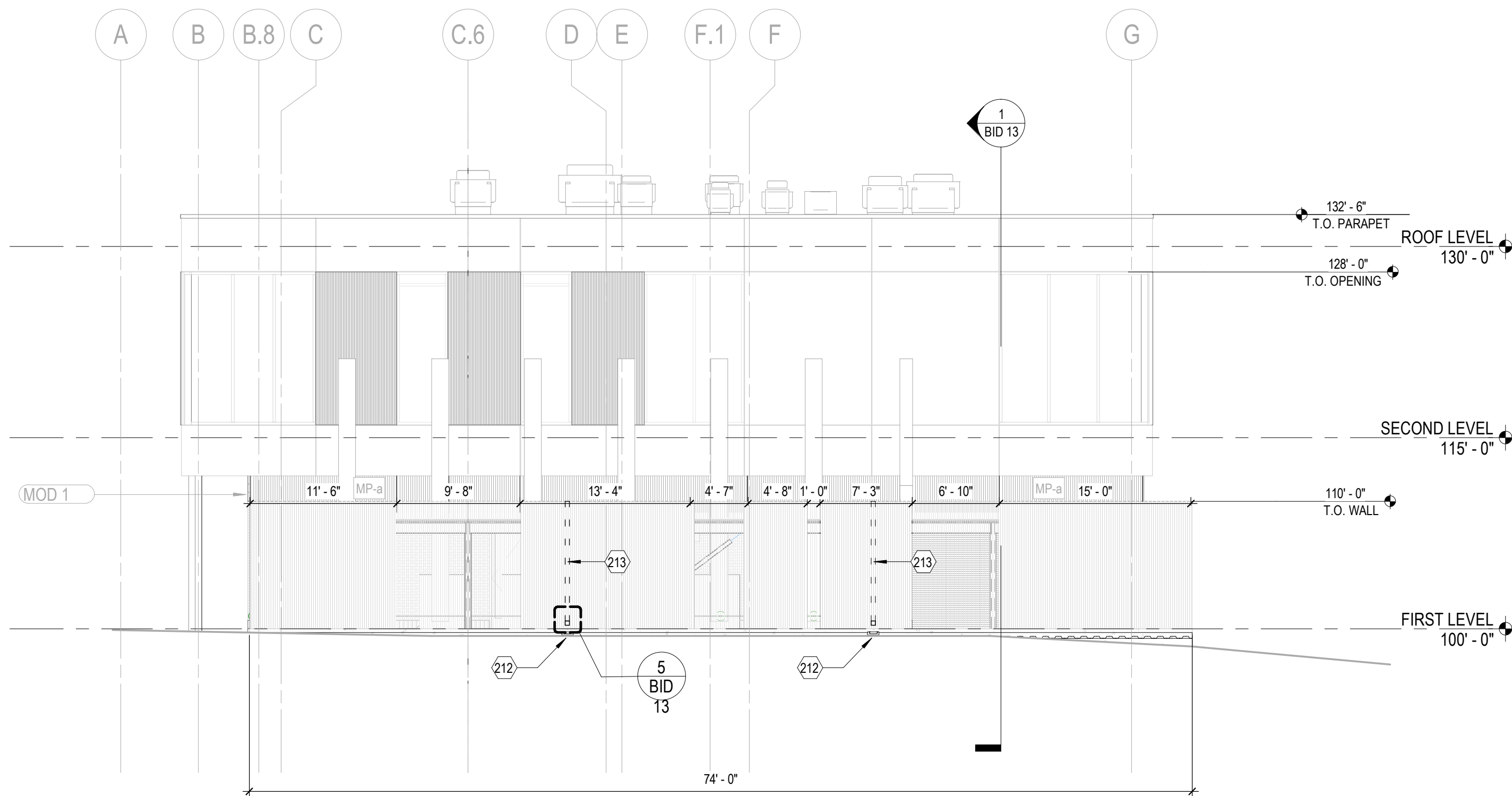
5 INTEGRATED DOWNSPOUT PENETRATION BID 13
1 1/2" = 1'-0"



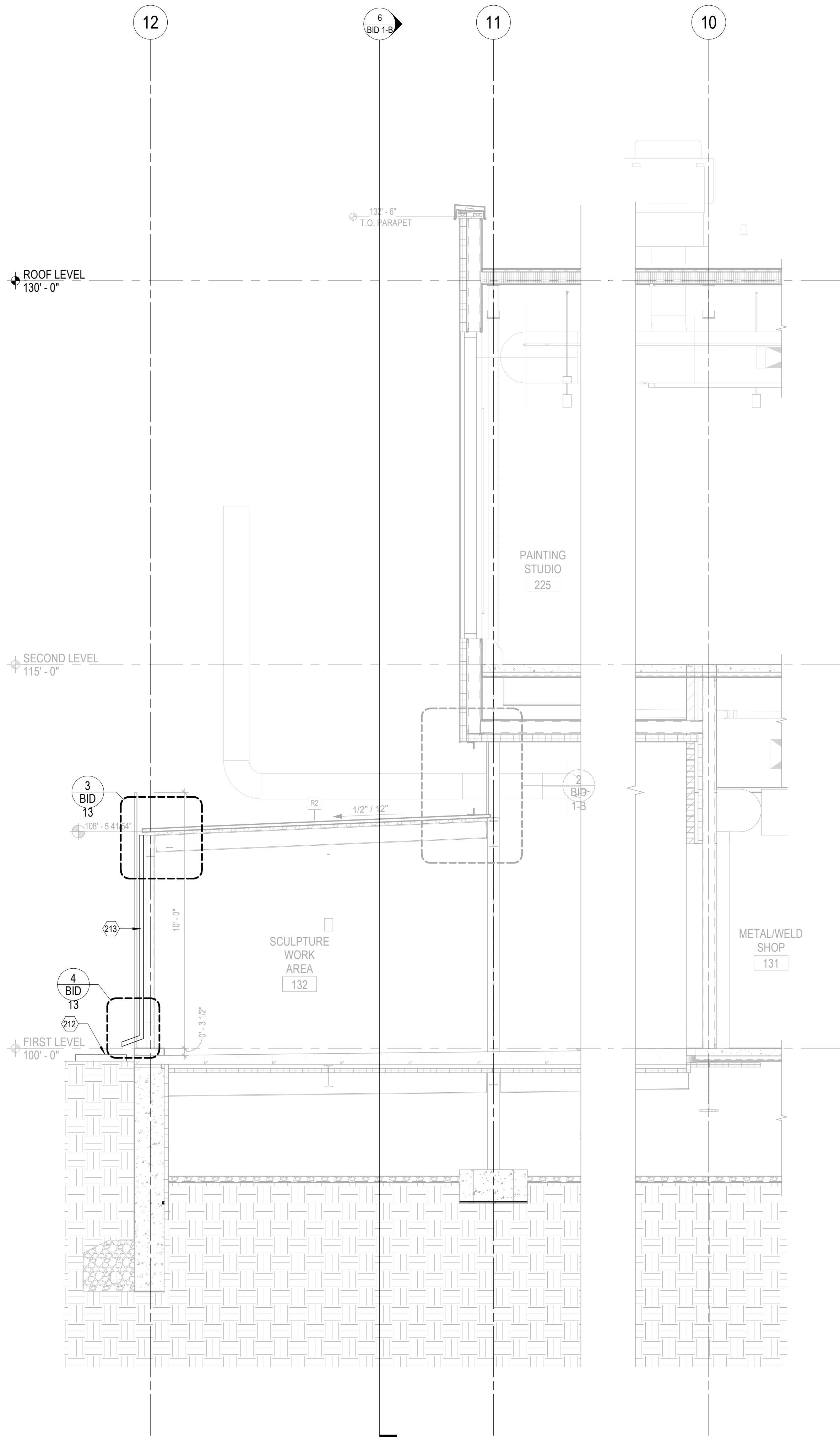
4 INTEGRATED DOWNSPOUT AT METAL PANEL BID 13
1 1/2" = 1'-0"



3 INTERGRATED GUTTER AT R2 BID 13
1 1/2" = 1'-0"



2 EAST (KILN YARD) BID 13
1/8" = 1'-0"



1 WALL SECTION THRU EAST OVERHANG & KILN YARD BID 13
3/8" = 1'-0"

REVISION	DATE
BID PACKAGES	
Project Number	24108.00
Date	06.13.25
Drawn By	Author
Checked By	Checker
Copyright:	
ALL DRAWN AND WRITTEN INFORMATION APPEARING HEREIN SHALL NOT BE DUPLICATED, DISCLOSED OR OTHERWISE USED WITHOUT THE WRITTEN CONSENT OF MOA ARCHITECTURE	
Sheet Name	
DOWNSPOUTS	

BID 13