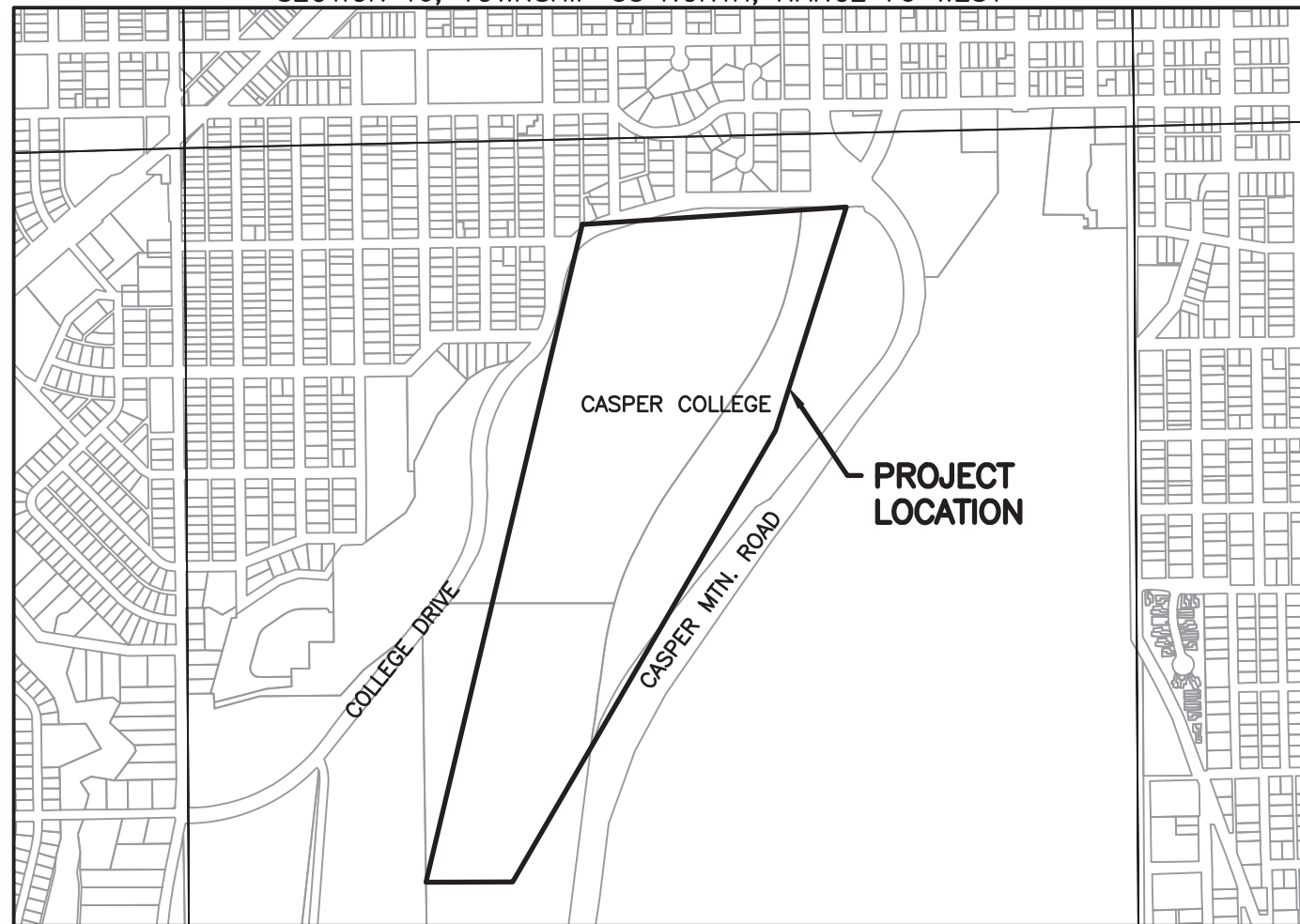


CONSTRUCTION PLANS FOR CASPER COLLEGE 2024 ADA AND DRAINAGE CONCRETE REPLACEMENT CASPER, WY

SECTION 16, TOWNSHIP 33 NORTH, RANGE 79 WEST



LOCATION & VICINITY MAP
SCALE: 1"=1000'

<u>LEGEND</u>	
	EX CURB INLET
	EX BUILDING
	EX RETAINING WALL
	EX EDGE ASPHALT
	EX EDGE CONCRETE
	EX TBC
	PROPOSED EDGE ASPHALT
	PROPOSED EDGE CONCRETE
	PROPOSED TBC
	PROPOSED CONCRETE FLOW LINE
	PROPOSED CONCRETE PAVING
	PROPOSED C&G
	PROPOSED ASPHALT PAVING
DETAIL #	DETAIL DENOTATION
SHEET #	



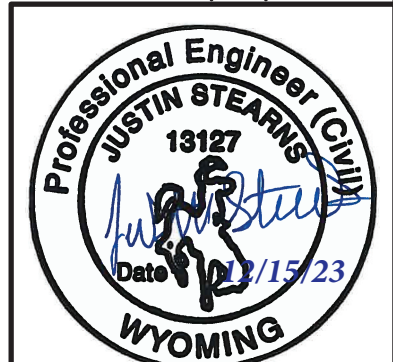
INDEX OF SHEETS

<u>SHEET NO.</u>	<u>PLANS</u>
1	COVER
2	GENERAL NOTES
3	KEY MAP
4-12	BASE BID PLANS
13	ADD ALTERNATE 1 PLAN
14-16	DETAILS
<u>16</u>	<u>TOTAL SHEETS</u>

BID SET 12/15/23



PLANS PREPARED BY WLC
PROJECT ENGINEER: JUSTIN STEARNS, PE
200 PRONGHORN ST
CASPER, WY 82601
PHONE: 307-266-2524



GENERAL NOTES

EXISTING UNDERGROUND UTILITIES

EXISTING UNDERGROUND UTILITIES MAY NOT BE SHOWN ON THE DRAWINGS. IT SHALL BE THE CONTRACTOR'S RESPONSIBILITY TO OBTAIN ACCURATE LOCATIONS OF ALL UNDERGROUND UTILITIES AND APPURTENANCES THAT COULD BE AFFECTED BY THE WORK AT LEAST THREE(3) DAYS PRIOR TO CONSTRUCTION. IF CONFLICTS ARE DISCOVERED, THE CONTRACTOR SHALL IMMEDIATELY NOTIFY THE ENGINEER AND ASSIST IN DEVELOPING A PLAN TO REMEDY THE CONFLICT. LOCATIONS MAY BE OBTAINED BY PRELIMINARY EXCAVATION OR "POTHOLING". THE ENGINEER AND OWNER SHALL NOT BE HELD ACCOUNTABLE FOR THE COMPLETENESS OR ACCURACY OF THE UTILITY LOCATIONS. THE CONTRACTOR SHALL NOTIFY THE LOCATE CALL CENTER (WYOMING ONE-CALL 1-800-849-2476) AND SHALL FIELD VERIFY THE LOCATION OF ALL UTILITIES IN THE PROJECT AREA PRIOR TO CONSTRUCTION ACTIVITIES.

MISCELLANEOUS

- (1) THE CONTRACTOR SHALL BE RESPONSIBLE FOR EROSION AND SEDIMENT CONTROL MEASURES AS NECESSARY TO COMPLY WITH FEDERAL, STATE, COUNTY, AND CITY REGULATIONS INCLUDING WYPDES THAT PROHIBIT DISCHARGE OF POLLUTANTS, INCLUDING SEDIMENTS THAT ARE A RESULT OF EROSION OR OTHER CONSTRUCTION ACTIVITIES. THE CONTRACTOR SHALL PROVIDE DUST CONTROL AND SHALL CONDUCT WORK SO THAT SEDIMENT IS NOT TRANSPORTED ONTO THE ROADWAY OR ADJACENT PROPERTY.
- (2) ALL CONCRETE SHALL HAVE MACRO FIBER REINFORCEMENT PER SPECIFICATIONS.
- (3) THE CONTRACTOR SHALL BE RESPONSIBLE FOR MAINTENANCE AND SAFETY OF HIS WORK AT ALL TIMES AND ADHERE TO OSHA STANDARDS AT ALL TIMES.
- (4) ANY DISTURBED GRASS AREAS SHALL BE REPLACED WITH SOD. PLACING OF SEED WILL NOT BE ALLOWED UNDER ANY CIRCUMSTANCE.
- (5) TAKE CARE NOT TO DISTURB ANY EXISTING IRRIGATION. ANY DISTURBED IRRIGATION HEADS OR LINES SHALL BE REPLACED BY THE CONTRACTOR.
- (6) CONTRACTOR IS RESPONSIBLE FOR INSTALLING AND MAINTAINING ALL EROSION CONTROL AND STORM WATER POLLUTION PREVENTION MEASURES DURING CONSTRUCTION.
- (7) CONTRACTOR IS RESPONSIBLE FOR PREPARING, IMPLEMENTING, AND MAINTAINING ALL TRAFFIC CONTROL PLANS AND MEASURES TO MEET ALL MUTCD STANDARDS.
- (8) ALL REMOVED MATERIALS INCLUDING CONCRETE, REBAR, ASPHALT, BASE COURSE, AND OVER EXCAVATED SUBGRADE SOILS SHALL BE HAULED OFF AND DISPOSED OF BY CONTRACTOR.
- (9) CONTRACTOR SHALL REVIEW ALL PROJECT SPECIFICATIONS.
- (10) ALL STREETS SHALL REMAIN OPEN TO ONE LANE OF TRAFFIC AT A MINIMUM THROUGHOUT CONSTRUCTION.
- (11) MATERIALS TESTING SHALL BE PROVIDED BY THE OWNER. CONTRACTOR TO COORDINATE TESTING PER THE SPECIFICATIONS.
- (12) ANY DAMAGE TO SURROUNDING IMPROVEMENTS NOT SPECIFIED FOR REPLACEMENT SHALL BE RESTORED TO PREEXISTING CONDITIONS BY THE CONTRACTOR AT NO COST TO THE OWNER.

ADA BID TOTAL ESTIMATED QUANTITIES		
ITEM	UNIT	ESTIMATED QUANTITY
R&R- Remove and Replace, F&I- Furnish and Install		
MOBILIZATION	LS	1
TRAFFIC CONTROL	LS	1
R&R GRADING W BASE COURSE	CY	47
R&R 4" CONCRETE	SY	335
R&R 6" CONCRETE	SY	6
R&R 7" CONCRETE	SY	27
REMOVE HANDRAIL	EA	2

DRAINAGE BID TOTAL ESTIMATED QUANTITIES		
ITEM	UNIT	ESTIMATED QUANTITY
R&R- Remove and Replace, F&I- Furnish and Install		
MOBILIZATION	LS	1
TRAFFIC CONTROL	LS	1
R&R 2.5' C&G	LF	321
R&R ASPHALT PATCH	SY	148
R&R GRADING W BASE COURSE	CY	75
R&R 4" CONCRETE	SY	10
R&R 7" CONCRETE	SY	236
R&R 8'-6" CURBWALK	LF	35
LOWER DRAIN	EA	1
R&R HOOD AND FRAME	EA	1

ALT 1 BID TOTAL ESTIMATED QUANTITIES		
ITEM	UNIT	ESTIMATED QUANTITY
R&R- Remove and Replace, F&I- Furnish and Install		
MOBILIZATION	LS	1
TRAFFIC CONTROL	LS	1
R&R ASPHALT PATCH	SY	38
R&R GRADING W BASE COURSE	CY	25
R&R 8'-6" CURBWALK	LF	165

NOTES:

- 1) GRADING W BASE COURSE ITEM INCLUDES ALL QUANTITY REQUIRED FOR ASPHALT PATCH, CURBWALK, C&G, 4" CONCRETE, AND 7" CONCRETE PAVING.
- 2) QUANTITIES SHOWN ON THIS SHEET ARE PROVIDED FOR REFERENCE ONLY AND NOT TO BE USED FOR BIDDING PURPOSES. CONTRACTOR SHALL PERFORM QUANTITY TAKEOFFS PRIOR TO BIDDING. ENGINEER IS NOT LIABLE FOR DISCREPANCIES BETWEEN QUANTITIES PRESENTED HERE AND ACTUAL INSTALLED QUANTITIES.

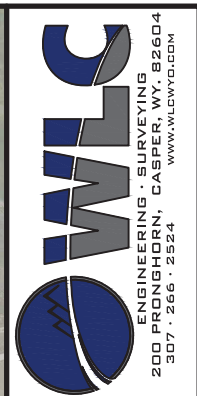
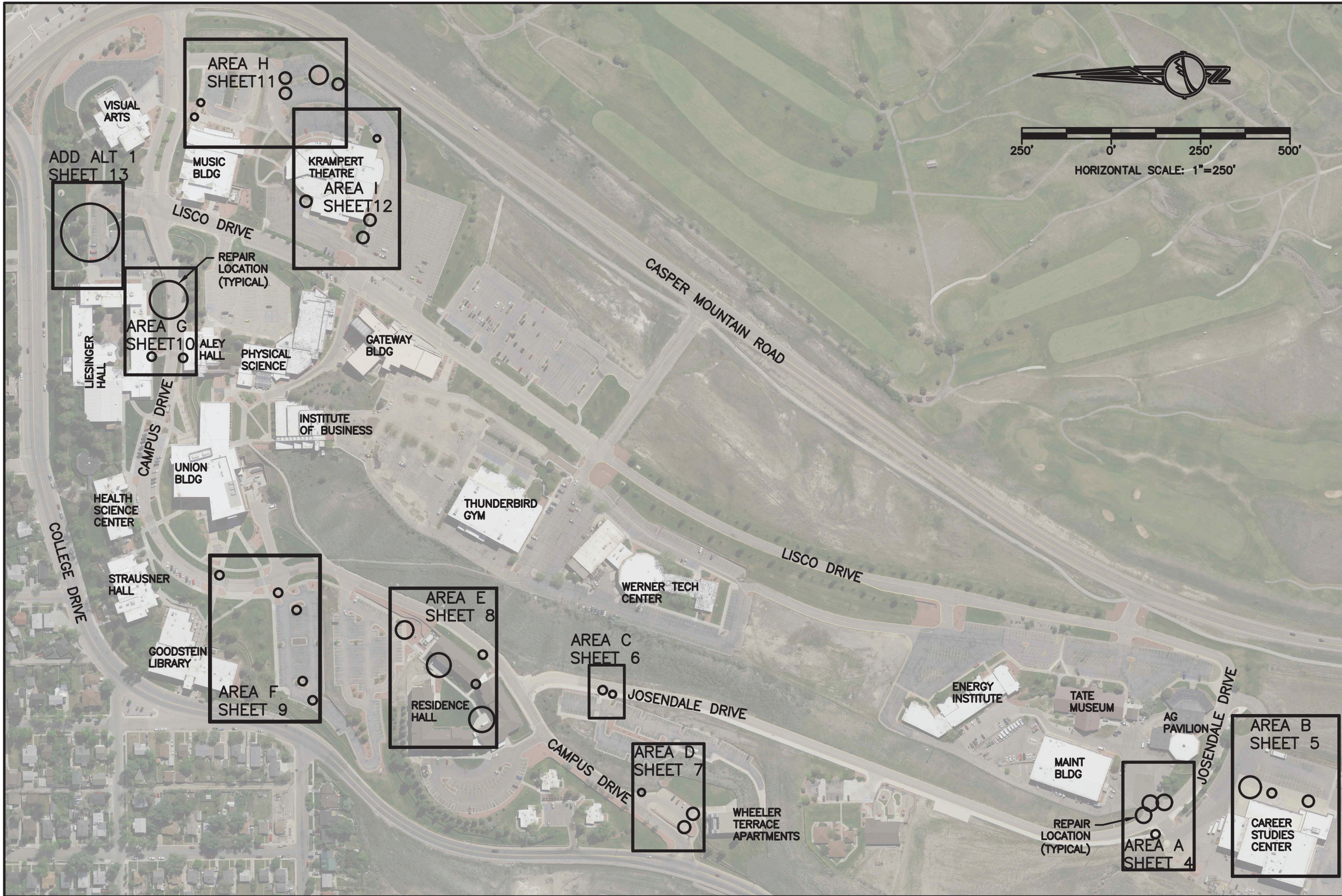


Drwg. By: FGF W.O. No.: 17826
 Chk. By: JLS Book No.:
 Acad File: 2024-CC-MISC-CONCRETE.dwg
 FOR: CASPER COLLEGE FACILITY OPERATIONS

REVISIONS

CASPER COLLEGE
 2024 ADA AND DRAINAGE CONCRETE REPAIRS
 GENERAL NOTES
 CASPER, WY

N:\CLIENT\CASPER COLLEGE\17826-CC-2024 CONCRETE REPAIRS\CIVIL\DWG\DESIGN\2024 CC MISC CONCRETE.DWG



Drwg. By: FGF W.O. No.: 17826
 Chk. By: JLS Book No.:
 Acad. File: 2024 CC MISC CONCRETE.dwg
 FOR: CASPER COLLEGE
 FACILITY OPERATIONS

REVISIONS

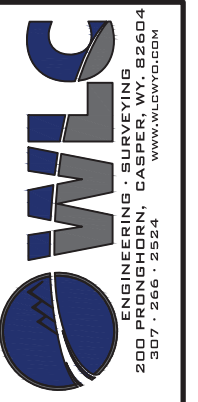
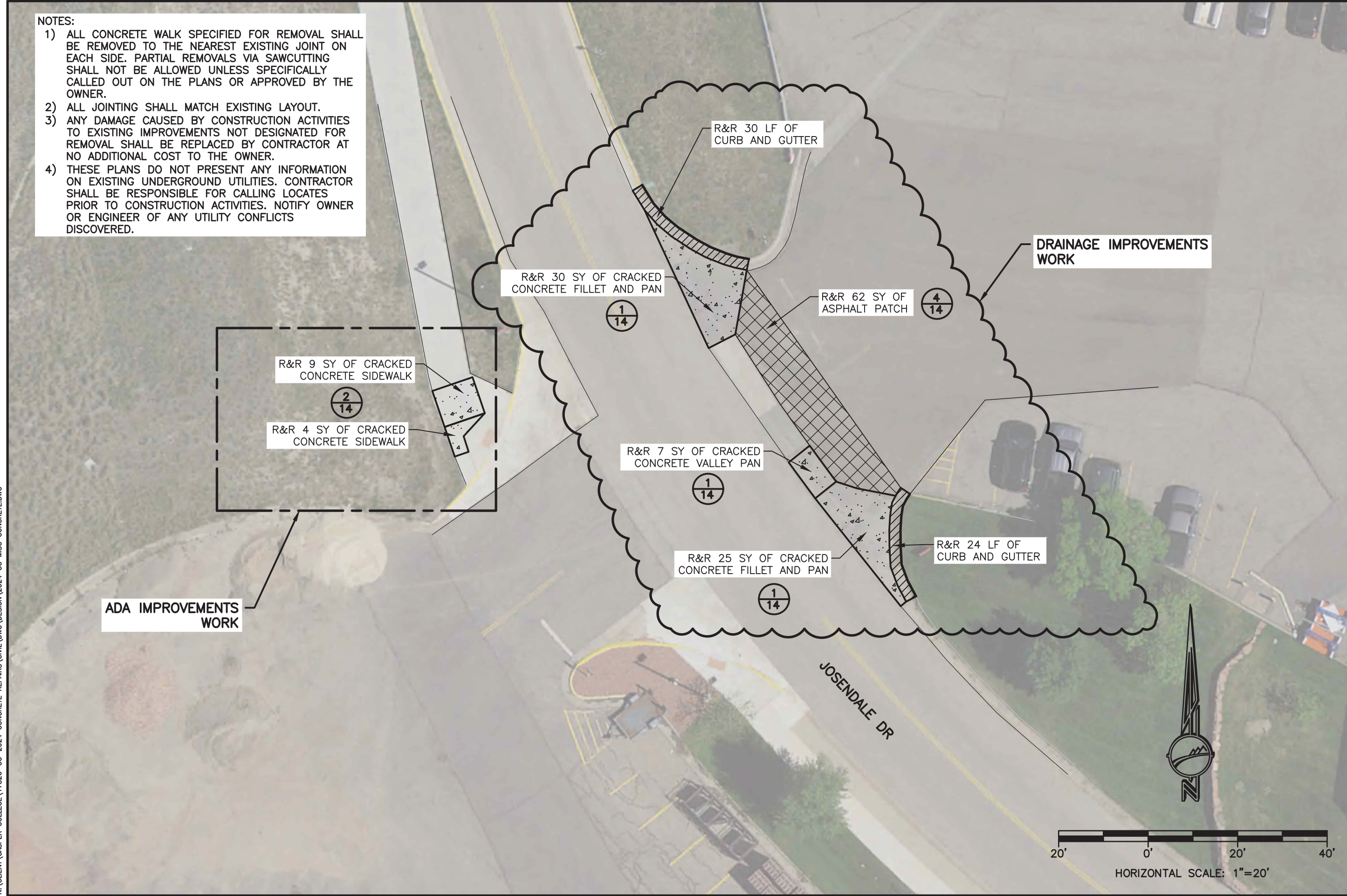
NO.	DESCRIPTION

CASPER COLLEGE
 2024 ADA AND DRAINAGE CONCRETE REPAIRS
 KEY MAP
 CASPER, WY

SHEET NO.
 3 OF 16
 DATE:
 12/15/23

NOTES:

- 1) ALL CONCRETE WALK SPECIFIED FOR REMOVAL SHALL BE REMOVED TO THE NEAREST EXISTING JOINT ON EACH SIDE. PARTIAL REMOVALS VIA SAWCUTTING SHALL NOT BE ALLOWED UNLESS SPECIFICALLY CALLED OUT ON THE PLANS OR APPROVED BY THE OWNER.
- 2) ALL JOINTING SHALL MATCH EXISTING LAYOUT.
- 3) ANY DAMAGE CAUSED BY CONSTRUCTION ACTIVITIES TO EXISTING IMPROVEMENTS NOT DESIGNATED FOR REMOVAL SHALL BE REPLACED BY CONTRACTOR AT NO ADDITIONAL COST TO THE OWNER.
- 4) THESE PLANS DO NOT PRESENT ANY INFORMATION ON EXISTING UNDERGROUND UTILITIES. CONTRACTOR SHALL BE RESPONSIBLE FOR CALLING LOCATES PRIOR TO CONSTRUCTION ACTIVITIES. NOTIFY OWNER OR ENGINEER OF ANY UTILITY CONFLICTS DISCOVERED.



W.O. No.: 17826
 Book No.:
 Acad File: 2024-CC-MISC-CONCRETE.dwg
 FOR: CASPER COLLEGE FACILITY OPERATIONS

REVISIONS

No.	Description

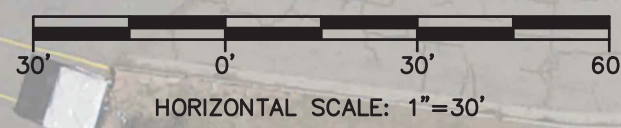
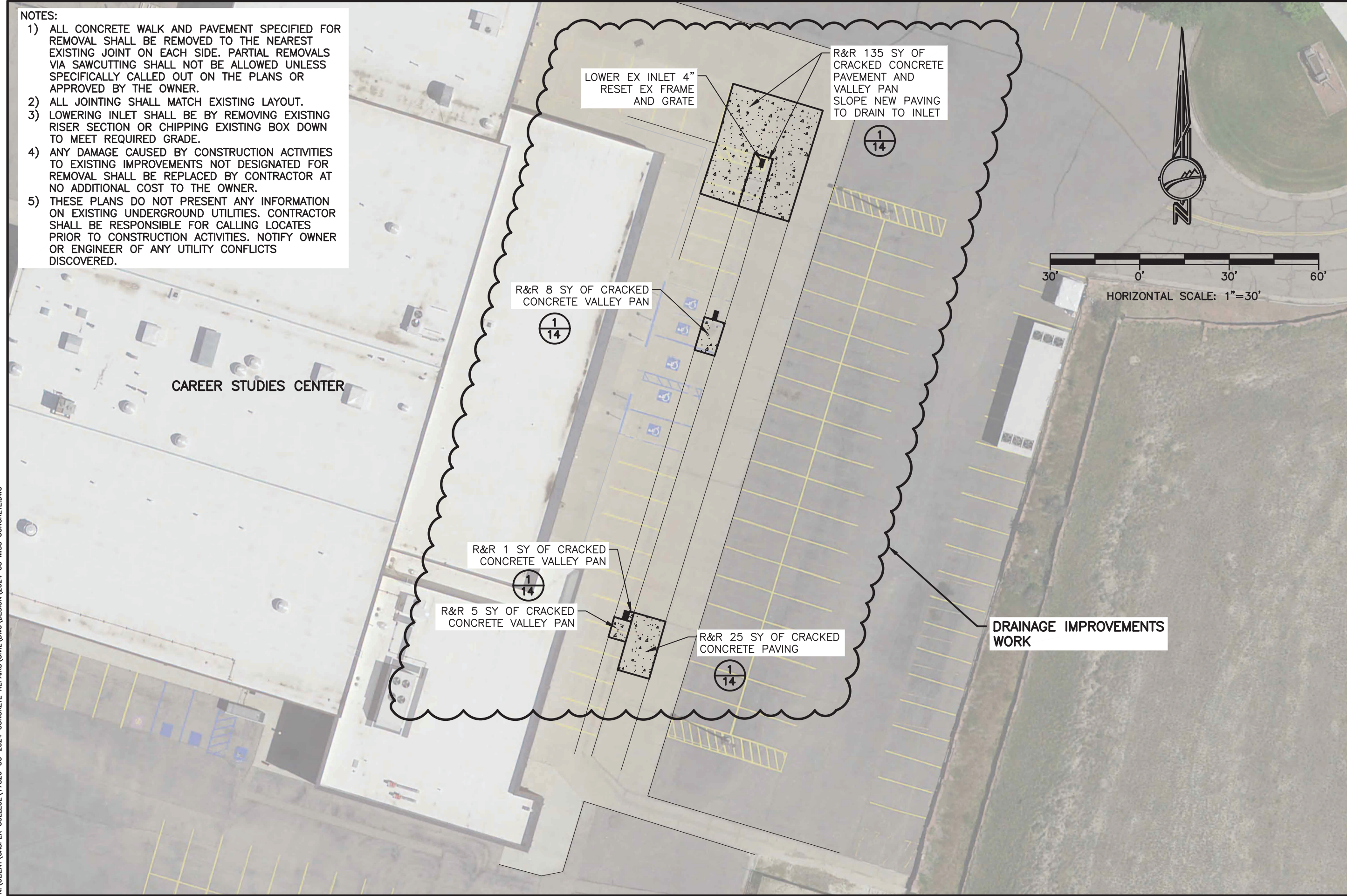
CASPER COLLEGE
 2024 ADA AND DRAINAGE CONCRETE REPAIRS
 AREA A
 CASPER, WY

SHEET NO.
4 OF 16
 DATE:
 12/15/23

N:\CLIENT\CASPER COLLEGE\17826-CC-2024 CONCRETE REPAIRS\CIVIL\DWG\DESIGN\2024 CC MISC CONCRETE.DWG

NOTES:

- 1) ALL CONCRETE WALK AND PAVEMENT SPECIFIED FOR REMOVAL SHALL BE REMOVED TO THE NEAREST EXISTING JOINT ON EACH SIDE. PARTIAL REMOVALS VIA SAWCUTTING SHALL NOT BE ALLOWED UNLESS SPECIFICALLY CALLED OUT ON THE PLANS OR APPROVED BY THE OWNER.
- 2) ALL JOINTING SHALL MATCH EXISTING LAYOUT.
- 3) LOWERING INLET SHALL BE BY REMOVING EXISTING RISER SECTION OR CHIPPING EXISTING BOX DOWN TO MEET REQUIRED GRADE.
- 4) ANY DAMAGE CAUSED BY CONSTRUCTION ACTIVITIES TO EXISTING IMPROVEMENTS NOT DESIGNATED FOR REMOVAL SHALL BE REPLACED BY CONTRACTOR AT NO ADDITIONAL COST TO THE OWNER.
- 5) THESE PLANS DO NOT PRESENT ANY INFORMATION ON EXISTING UNDERGROUND UTILITIES. CONTRACTOR SHALL BE RESPONSIBLE FOR CALLING LOCATES PRIOR TO CONSTRUCTION ACTIVITIES. NOTIFY OWNER OR ENGINEER OF ANY UTILITY CONFLICTS DISCOVERED.



Drwg. By: FGF W.O. No.: 17826
 Chk. By: JLS Book No.:
 Acad File: 2024_CC_MISC_CONCRETE.dwg
 FOR: CASPER COLLEGE FACILITY OPERATIONS

REVISIONS

No.	Description

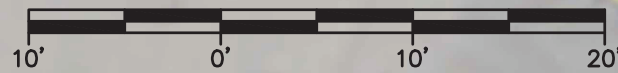
CASPER COLLEGE
 2024 ADA AND DRAINAGE CONCRETE REPAIRS
 AREA B
 CASPER, WY

N:\CLIENT\CASPER COLLEGE\17826-CC-2024 CONCRETE REPAIRS\CIVIL\DWG\DESIGN\2024 CC MISC CONCRETE.DWG

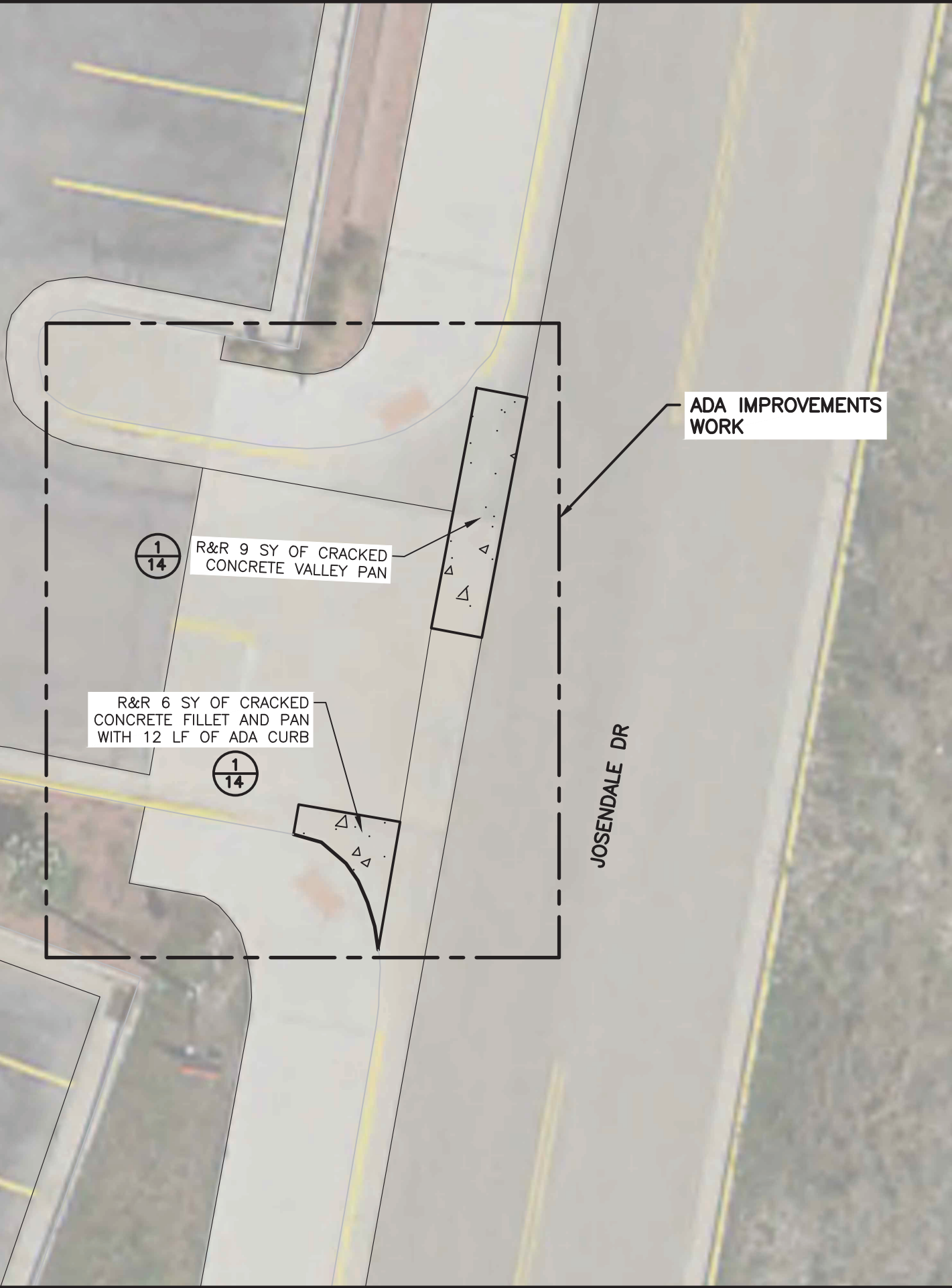
NOTES:

- 1) ALL CONCRETE WALK SPECIFIED FOR REMOVAL SHALL BE REMOVED TO THE NEAREST EXISTING JOINT ON EACH SIDE. PARTIAL REMOVALS VIA SAWCUTTING SHALL NOT BE ALLOWED UNLESS SPECIFICALLY CALLED OUT ON THE PLANS OR APPROVED BY THE OWNER.
- 2) ALL JOINTING SHALL MATCH EXISTING LAYOUT.
- 3) ANY DAMAGE CAUSED BY CONSTRUCTION ACTIVITIES TO EXISTING IMPROVEMENTS NOT DESIGNATED FOR REMOVAL SHALL BE REPLACED BY CONTRACTOR AT NO ADDITIONAL COST TO THE OWNER.
- 4) THESE PLANS DO NOT PRESENT ANY INFORMATION ON EXISTING UNDERGROUND UTILITIES. CONTRACTOR SHALL BE RESPONSIBLE FOR CALLING LOCATES PRIOR TO CONSTRUCTION ACTIVITIES. NOTIFY OWNER OR ENGINEER OF ANY UTILITY CONFLICTS DISCOVERED.

N:\CLIENT\CASPER COLLEGE\17826-CC-2024 CONCRETE REPAIRS\CIVIL\DWG\DESIGN\2024 CC MISC CONCRETE.DWG



HORIZONTAL SCALE: 1"=10'



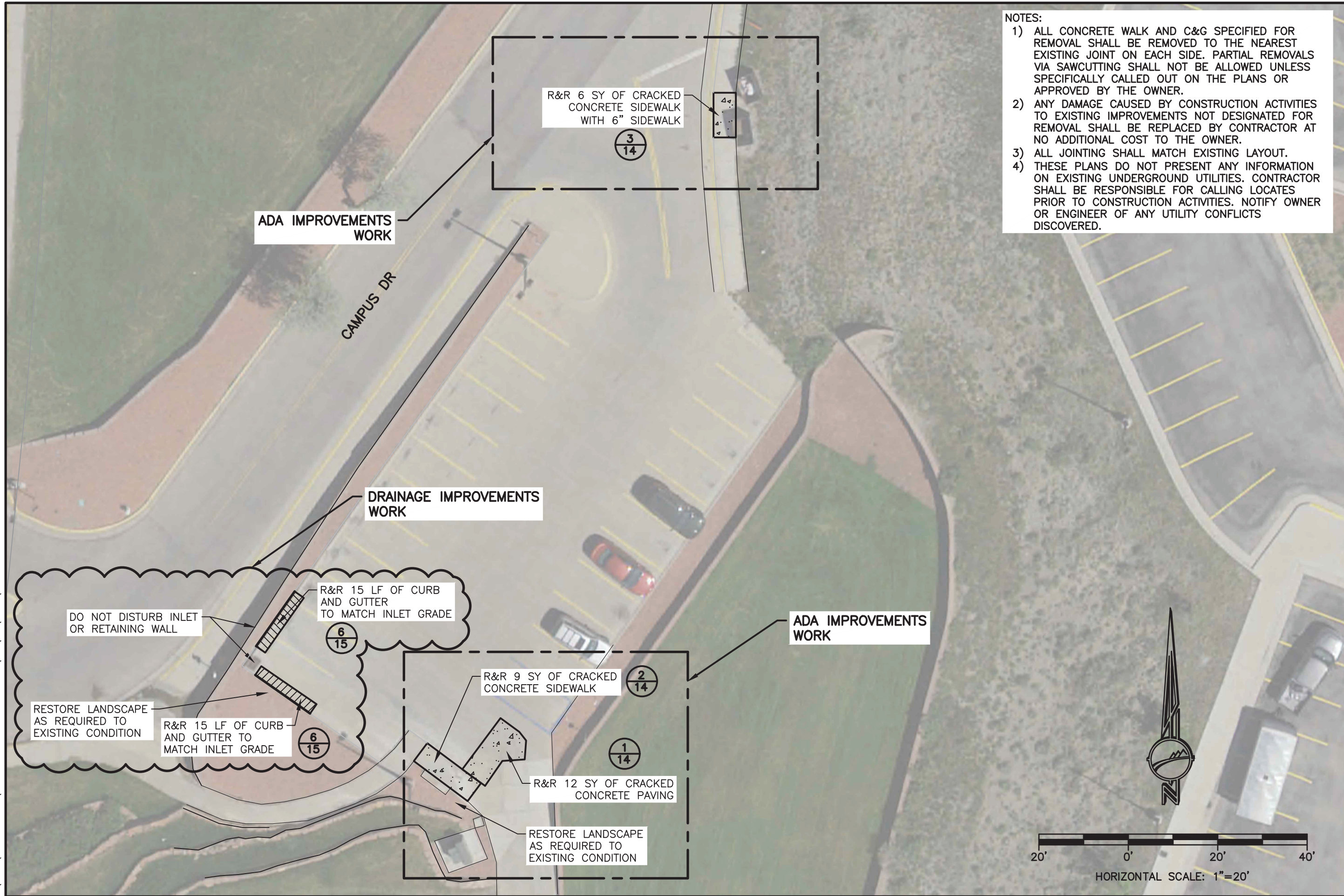
Drwg. By: FGF W.O. No.: 17826
 Chk. By: JLS Book No.:
 Acad. File: 2024 CC MISC CONCRETE.dwg
 FOR: CASPER COLLEGE FACILITY OPERATIONS

REVISIONS

CASPER COLLEGE
 2024 ADA AND DRAINAGE CONCRETE REPAIRS
 AREA C
 CASPER, WY

SHEET NO.
6 OF 16
 DATE:
 12/15/23

N:\CLIENT\CASPER COLLEGE\CC-2024 CONCRETE REPAIRS\CIVIL\DWG\DESIGN\2024 CC MISC CONCRETE.DWG



NOTES:

- 1) ALL CONCRETE WALK AND C&G SPECIFIED FOR REMOVAL SHALL BE REMOVED TO THE NEAREST EXISTING JOINT ON EACH SIDE. PARTIAL REMOVALS VIA SAWCUTTING SHALL NOT BE ALLOWED UNLESS SPECIFICALLY CALLED OUT ON THE PLANS OR APPROVED BY THE OWNER.
- 2) ANY DAMAGE CAUSED BY CONSTRUCTION ACTIVITIES TO EXISTING IMPROVEMENTS NOT DESIGNATED FOR REMOVAL SHALL BE REPLACED BY CONTRACTOR AT NO ADDITIONAL COST TO THE OWNER.
- 3) ALL JOINTING SHALL MATCH EXISTING LAYOUT.
- 4) THESE PLANS DO NOT PRESENT ANY INFORMATION ON EXISTING UNDERGROUND UTILITIES. CONTRACTOR SHALL BE RESPONSIBLE FOR CALLING LOCATES PRIOR TO CONSTRUCTION ACTIVITIES. NOTIFY OWNER OR ENGINEER OF ANY UTILITY CONFLICTS DISCOVERED.



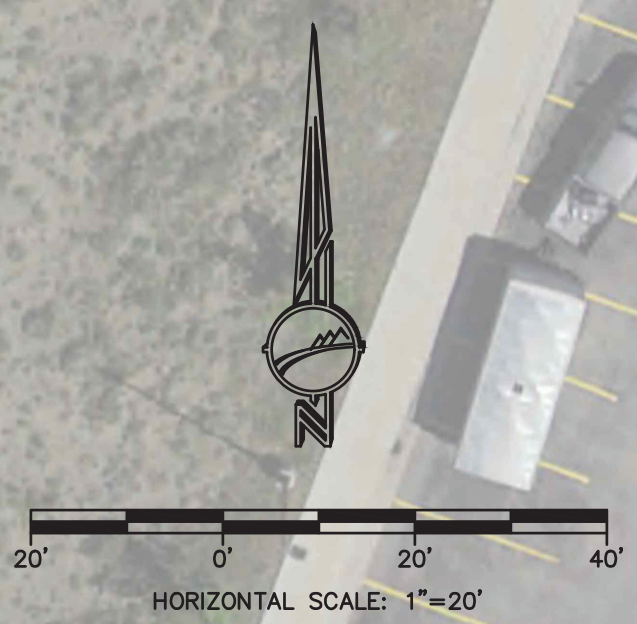
Drwg. By: FGF W.O. No.: 17826
 Chk. By: JLS Book No.:
 Acad. File: 2024-CC-MISC-CONCRETE.dwg
 FOR: CASPER COLLEGE FACILITY OPERATIONS

REVISIONS

No.	Description

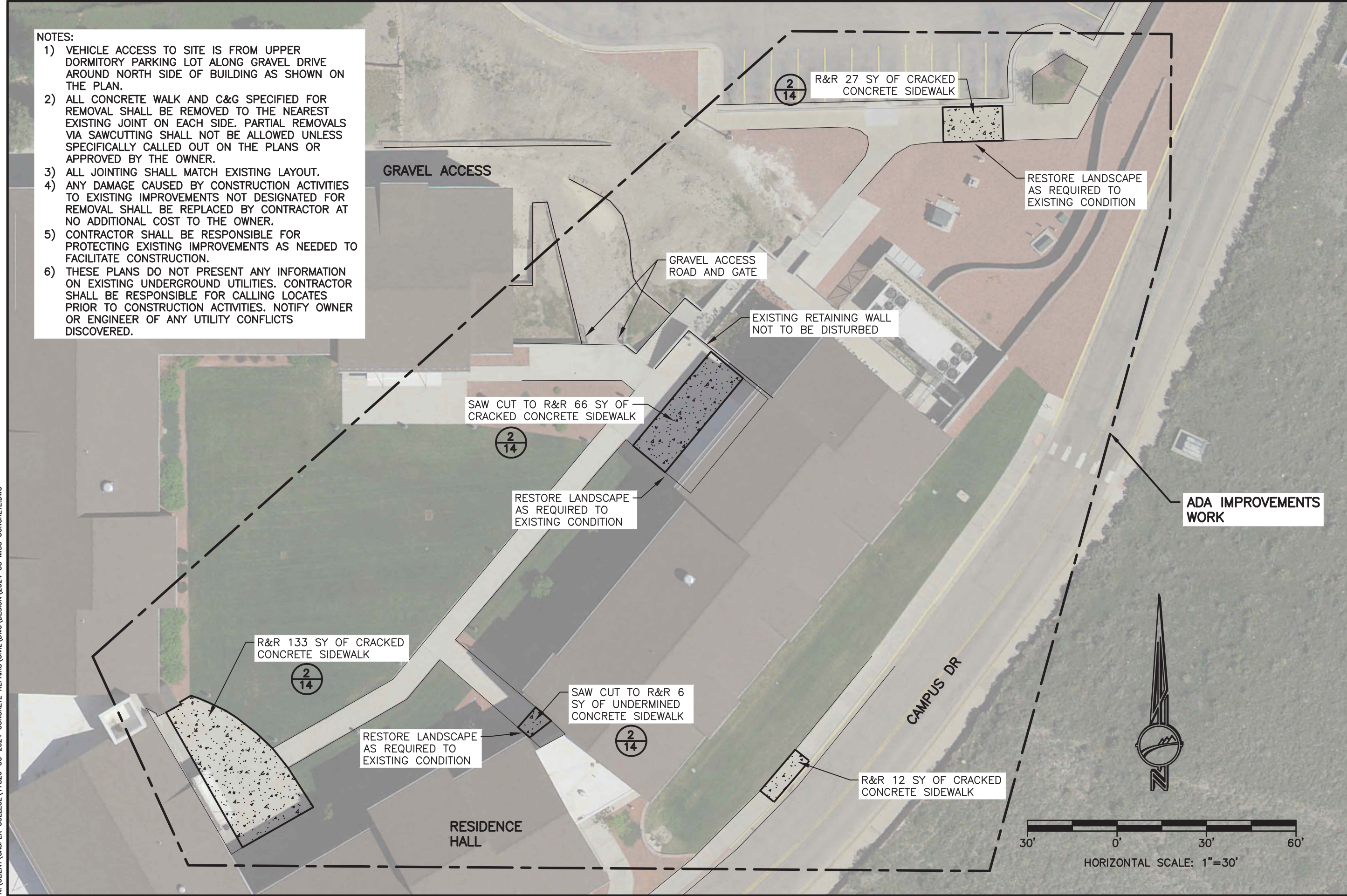
CASPER COLLEGE
 2024 ADA AND DRAINAGE CONCRETE REPAIRS
 AREA D
 CASPER, WY

SHEET NO. 7 OF 16
 DATE: 12/15/23



NOTES:

- 1) VEHICLE ACCESS TO SITE IS FROM UPPER DORMITORY PARKING LOT ALONG GRAVEL DRIVE AROUND NORTH SIDE OF BUILDING AS SHOWN ON THE PLAN.
- 2) ALL CONCRETE WALK AND C&G SPECIFIED FOR REMOVAL SHALL BE REMOVED TO THE NEAREST EXISTING JOINT ON EACH SIDE. PARTIAL REMOVALS VIA SAWCUTTING SHALL NOT BE ALLOWED UNLESS SPECIFICALLY CALLED OUT ON THE PLANS OR APPROVED BY THE OWNER.
- 3) ALL JOINTING SHALL MATCH EXISTING LAYOUT.
- 4) ANY DAMAGE CAUSED BY CONSTRUCTION ACTIVITIES TO EXISTING IMPROVEMENTS NOT DESIGNATED FOR REMOVAL SHALL BE REPLACED BY CONTRACTOR AT NO ADDITIONAL COST TO THE OWNER.
- 5) CONTRACTOR SHALL BE RESPONSIBLE FOR PROTECTING EXISTING IMPROVEMENTS AS NEEDED TO FACILITATE CONSTRUCTION.
- 6) THESE PLANS DO NOT PRESENT ANY INFORMATION ON EXISTING UNDERGROUND UTILITIES. CONTRACTOR SHALL BE RESPONSIBLE FOR CALLING LOCATES PRIOR TO CONSTRUCTION ACTIVITIES. NOTIFY OWNER OR ENGINEER OF ANY UTILITY CONFLICTS DISCOVERED.



Drwg. By: FGF W.O. No.: 17826
 Chk. By: JLS Book No.:
 Acad. File: 2024 CC MISC CONCRETE.dwg
 FOR: CASPER COLLEGE FACILITY OPERATIONS

REVISIONS

No.	Description

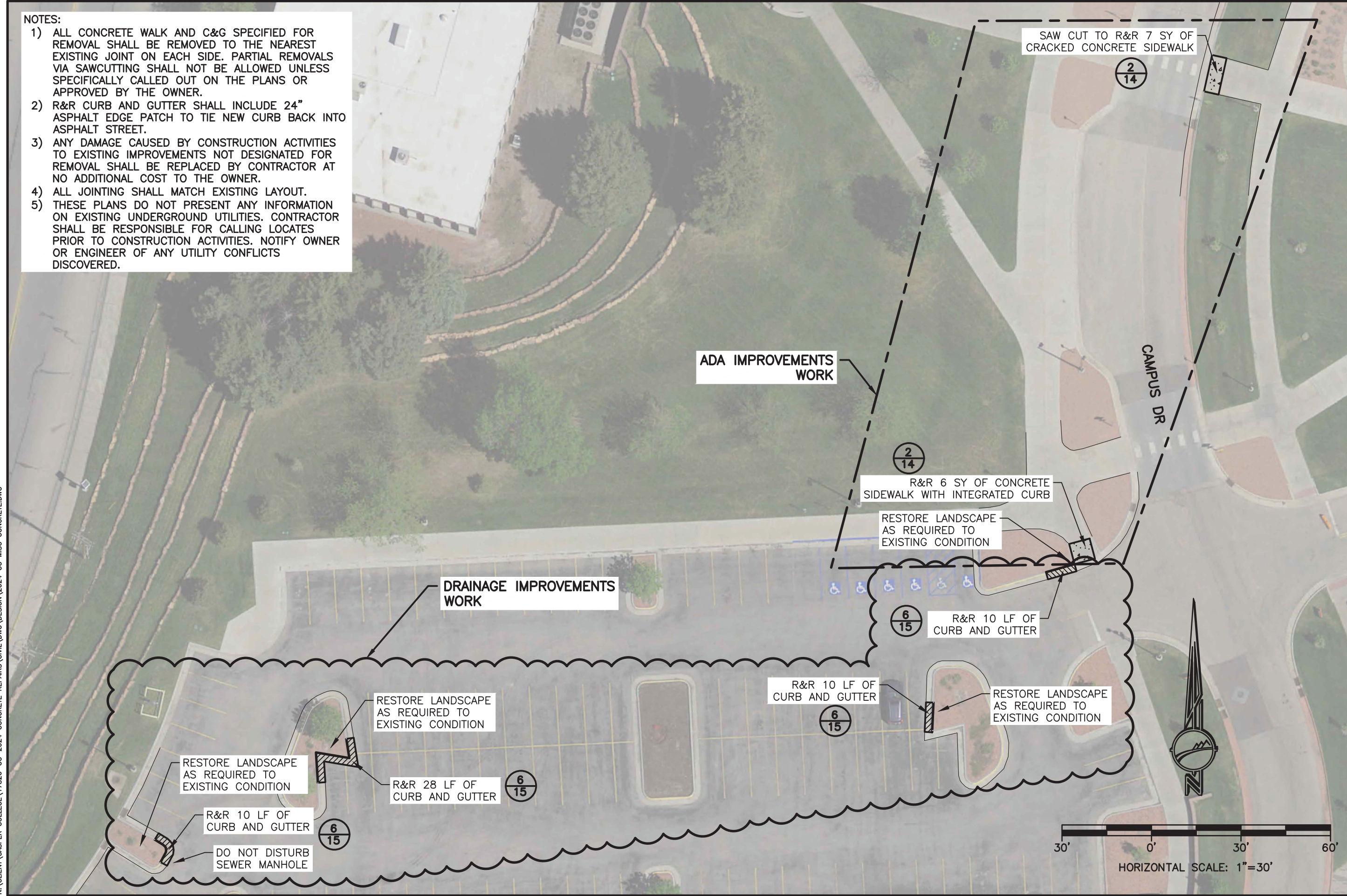
CASPER COLLEGE
2024 ADA AND DRAINAGE CONCRETE REPAIRS
AREA E
CASPER, WY

SHEET NO. **8 OF 16**
 DATE: **12/15/23**

N:\CLIENT\CASPER COLLEGE\17826-CC-2024 CONCRETE REPAIRS\CIVIL\DWG\DESIGN\2024 CC MISC CONCRETE.DWG

NOTES:

- 1) ALL CONCRETE WALK AND C&G SPECIFIED FOR REMOVAL SHALL BE REMOVED TO THE NEAREST EXISTING JOINT ON EACH SIDE. PARTIAL REMOVALS VIA SAWCUTTING SHALL NOT BE ALLOWED UNLESS SPECIFICALLY CALLED OUT ON THE PLANS OR APPROVED BY THE OWNER.
- 2) R&R CURB AND GUTTER SHALL INCLUDE 24" ASPHALT EDGE PATCH TO TIE NEW CURB BACK INTO ASPHALT STREET.
- 3) ANY DAMAGE CAUSED BY CONSTRUCTION ACTIVITIES TO EXISTING IMPROVEMENTS NOT DESIGNATED FOR REMOVAL SHALL BE REPLACED BY CONTRACTOR AT NO ADDITIONAL COST TO THE OWNER.
- 4) ALL JOINTING SHALL MATCH EXISTING LAYOUT.
- 5) THESE PLANS DO NOT PRESENT ANY INFORMATION ON EXISTING UNDERGROUND UTILITIES. CONTRACTOR SHALL BE RESPONSIBLE FOR CALLING LOCATES PRIOR TO CONSTRUCTION ACTIVITIES. NOTIFY OWNER OR ENGINEER OF ANY UTILITY CONFLICTS DISCOVERED.



Drwg. By: FGF W.O. No.: 17826
 Chk. By: JLS Book No.:
 Acad. File: 2024 CC MISC. CONCRETE.dwg
 FOR: CASPER COLLEGE FACILITY OPERATIONS

REVISIONS

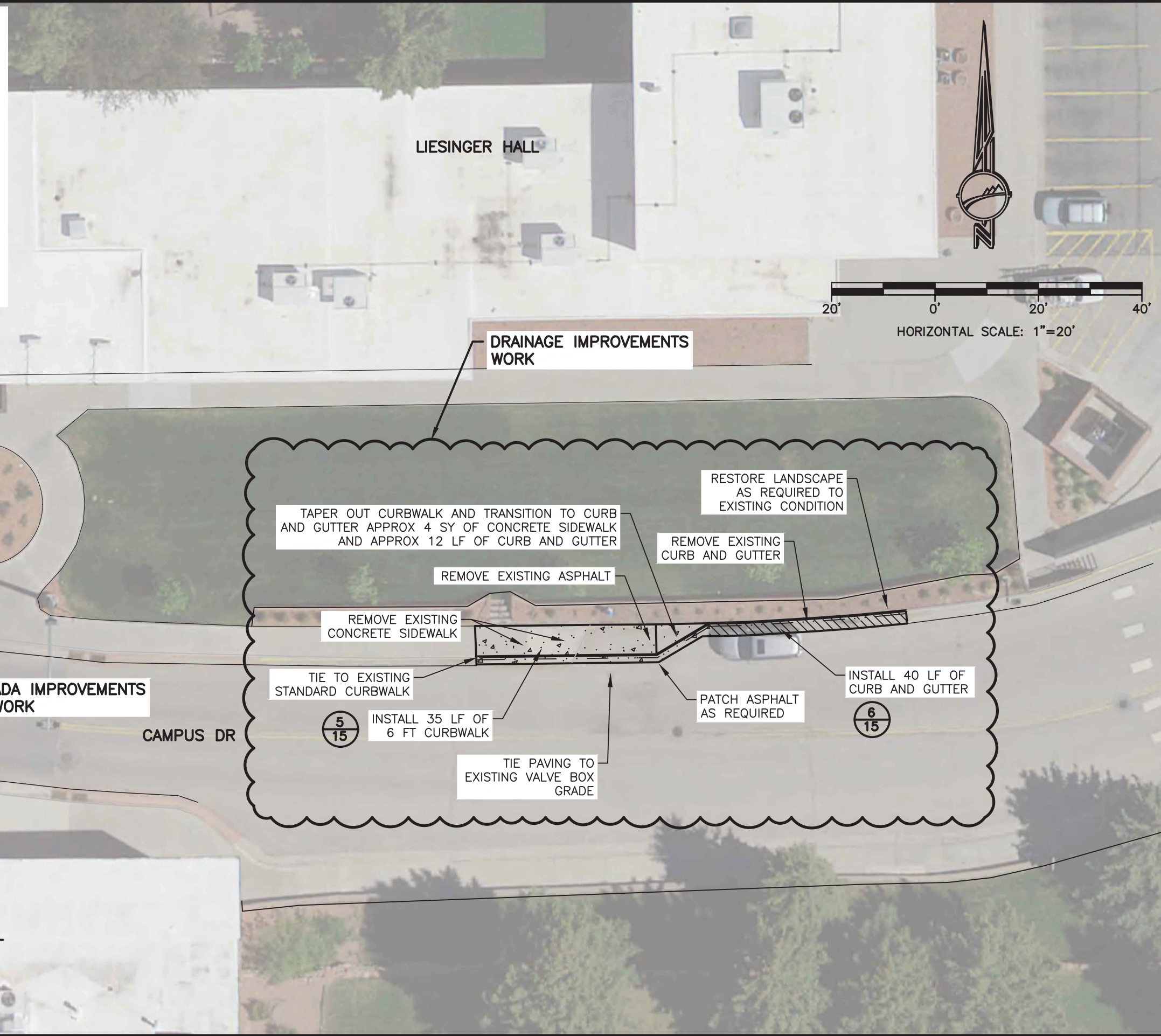
No.	Description

CASPER COLLEGE
 2024 ADA AND DRAINAGE CONCRETE REPAIRS
 AREA F
 CASPER, WY

N:\CLIENT\CASPER COLLEGE\17826-CC-2024 CONCRETE REPAIRS\CIVIL\DWG\DESIGN\2024 CC MISC CONCRETE.DWG

NOTES:

- 1) ALL CONCRETE WALK AND C&G SPECIFIED FOR REMOVAL SHALL BE REMOVED TO THE NEAREST EXISTING JOINT ON EACH SIDE. PARTIAL REMOVALS VIA SAWCUTTING SHALL NOT BE ALLOWED UNLESS SPECIFICALLY CALLED OUT ON THE PLANS OR APPROVED BY THE OWNER.
- 2) R&R CURBWALK SHALL INCLUDE 24" ASPHALT EDGE PATCH TO TIE NEW CURB BACK INTO ASPHALT STREET.
- 3) ANY DAMAGE CAUSED BY CONSTRUCTION ACTIVITIES TO EXISTING IMPROVEMENTS NOT DESIGNATED FOR REMOVAL SHALL BE REPLACED BY CONTRACTOR AT NO ADDITIONAL COST TO THE OWNER.
- 4) ALL JOINTING SHALL MATCH EXISTING LAYOUT.
- 5) THESE PLANS DO NOT PRESENT ANY INFORMATION ON EXISTING UNDERGROUND UTILITIES. CONTRACTOR SHALL BE RESPONSIBLE FOR CALLING LOCATES PRIOR TO CONSTRUCTION ACTIVITIES. NOTIFY OWNER OR ENGINEER OF ANY UTILITY CONFLICTS DISCOVERED.



R&R 7 SY OF CRACKED CONCRETE SIDEWALK

2/14

DRAINAGE IMPROVEMENTS WORK

20' 0' 20' 40'
HORIZONTAL SCALE: 1"=20'

RESTORE LANDSCAPE AS REQUIRED TO EXISTING CONDITION

TAPER OUT CURBWALK AND TRANSITION TO CURB AND GUTTER APPROX 4 SY OF CONCRETE SIDEWALK AND APPROX 12 LF OF CURB AND GUTTER

REMOVE EXISTING CURB AND GUTTER

REMOVE EXISTING ASPHALT

REMOVE EXISTING CONCRETE SIDEWALK

ADA IMPROVEMENTS WORK

TIE TO EXISTING STANDARD CURBWALK

PATCH ASPHALT AS REQUIRED

INSTALL 40 LF OF CURB AND GUTTER

5/15
INSTALL 35 LF OF 6 FT CURBWALK

TIE PAVING TO EXISTING VALVE BOX GRADE

6/15

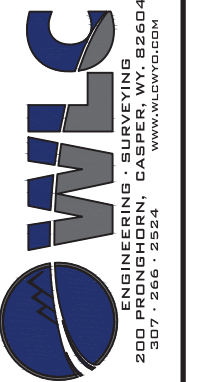
R&R 6 SY OF CRACKED CONCRETE SIDEWALK

2/14

ALEY HALL

CAMPUS DR

LIESINGER HALL



Drwg. By: FGF W.O. No.: 17826
 Chk. By: JLS Book No.:
 Acad. File: 2024 CC MISC CONCRETE.dwg
 FOR: CASPER COLLEGE FACILITY OPERATIONS

REVISIONS

NO.	DESCRIPTION

CASPER COLLEGE
 2024 ADA AND DRAINAGE CONCRETE REPAIRS
 AREA G
 CASPER, WY

SHEET NO. 10 OF 16
 DATE: 12/15/23

N:\CLIENT\CASPER COLLEGE\17826-CC-2024 CONCRETE REPAIRS\CIVIL\DWG\DESIGN\2024 CC MISC CONCRETE.DWG

NOTES:

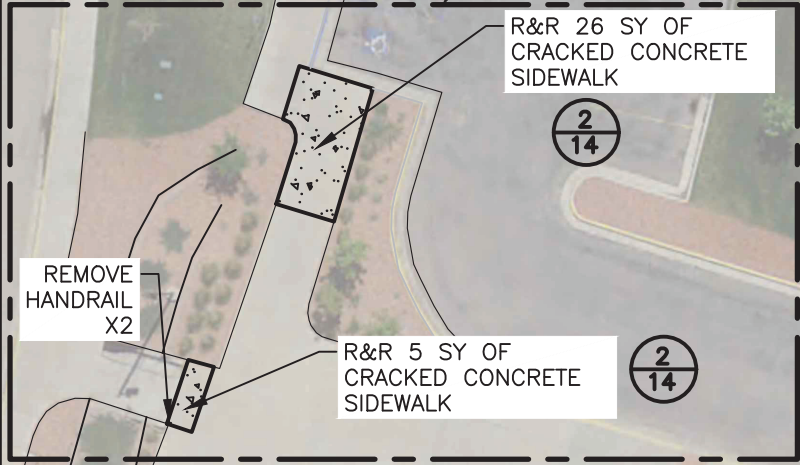
- 1) ALL CONCRETE WALK AND C&G SPECIFIED FOR REMOVAL SHALL BE REMOVED TO THE NEAREST EXISTING JOINT ON EACH SIDE. PARTIAL REMOVALS VIA SAWCUTTING SHALL NOT BE ALLOWED UNLESS SPECIFICALLY CALLED OUT ON THE PLANS OR APPROVED BY THE OWNER.
- 2) ALL JOINTING SHALL MATCH EXISTING LAYOUT.
- 3) R&R CURB AND GUTTER SHALL INCLUDE 24" ASPHALT EDGE PATCH TO TIE NEW CURB BACK INTO ASPHALT STREET.
- 4) ANY DAMAGE CAUSED BY CONSTRUCTION ACTIVITIES TO EXISTING IMPROVEMENTS NOT DESIGNATED FOR REMOVAL SHALL BE REPLACED BY CONTRACTOR AT NO ADDITIONAL COST TO THE OWNER.
- 5) REMOVED RAILING SHALL BE REPLACED BY OWNER. CONTRACTOR NOT RESPONSIBLE FOR NEW RAILING.
- 6) THESE PLANS DO NOT PRESENT ANY INFORMATION ON EXISTING UNDERGROUND UTILITIES. CONTRACTOR SHALL BE RESPONSIBLE FOR CALLING LOCATES PRIOR TO CONSTRUCTION ACTIVITIES. NOTIFY OWNER OR ENGINEER OF ANY UTILITY CONFLICTS DISCOVERED.

N:\CLIENT\CASPER COLLEGE\CC-2024 CONCRETE REPAIRS\CIVIL\DWG\DESIGN\2024 CC MISC CONCRETE.DWG

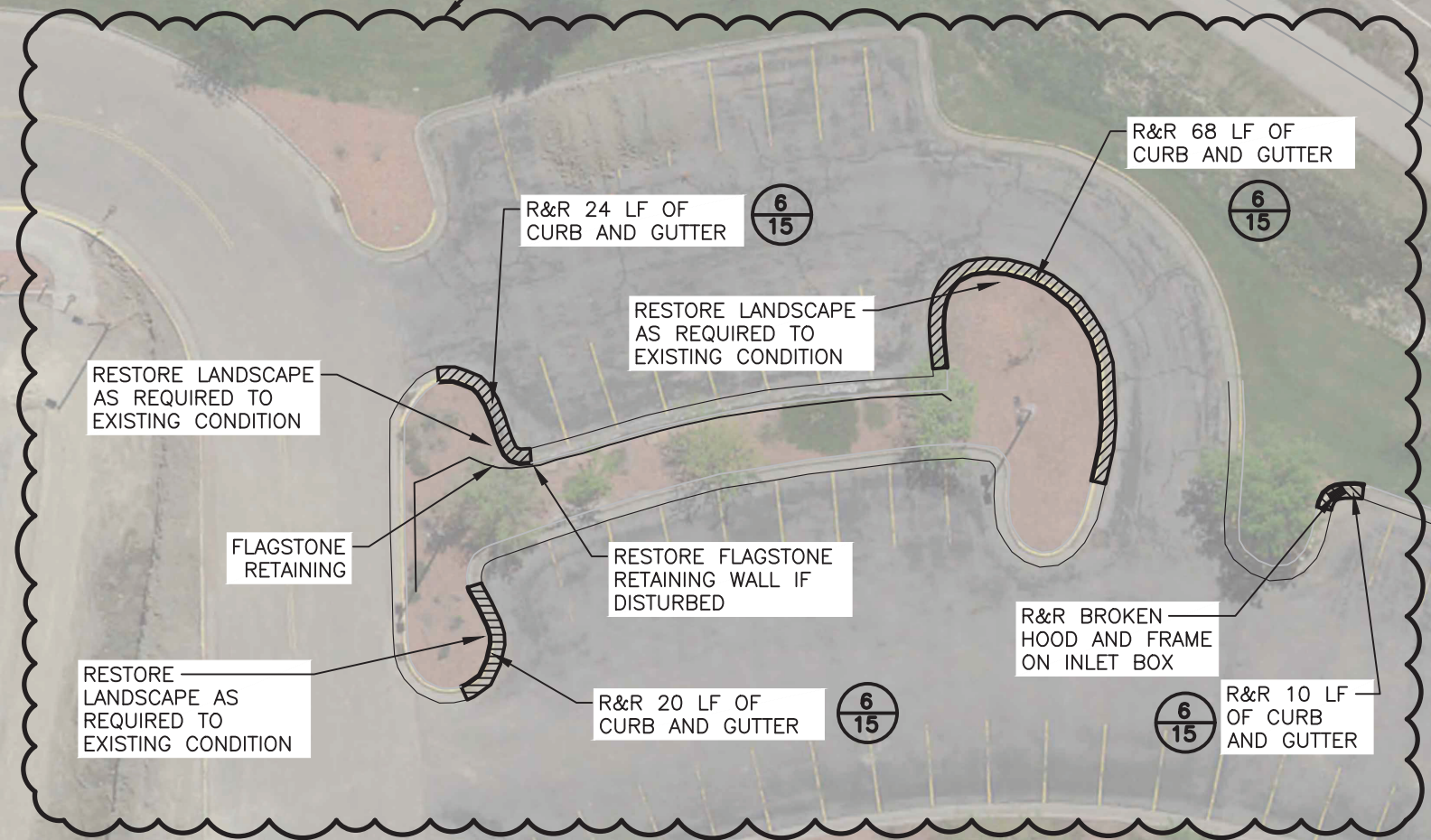
CAMPUS DR

CASPER MTN RD

ADA IMPROVEMENTS WORK

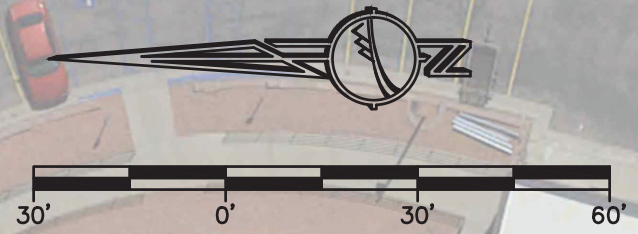


DRAINAGE IMPROVEMENTS WORK



MUSIC BUILDING

KRAMPERT THEATRE



HORIZONTAL SCALE: 1"=30'



Drwg. By: FGF W.O. No.: 17826
 Chk. By: JLS Book No.:
 Acad. File: 2024 CC MISC CONCRETE.dwg
 FOR: CASPER COLLEGE FACILITY OPERATIONS

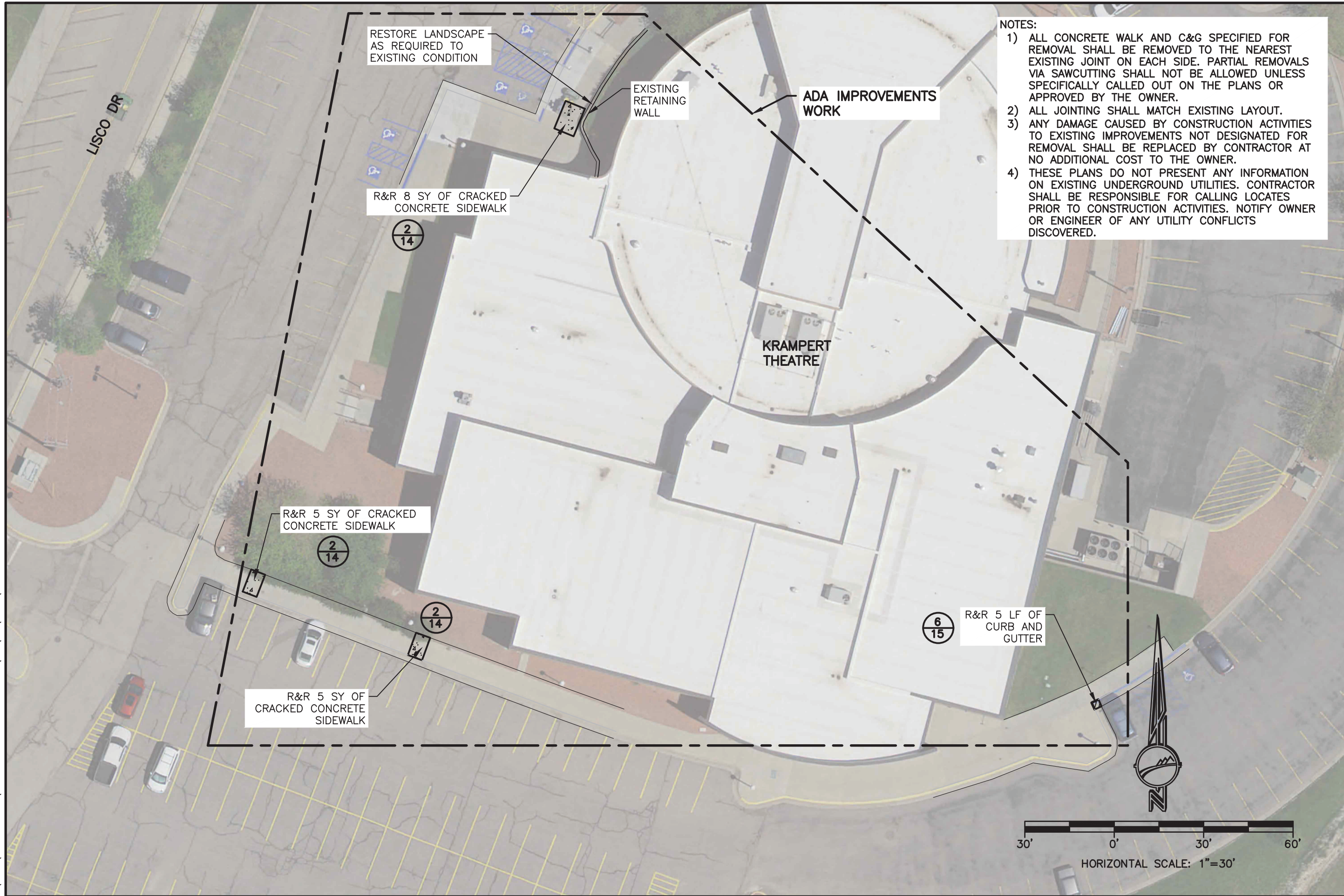
REVISIONS

NO.	DESCRIPTION

CASPER COLLEGE
 2024 ADA AND DRAINAGE CONCRETE REPAIRS
 AREA H
 CASPER, WY

SHEET NO. 11 OF 16
 DATE: 12/15/23

N:\CLIENT\CASPER COLLEGE\17826-CC-2024 CONCRETE REPAIRS\CIVIL\DWG\DESIGN\2024 CC MISC CONCRETE.DWG



NOTES:

- 1) ALL CONCRETE WALK AND C&G SPECIFIED FOR REMOVAL SHALL BE REMOVED TO THE NEAREST EXISTING JOINT ON EACH SIDE. PARTIAL REMOVALS VIA SAWCUTTING SHALL NOT BE ALLOWED UNLESS SPECIFICALLY CALLED OUT ON THE PLANS OR APPROVED BY THE OWNER.
- 2) ALL JOINTING SHALL MATCH EXISTING LAYOUT.
- 3) ANY DAMAGE CAUSED BY CONSTRUCTION ACTIVITIES TO EXISTING IMPROVEMENTS NOT DESIGNATED FOR REMOVAL SHALL BE REPLACED BY CONTRACTOR AT NO ADDITIONAL COST TO THE OWNER.
- 4) THESE PLANS DO NOT PRESENT ANY INFORMATION ON EXISTING UNDERGROUND UTILITIES. CONTRACTOR SHALL BE RESPONSIBLE FOR CALLING LOCATES PRIOR TO CONSTRUCTION ACTIVITIES. NOTIFY OWNER OR ENGINEER OF ANY UTILITY CONFLICTS DISCOVERED.



Drwg. By: FGF W.O. No.: 17826
 Chk. By: JLS Book No.:
 Acad. File: 2024 CC MISC CONCRETE.dwg
 FOR: CASPER COLLEGE
 FACILITY OPERATIONS

REVISIONS

No.	Description

CASPER COLLEGE
 2024 ADA AND DRAINAGE CONCRETE REPAIRS
 AREA 1
 CASPER, WY

SHEET NO.
 12 OF 16
 DATE:
 12/15/23

NOTES:

- 1) ALL CONCRETE PAVEMENT SPECIFIED FOR REMOVAL SHALL BE REMOVED TO THE NEAREST EXISTING JOINT ON EACH SIDE. PARTIAL REMOVALS VIA SAWCUTTING SHALL NOT BE ALLOWED UNLESS SPECIFICALLY CALLED OUT ON THE PLANS OR APPROVED BY THE OWNER.
- 2) JOINT SPACING SHALL MATCH EXISTING JOINTING.
- 3) R&R CURBWALK SHALL INCLUDE 24" ASPHALT EDGE PATCH TO TIE NEW CURB BACK INTO ASPHALT STREET.
- 4) ANY DAMAGE CAUSED BY CONSTRUCTION ACTIVITIES TO EXISTING IMPROVEMENTS NOT DESIGNATED FOR REMOVAL SHALL BE REPLACED BY CONTRACTOR AT NO ADDITIONAL COST TO THE OWNER.
- 5) THESE PLANS DO NOT PRESENT ANY INFORMATION ON EXISTING UNDERGROUND UTILITIES. CONTRACTOR SHALL BE RESPONSIBLE FOR CALLING LOCATES PRIOR TO CONSTRUCTION ACTIVITIES. NOTIFY OWNER OR ENGINEER OF ANY UTILITY CONFLICTS DISCOVERED.



W.O. No.: 17826
 Book No.:
 Acad File: 2024-CC-MISC-CONCRETE.dwg
 Drwg. By: JLS
 Chk. By: JLS
 FOR: CASPER COLLEGE FACILITY OPERATIONS

REVISIONS

No.	Description

CASPER COLLEGE
 2024 ADA AND DRAINAGE CONCRETE REPAIRS
 ADD ALTERNATE 1
 CASPER, WY

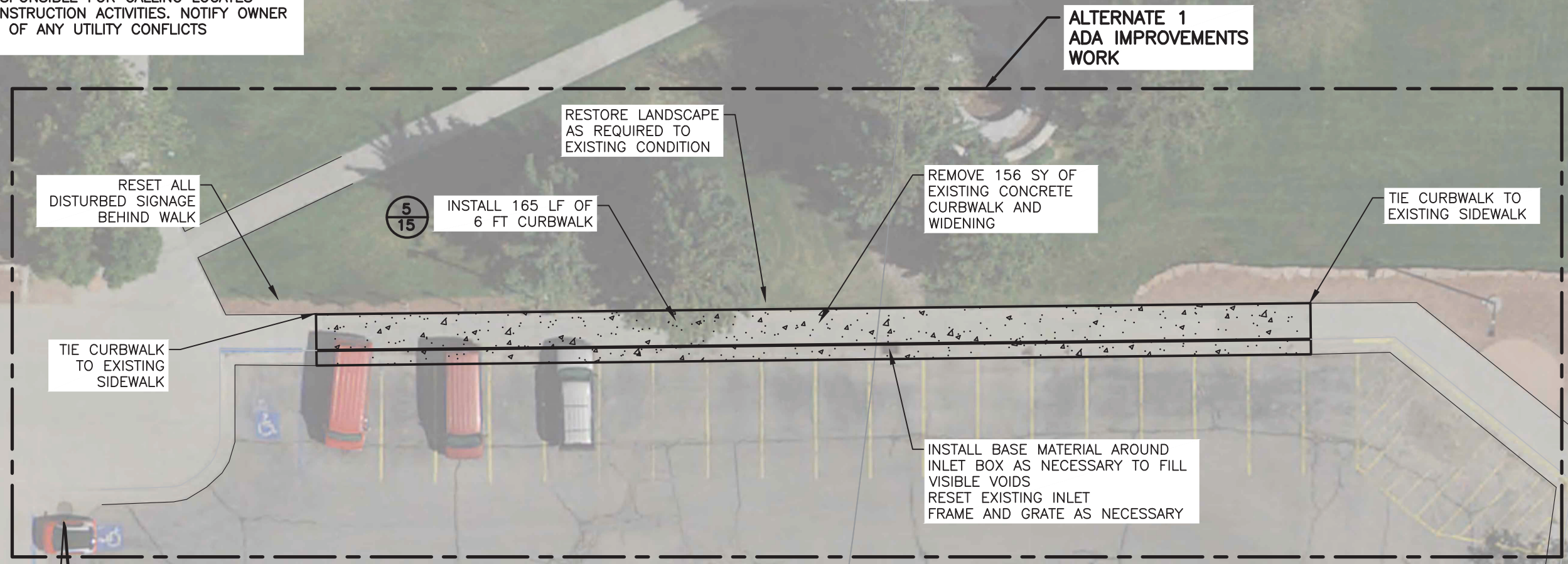
SHEET NO.
 13 OF 16
 DATE: 12/15/23

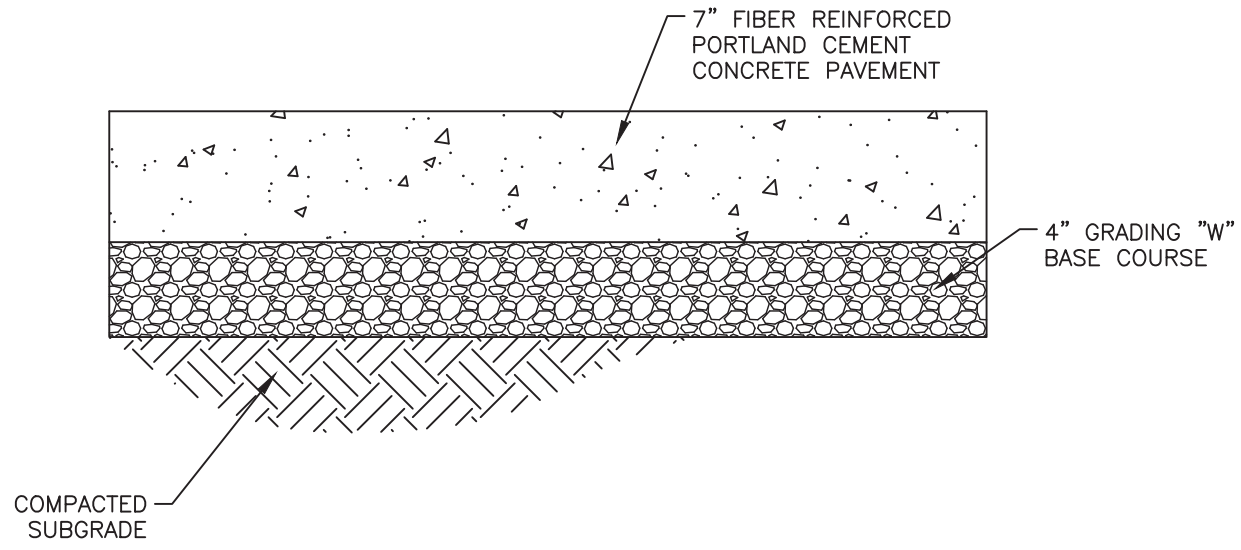
N:\CLIENT\CASPER COLLEGE\17826-CC-2024 CONCRETE REPAIRS\CIVIL\DWG\DESIGN\2024 CC MISC CONCRETE.DWG

LIESINGER HALL

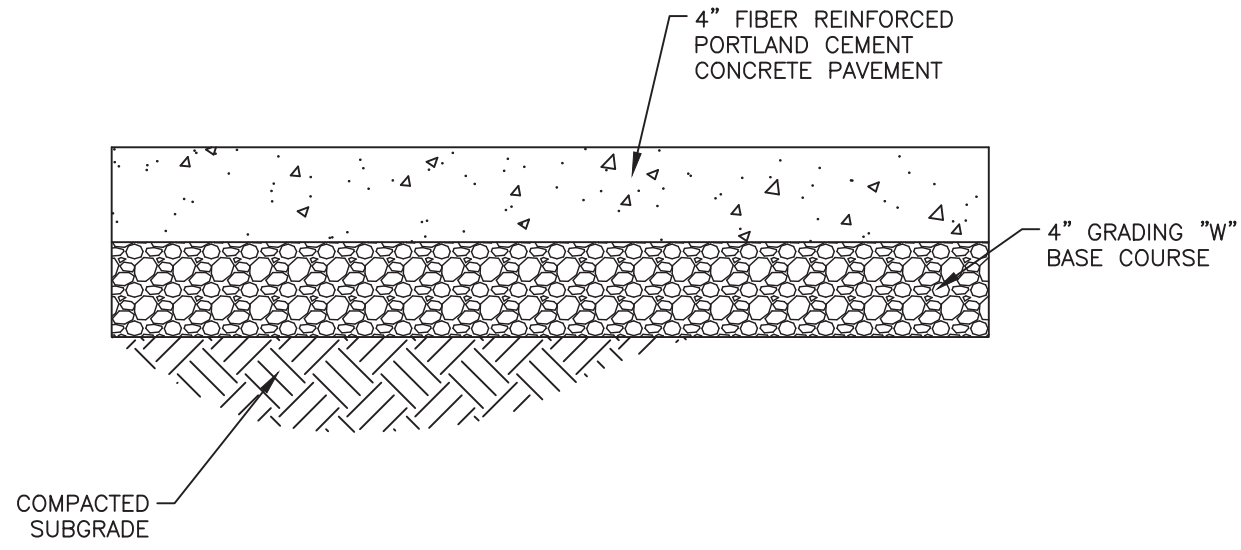


HORIZONTAL SCALE: 1"=20'

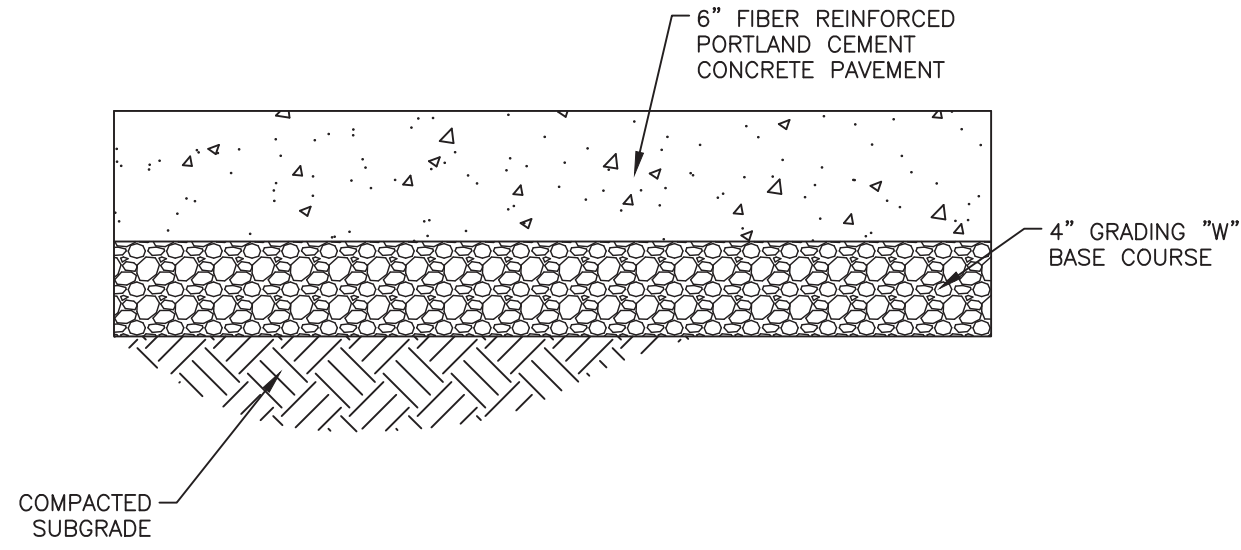




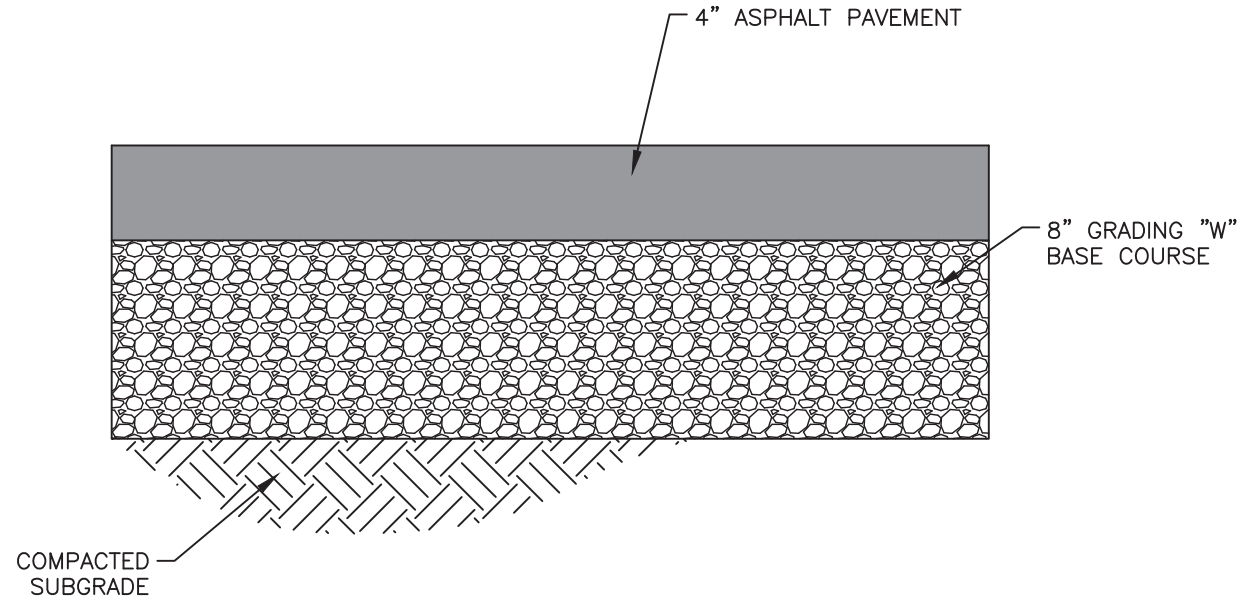
① CONCRETE PAVEMENT/VALLEY PAN
TYPICAL SECTION
NOT TO SCALE



② CONCRETE WALK TYPICAL SECTION
NOT TO SCALE



③ 6" CONCRETE WALK
TYPICAL SECTION
NOT TO SCALE



④ ASPHALT PATCH TYPICAL SECTION
NOT TO SCALE



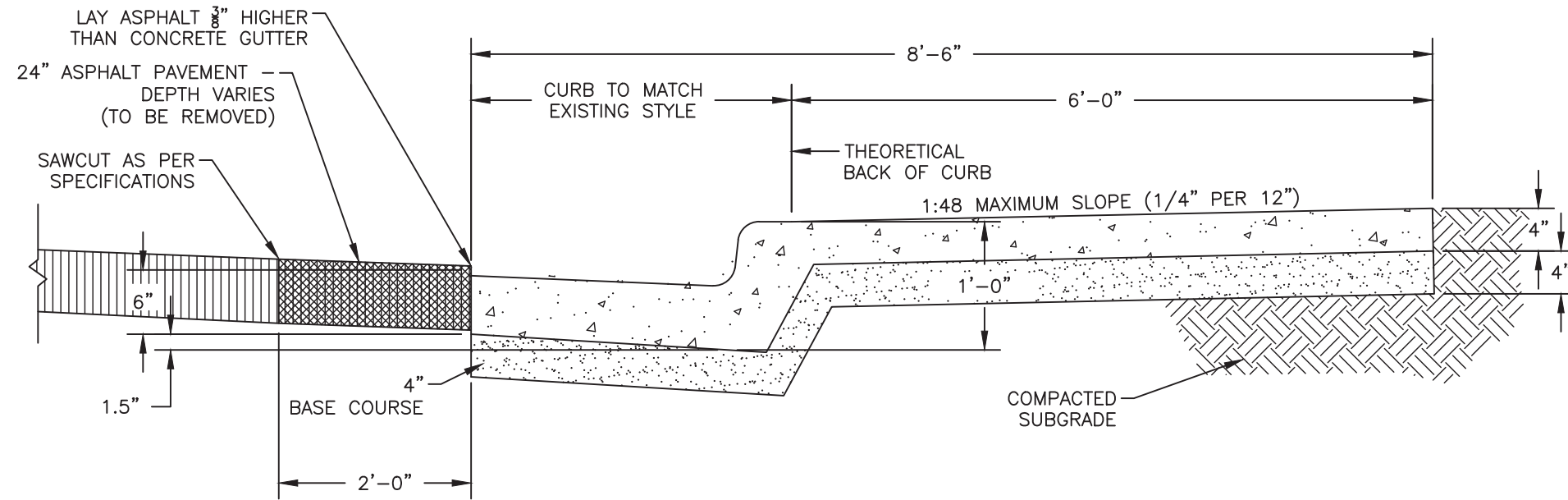
Drwg. By: FGF W.O. No.: 17826
 Chk. By: JLS Book No.:
 Acad. File: 2024 CC MISC CONCRETE.dwg
 FOR: CASPER COLLEGE FACILITY OPERATIONS

REVISIONS

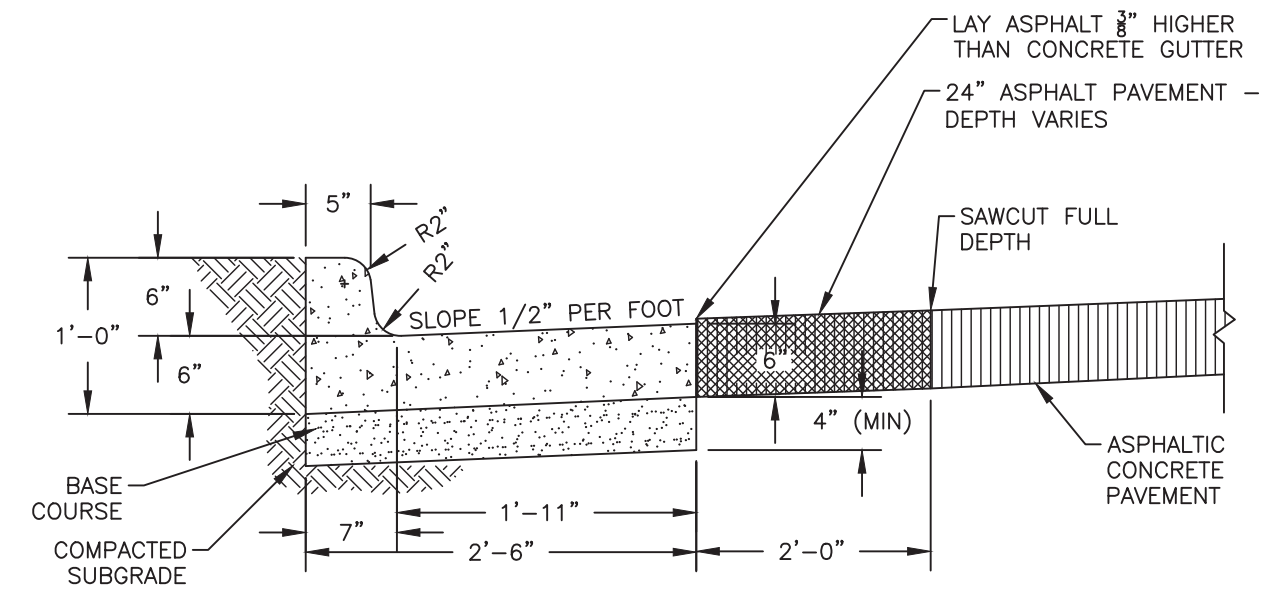
--	--

CASPER COLLEGE
 2024 ADA AND DRAINAGE CONCRETE REPAIRS
 DETAILS-1
 CASPER, WY

N:\CLIENT\CASPER COLLEGE\17826-CC-2024 CONCRETE REPAIRS\CIVIL\DWG\DESIGN\2024 CC MISC CONCRETE.DWG



5
CURBWALK
TYPICAL SECTION
 NOT TO SCALE



6
TYPE "B" C&G
TYPICAL SECTION
 NOT TO SCALE

N:\CLIENT\CASPER COLLEGE\17826-CC-2024 CONCRETE REPAIRS\CIVIL\DWG\DESIGN\2024 CC MISC CONCRETE.DWG



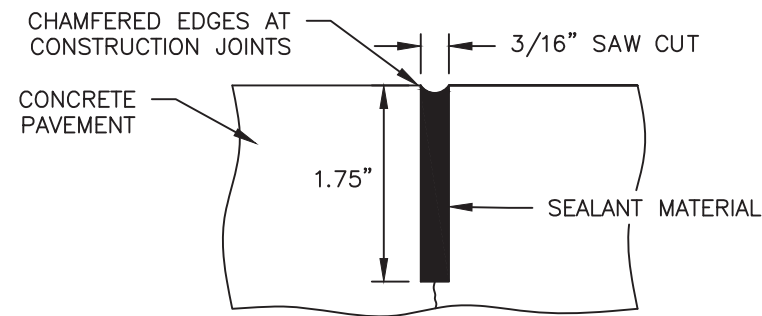
Drwg. By: FGF W.O. No.: 17826
 Chk. By: JLS Book No.:
 Acad. File: 2024 CC MISC CONCRETE.dwg
 FOR: CASPER COLLEGE
 FACILITY OPERATIONS

REVISIONS

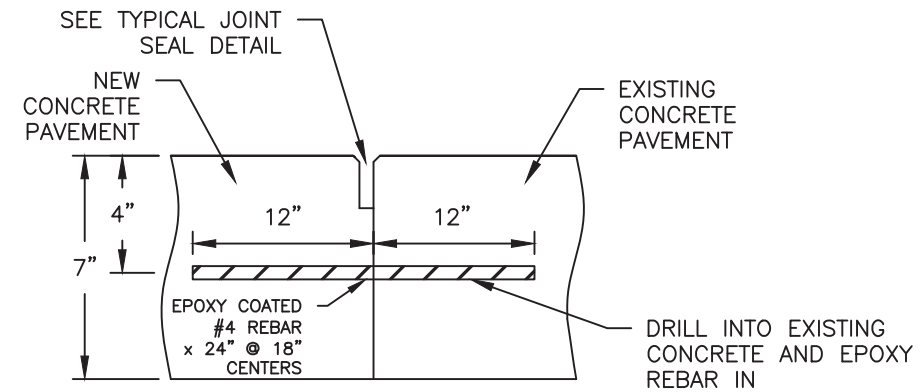
NO.	DESCRIPTION

CASPER COLLEGE
 2024 ADA AND DRAINAGE CONCRETE REPAIRS
 DETAILS-2
 CASPER, WY

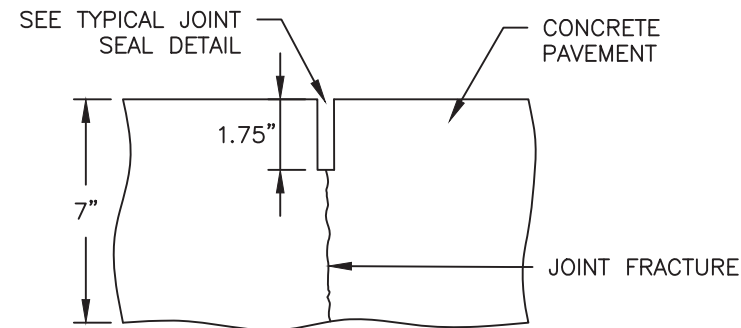
N:\CLIENT\CASPER COLLEGE\17826-CC-2024 CONCRETE REPAIRS\CIVIL\DWG\DESIGN\2024 CC MISC CONCRETE.DWG



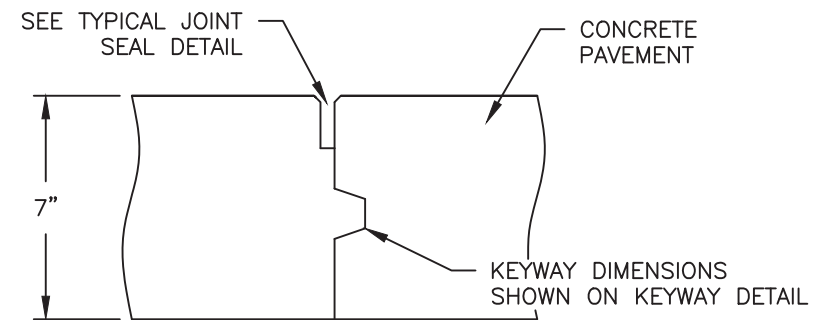
HOT Poured ELASTIC JOINT SEAL (TYPICAL)



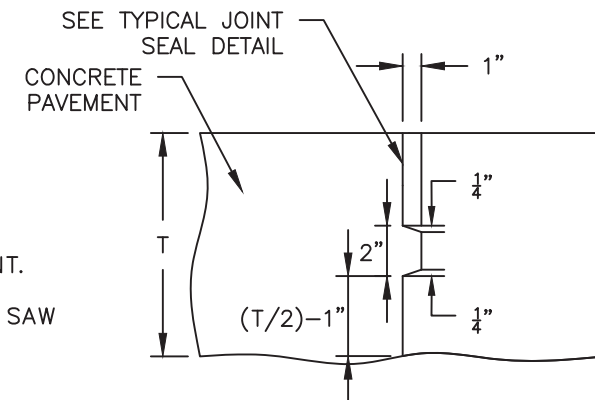
TIE TO EXISTING CONCRETE JOINT



TYPE (A) WEAKENED PLANE JOINT



TYPE (D) CONSTRUCTION JOINT



TYPICAL KEYWAY DETAIL

GENERAL NOTES

MINIMUM JOINT LENGTH IS 2 ft.

MINIMUM SLAB LENGTH IS 6 ft.

BEGIN PLACING REBAR 3 in. FROM EDGE OF PAVEMENT AND PERPENDICULAR TO THE JOINT.

WHEN TRANSVERSE JOINTS DO NOT FRACTURE IN THE JOINT AT THE EDGE OF THE SLAB, SAW DEPTH MAY BE INCREASED AS APPROVED BY THE ENGINEER.

DO NOT EXCEED 14 ft. JOINT SPACING.

**CONCRETE PAVEMENT
JOINT DETAILS**



Drwg. By: FGF W.O. No.: 17826
 Chk. By: JLS Book No.:
 Acad. File: 2024 CC MISC CONCRETE.dwg
 FOR: CASPER COLLEGE
 FACILITY OPERATIONS

REVISIONS

CASPER COLLEGE
 2024 ADA AND DRAINAGE CONCRETE REPAIRS
 DETAILS-3
 CASPER, WY