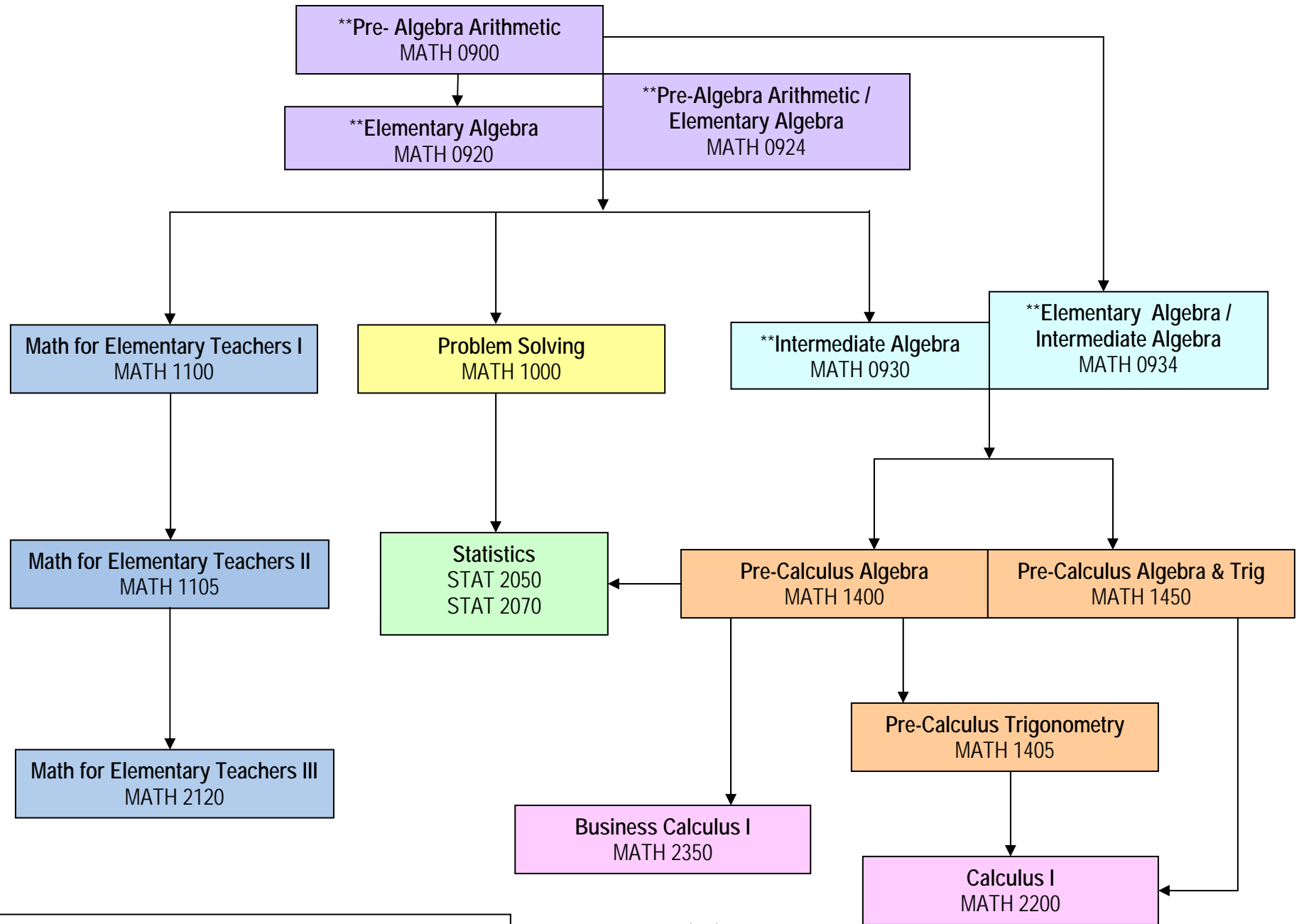


Sequence of Math Courses



**If needed as indicated by recent ACT or COMPASS score

Updated 9/28/09

CASPER COLLEGE MATHEMATICS/STATISTICS DEPARTMENTS
Initial Course Placement (Updated 04/14/2010)

REQUIRED COURSE PLACEMENT	Pre-requisite course	ACT Math	SAT	COMPASS Placement Domain	COMPASS Score
MATH 0900 (Was DVST 0900)	None	0 - 13	0 - 320	Pre-Algebra	0 - 44
MATH 0924 (Was DVST 0924)	None, but try to get only the better students who can handle the pace	10 - 13		Pre-Algebra	30 - 44
MATH 0920 (Was DVST 0920)	MATH 0900 or check scores if available	14 - 20	330 - 490	Pre-Algebra OR Algebra	45 - 100 0 - 39
MATH 0934 (Was DVST 0934)	A strong MATH 0900 or check scores if available. Try to get students who can handle the pace	17 - 20		Algebra	28 - 39
MATH 0930 or MATH 1000 (Was DVST 0930)	MATH 0920 or MATH 0924	21 - 22	500 - 530	Algebra	40 - 65
MATH 1100	MATH 0920 or MATH 0924	21 - 22	500 - 530	Algebra	40 - 65
MATH 1400	MATH 0930 or MATH 0934 ONLY, NEVER MATH 1000	23 - 25	540 - 590	Algebra OR College Algebra	66 - 100 0 - 64
MATH 1450	A strong MATH 0930 or MATH 0934, check scores and try to get students who can handle the pace	24 - 25		Algebra OR College Algebra	75-100 32 - 64
STAT 2050 or 2070	MATH 1000 or MATH 1400	23 - 25	540 - 590	Algebra OR College Algebra	66 - 100 0 - 64
MATH 1405 or 2350	MATH 1400	26	600 - 610	College Algebra OR Trigonometry	65 - 100 0 - 60
MATH 2200	MATH 1405 or MATH 1450	27	620	Trigonometry	61 - 100