

CASPER COLLEGE

COMPUTED TOMOGRAPHY

PROGRAM ADMISSION

GUIDE

2012/2013



Revised 1/12/12

Table of Contents

CT Program Information	3
Program Admission Criteria/Checklist.....	4
CT Program Academic Curriculum	5
Estimated Expenses	6
Clinical Accessibility Information	7
Core Performance Standards	8
Radiography Program Application for Admission	9

Thank you for expressing an interest in the Casper College Computed Tomography Program. Our program spans approximately ten months of both academic and clinical education, at the completion of which the student is awarded a Certificate in Computed Tomography. The program will prepare technologists to take the advanced credentialing ARRT postprimary exam in CT.

Computed Tomography (CT) Technologists are highly skilled professionals who use specialized computerized equipment to produce cross sectional images that aid radiologists in diagnosing disease and disorders. CT technologists must be knowledgeable of anatomy, physiology, patient care, communication skills, physics, equipment operation, procedure protocol, radiation protection and patient safety.

The ten month Computed Tomography Certificate Program is designed to provide advanced technical skills to registered Radiologic Technologist (radiographer or radiation therapist): Registered Nuclear Medicine Technologist (ARRT or NMTCB); or those registry eligible. The program provides the advanced competency requirements needed to take the American Registry of Radiologic Technologists (ARRT) exam in Computed Tomography (CT).

Technologists can select to apply for the entire certificate program which includes clinical education or they can take individual on-line didactic courses only. If you select taking only on-line non-clinical courses you do not need to apply to the program but must meet the educational and certification requirements listed in this guide. All courses will count toward the ARRT required Continuing Education Units (CEU) to maintain certification.

This certificate program consists of classroom-based and hybrid (web-based) didactic courses as well as clinical education for the student. The program is designed to accommodate working technologists and allows them to continue in their full time working positions while completing the course work. On campus lectures and testing will be held one weekend per month during the fall and spring semesters. The clinical component is designed to complete competency exams required to sit the ARRT CT post-primary certification exam.

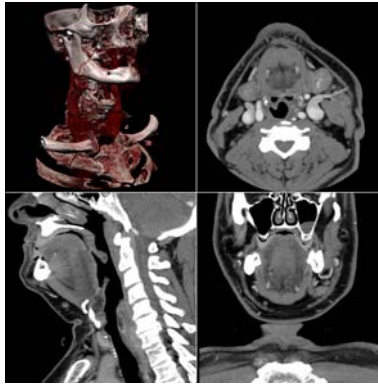
The program begins in July and continues through the following May with breaks according to the college calendar. Please review the checklist for admissions to the program enclosed in this packet for more information on the application process.

We are fortunate to have excellent clinical settings in Casper, Gillette, Sheridan, Douglas, Rawlins, and Lander for students to gain hands on experience. Students can select locations in Casper or in one of the outside communities to complete the clinical portion of their radiography education. You may also apply to complete your clinical education at another location not listed above. It is the student's responsibility to complete the required clinical objectives.

Please review the information I have enclosed in this packet. It will outline the necessary pre-requisites and application process for program eligibility. If there is anything I might do to provide you more information or to answer any questions, please feel free to call me. We also extend an invitation for you to visit our campus. If you would like a tour, call the Admissions office at 1-800-442-2963 or 1-307-268-2491, and they will be happy to make arrangements. If you have the opportunity to visit our campus, please come by and see me.

Sincerely,

Laurie Weaver Casper College Radiography Department Program Director
125 College Drive
Casper, WY 82601
307-268-2587
lweaver@caspercollege.edu



CT Program Admissions Checklist

Complete all requirements if applying for certificate program

Complete the following checklist to find out if you are ready to apply for admission to the CT Program. If you have any questions, call Laurie Weaver at 307-268-2587 or E-mail at lweaver@caspercollege.edu.

Application Requirements: Application Material due April 15th

- Apply for admission to Casper College. All transcripts from previous college coursework must be on file in the Enrollment Services Office.
- Graduate of an accredited associate degree or higher program with a 2.8 GPA or higher. Completion of appropriate courses earning a "C" or better in Patient Care, Anatomy and Physiology, Radiation Biology and Protection, Cross Sectional Anatomy, Imaging/Physics, Pharmacology and Venipuncture (or demonstrate proficiency in this area).
- Must be a registered Radiologic Technologist (radiographer or radiation therapist): Registered Nuclear Medicine Technologist (ARRT or NMTCB) or be registry eligible (must be registered prior to starting program). Turn in copy of proof of certification.
- Must hold an unrestricted Wyoming State Board of Radiology Examiners License (provide proof).
- Provide official copy of appropriate exam scores (ARRT or NMTCB).
- Can you comply with the Core Performance Standards (located in this guide), including CPR certification for the healthcare professional?
- No prior misdemeanor felony convictions – to be eligible to take the National Registry. See program director for more information.
- Send all current/previous college transcripts to Enrollment Services and Radiography program director.
- Complete and return the CT Program Application for Admission form.
- Submit a one page essay outlining your motivation for completing this program as well as future career goals and previous experience and professional involvement in the imaging profession.
- Send two recommendation letters to Laurie Weaver.
 - One from your most recent employer addressing: sense of responsibility, reliability, and capability of working with limited supervision and having interest/pride in the job
 - One from someone other than a family member who can attest to your honesty, sincerity, and the ability to work in a team setting.

Selection Process

The number of students selected for the program will depend on availability of clinical education sites. Selection is based on a point system which includes the following:

- * Academic Record:
 - Cumulative college GPA
 - Imaging course grades specifically: Patient Care, Physics/Imaging, Radiation Biology, Cross Sectional Anatomy.
- * Essay
- * Letters of recommendation

Clinical Education Site Requirements

** If you are accepted into the program you must meet the following requirements:

- Complete the Hepatitis B vaccination series: First of the series must be completed prior to the start of clinical education.
- Provide evidence of two MMR immunizations.
- Pass a drug/alcohol screening and background check prior to starting clinical education.
- Provide evidence of current health insurance and a two step PPD skin test.
- Provide evidence of Chicken Pox immunization or provide a signed statement that you have had the chicken pox.
- Provide a copy of your current driver's license.
- Provide proof of the flu shot each fall semester.
- Current BLS for Health Care Providers

Certificate of Computed Tomography Curriculum

Summer I

RDTK1915 2 Cr Introduction to Computed Tomography

Fall I

RDTK 1930 3 Cr CT Clinical Education I (216 total clinical hours)

RDTK 1920 3 Cr CT Procedures I

RDTK 1925 3 Cr CT: Physics and Instrumentation I

Spring

RDTK 2935 3 Cr CT Clinical Education II (216 Total clinical hours)

RDTK 2945 3 Cr CT Procedures II

RDTK 2941 3 Cr CT: Physics and Instrumentation II

Total Credit Hours for Certificate Program: 20 Credit Hours

Casper College Estimated Expenses

Prospective students should refer to the current Casper College catalog for tuition and fee rates.

In addition to tuition and fees, the following expenses and supplies are estimated.

• Background check/Drug screen	\$100
• Books (approximate)	\$270 (Entire Program)
• Uniforms and lab coat	\$200
• Eye protection	\$12
• Chicken pox titer	\$2.50
• Chicken pox vaccine x2 (at Public Health)	\$100 each if negative titer
• Hepatitis titer	\$30
• Hepatitis immunization series	\$90
• MMR titer	\$2.50
• MMR vaccine	\$50
• Health insurance - if not covered by another policy	\$750 annually (2009-2015)
• Flu vaccination	\$15 (approximate)
• Cap and gown fee	\$25
• Application for license	\$185
• ARRT exam fee	\$200
• Flu vaccination	\$15 (approximate)

Casper College provides, at no expense to students, liability (malpractice) insurance while CT students are engaged in their clinical lab activities. As is stated in the catalog, students are responsible for their own transportation and its related expenses.

If you are applying for financial assistance you may be eligible for an increase to your expense budget based on the above estimated expenses. Please contact the office of Student Financial Assistance for instructions on how to request an expense review.



Clinical Education Requirements

Casper College CT Program

Background Check and Drug/Alcohol Policy

Students enrolled in any of the health science programs will participate in clinical experiences in a variety of agencies. Prior to participating in the clinical experiences, students will be subject to that agency's requirements for a background check, drug testing and drug abuse prevention policies. Students are then subject to the random drug testing policy of that agency.

Following graduation, several of the state and/or national licensing or certification (registry) boards, including the American Registry of Radiologic Technologists (ARRT), may refuse to allow a graduate to sit for the required exam or issue a license or certification to a person who has a prior felony conviction or proven history of drug or alcohol abuse. Applicants to whom this applies should consult the program director for further information.

Clinical Accessibility Policy

The Casper College CT Program utilizes a variety of health care agencies in the community for clinical experience for the students. If you have been employed in one or more of the agencies and are not eligible for rehire as an employee, the agency may not permit you to participate in the essential clinical component of the program.

Please contact the Human Resources department of the affected agency and request documentation from HR that states the agency position on you participating in the clinical component of the program. If you receive a negative response from the agency, you are **automatically ineligible to apply**. A response indicating you **will be permitted** to attend clinical in the agency will be given to the program director prior to the selection process for admission to the program. If you are unable to fulfill clinical requirements due to a previous employer issue and have not complied with the above, you could be dismissed from the program.

Core Performance Standards for Students Seeking Admission to a Health Sciences Program

For admission and progression in a Casper College Health Science Program, a qualified individual is one who, with or without reasonable accommodation or modification, meets the essential eligibility requirements for participation in the program. The Health Science fields are practice disciplines with cognitive, sensory, affective, and psychomotor performance requirements. Based on these requirements, a list of “Core Performance Standards” has been developed. These standards are part of program courses, and some of the standards are more prevalent than others. These standards will be used to assist faculty, the Program Director, and the School of Health Science Dean in determining whether a student meets the essential eligibility requirements for admission and progression in the program. These standards should also be used to assist students in determining whether accommodations or modifications are necessary for the student to meet program requirements. Students who identify potential difficulties with meeting the “Core Performance Standards” must communicate their concerns to the Accommodative Services Counselor as well as the Program Director. Determination is made on an individual basis as to whether a student meets the essential eligibility requirements or whether or not the necessary accommodations or modifications can be made reasonably for participation in the Health Science program.

ISSUE	STANDARD
Critical thinking	Critical thinking ability to exercise non-clinical and clinical judgment in a timely manner
Interpersonal	Interpersonal abilities sufficient to interact professionally and therapeutically with peers, faculty, staff, administrators, patients/clients, families and groups from a variety of social, emotional, cultural, and intellectual backgrounds
Communication	Communication skills sufficient for interaction with peers, faculty, staff, administrators, patients/clients, families, and groups in verbal, nonverbal, and written form
Mobility	Physical abilities sufficient to move from room to room, safely perform treatments/procedures and assist patients/clients; lift and transfer patients/clients; manipulate equipment; walk and/or stand for extended periods of time
Motor skills	Gross and fine motor skills sufficient to provide safe and effective patient/client care
Hearing	Auditory ability sufficient to monitor and safely assess health needs
Visual	Visual ability with or without corrective lenses sufficient for observation and assessment necessary in safe patient/client care
Tactile	Tactile ability sufficient for physical assessment of patient/client
Professionalism	The ability to understand and demonstrate sufficient respect for others in non-verbal, verbal, and written communication in the classroom, laboratory, clinical settings, in the Casper College community, and in related public settings. The ability to demonstrate sufficient understanding of the cumulative effect that behavior, appearance, and communication has on the health science professional image.

Approved by attorney, J. Z. Norman

