

CONSULTANTS

CONSULTING ARCHITECT

Admundsen Associates
Ronald Shosh amundsen@aa.com
212 East Second St (307) 234-9999 phone
Casper, WY 82601 (307) 234-4542 fax

CIVIL ENGINEER

WLC
Jason Meyers, PE jasonm@wlcyo.com
200 Phronghon (307) 266-2524
Casper, WY 82601 (307) 235-5604

STRUCTURAL ENGINEER

Lower & Co., P.C.
Robert Lower, PE lowerc@lrbosp.com
1607 Cy Ave, Suite 201 (307) 234-6984
Casper, WY 82604 (307) 234-6985

MECHANICAL ENGINEER

Engineering Design Associates
Kenneth Hilton, PE khilton@edengineering.com
1607 Cy Avenue, Suite 303 (307) 266-5033
Casper, WY 82604 (307) 234-3805

ELECTRICAL ENGINEER

Engineering Design Associates
Kevin Schilling, PE kschilling@edengineering.com
1607 Cy Avenue, Suite 303 (307) 266-5033
Casper, WY 82604 (307) 234-3805

STAMP

Gateway Building
Casper College
125 College Drive
Casper, WY 82601

MARK	DATE	DESCRIPTION
	04/28/10	ADDENDUM 3
	04/21/10	ADDENDUM 2
	04/14/10	ADDENDUM 1
CD	04/06/10	100% C.D.
CD	03/15/10	90% C.D.
CD	02/16/10	50% C.D.
DD	01/11/10	100% D.D.

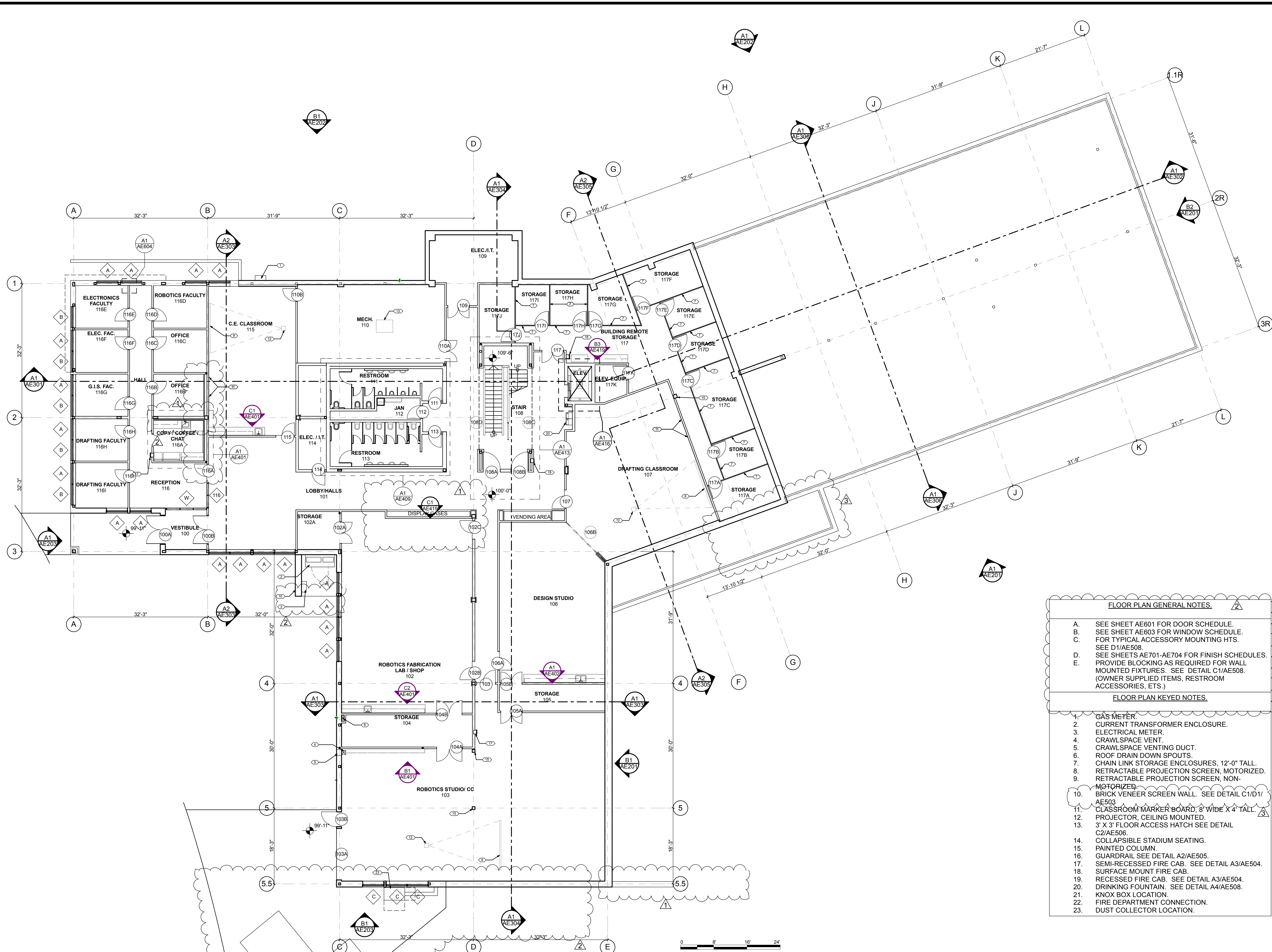
PROJECT NO: 09-030
MODEL FILE: CCGB B09-030
DRAWN BY: jt, jc
CHK'D BY: ah, kw
COPYRIGHT

SHEET TITLE

CONFORMED CONSTRUCTION
DOCUMENTS 05.17.2010

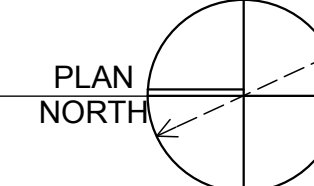
Level 1 Floor
Plan

AE101



- FLOOR PLAN GENERAL NOTES.**
- SEE SHEET AE601 FOR DOOR SCHEDULE.
 - SEE SHEET AE603 FOR WINDOW SCHEDULE.
 - FOR TYPICAL ACCESSORY MOUNTING HTS. SEE D1/AE508.
 - SEE SHEETS AE701-AE704 FOR FINISH SCHEDULES. PROVIDE BLOCKING AS REQUIRED FOR WALL MOUNTED FIXTURES. SEE DETAIL C1/AE508. (OWNER SUPPLIED ITEMS, RESTROOM ACCESSORIES, ETS.)
- FLOOR PLAN KEYED NOTES.**
- GAS METER.
 - CURRENT TRANSFORMER ENCLOSURE.
 - ELECTRICAL METER.
 - CRAWLSPACE VENT.
 - CRAWLSPACE VENTING DUCT.
 - ROOF DRAIN DOWN SPOUTS.
 - CHAIN LINK STORAGE ENCLOSURES, 12'-0" TALL.
 - RETRACTABLE PROJECTION SCREEN, MOTORIZED.
 - RETRACTABLE PROJECTION SCREEN, NON-MOTORIZED.
 - BRICK VENEER SCREEN WALL. SEE DETAIL C1/D1/AE503.
 - CLASSROOM MARKER BOARD, 8' WIDE X 4' TALL.
 - PROJECTOR, CEILING MOUNTED.
 - 3' X 3' FLOOR ACCESS HATCH SEE DETAIL C2/AE506.
 - COLLAPSIBLE STADIUM SEATING.
 - PAINTED COLUMN.
 - GUARDRAIL SEE DETAIL A2/AE505.
 - SEMI-RECESSED FIRE CAB. SEE DETAIL A3/AE504.
 - SURFACE MOUNT FIRE CAB.
 - RECESSED FIRE CAB. SEE DETAIL A3/AE504.
 - DRINKING FOUNTAIN. SEE DETAIL A4/AE508.
 - KNOX BOX LOCATION.
 - FIRE DEPARTMENT CONNECTION.
 - DUST COLLECTOR LOCATION.

A1 LEVEL 1 PLAN
SCALE: 3/32" = 1'-0"



teamwork://server3/CCGB B09-030 Updated 5/11/2010

CONSULTANTS

CONSULTING ARCHITECT

Admundsen Associates
Ronald Shosh amundssoc@aol.com
212 East Second St (307) 234-9999 phone
Casper, WY 82601 (307) 234-4542 fax

CIVIL ENGINEER

WLC
Jason Meyers, PE jasonm@wlcwy.com
200 Phronhorn (307) 266-2524
Casper, WY 82601 (307) 234-5604

STRUCTURAL ENGINEER

Lower & Co., P.C.
Robert Lower, PE lowerrc@lrbosp.com
1607 Cy Ave, Suite 201 (307) 234-6984
Casper, WY 82604 (307) 234-6985

MECHANICAL ENGINEER

Engineering Design Associates
Kenneth Hilton, PE khilton@edengineering.com
1607 Cy Avenue, Suite 303 (307) 266-5033
Casper, WY 82604 (307) 234-3805

ELECTRICAL ENGINEER

Engineering Design Associates
Kevin Schilling, PE kschilling@edengineering.com
1607 Cy Avenue, Suite 303 (307) 266-5033
Casper, WY 82604 (307) 234-3805

STAMP

Gateway Building
Casper College
125 College Drive
Casper, WY 82601

MARK	DATE	DESCRIPTION
	04/28/10	ADDENDUM 3
	04/21/10	ADDENDUM 2
	04/14/10	ADDENDUM 1
CD	04/06/10	100% C.D.
CD	03/15/10	90% C.D.
CD	02/16/10	50% C.D.
DD	01/11/10	100% D.D.

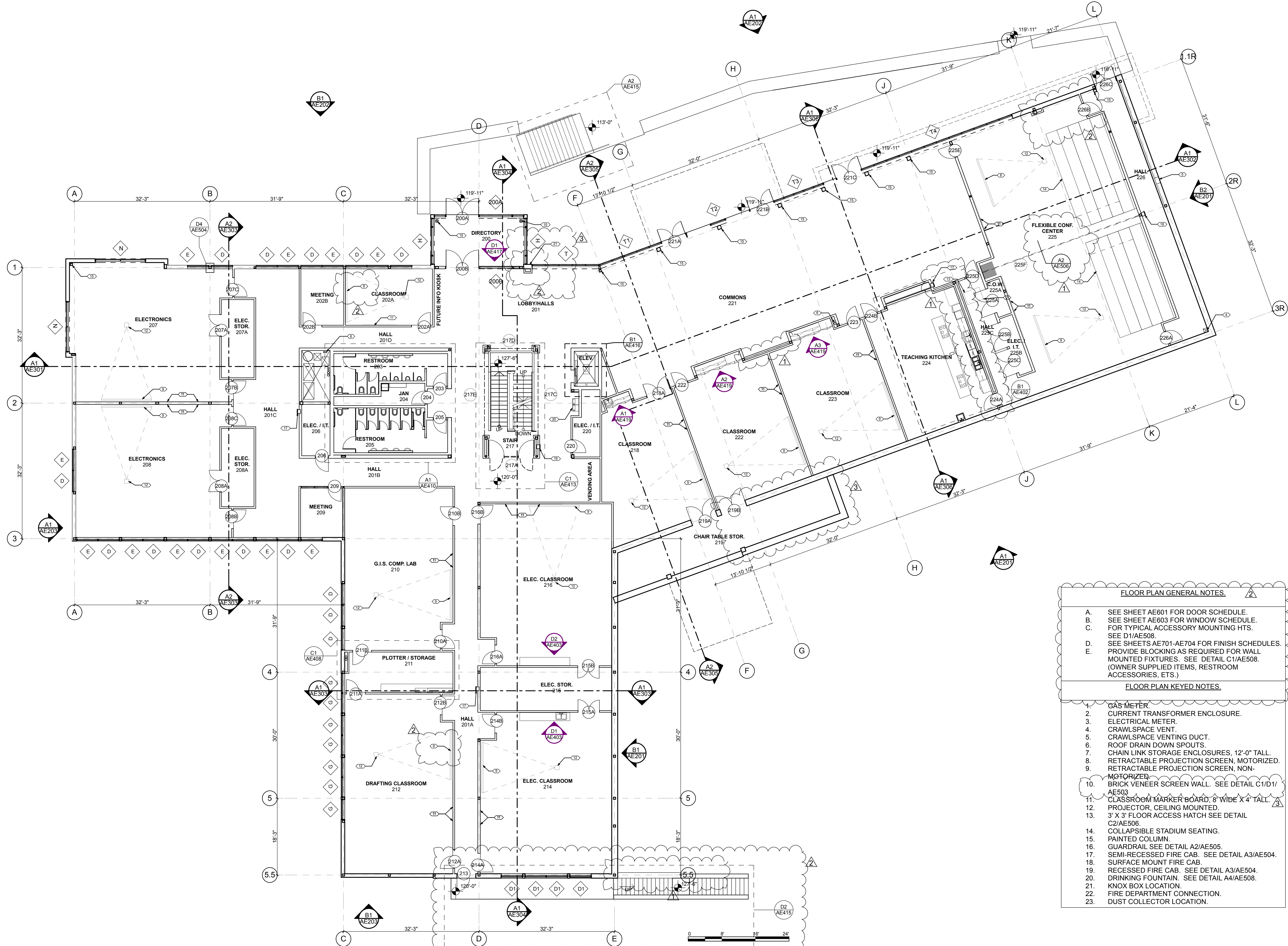
PROJECT NO: 09-030
MODEL FILE: CCGB B09-030
DRAWN BY: jt, jc
CHK'D BY: ah, kw
COPYRIGHT

SHEET TITLE

CONFORMED CONSTRUCTION
DOCUMENTS 05.17.2010

Level 2 Floor
Plan

AE102



- FLOOR PLAN GENERAL NOTES.**
- SEE SHEET AE601 FOR DOOR SCHEDULE.
 - SEE SHEET AE603 FOR WINDOW SCHEDULE.
 - FOR TYPICAL ACCESSORY MOUNTING HTS. SEE D1/AE508.
 - SEE SHEETS AE701-AE704 FOR FINISH SCHEDULES. PROVIDE BLOCKING AS REQUIRED FOR WALL MOUNTED FIXTURES. SEE DETAIL C1/AE508. (OWNER SUPPLIED ITEMS, RESTROOM ACCESSORIES, ETS.)
- FLOOR PLAN KEYED NOTES.**
- GAS METER.
 - CURRENT TRANSFORMER ENCLOSURE.
 - ELECTRICAL METER.
 - CRAWLSPACE VENT.
 - CRAWLSPACE VENTING DUCT.
 - ROOF DRAIN DOWN SPOUTS.
 - CHAIN LINK STORAGE ENCLOSURES, 12'-0" TALL.
 - RETRACTABLE PROJECTION SCREEN, MOTORIZED.
 - RETRACTABLE PROJECTION SCREEN, NON-MOTORIZED.
 - BRICK VENEER SCREEN WALL. SEE DETAIL C1/D1/AE503.
 - CLASSROOM MARKER BOARD, 8' WIDE X 4' TALL.
 - PROJECTOR, CEILING MOUNTED.
 - 3' X 3' FLOOR ACCESS HATCH SEE DETAIL C2/AE506.
 - COLLAPSIBLE STADIUM SEATING.
 - PAINTED COLUMN.
 - GUARDRAIL SEE DETAIL A2/AE505.
 - SEMI-RECESSED FIRE CAB. SEE DETAIL A3/AE504.
 - SURFACE MOUNT FIRE CAB.
 - RECESSED FIRE CAB. SEE DETAIL A3/AE504.
 - DRINKING FOUNTAIN. SEE DETAIL A4/AE508.
 - KNOX BOX LOCATION.
 - FIRE DEPARTMENT CONNECTION.
 - DUST COLLECTOR LOCATION.

A1 LEVEL 2 PLAN
SCALE: 3/32" = 1'-0"



CONSULTANTS

CONSULTING ARCHITECT
Admundsen Associates
Ronald Shosh
212 East Second St
Casper, WY 82601
(307) 234-9999 phone
(307) 234-4542 fax
arundssoc@aol.com

CIVIL ENGINEER
WLC
Jason Meyers, PE
200 Phronghon
Casper, WY 82601
(307) 235-5604
jasonm@wlsyo.com

STRUCTURAL ENGINEER
Lower & Co., P.C.
Robert Lower, PE
1607 Cy Ave, Suite 201
Casper, WY 82604
(307) 234-6984
lowerc@rbcsp.com

MECHANICAL ENGINEER
Engineering Design Associates
Kenneth Hilton, PE
1607 Cy Avenue, Suite 303
Casper, WY 82604
(307) 266-5033
knhilton@edasingeering.com

ELECTRICAL ENGINEER
Engineering Design Associates
Kevin Schilling, PE
1607 Cy Avenue, Suite 303
Casper, WY 82604
(307) 266-5033
kschilling@edasingeering.com

STAMP

**Gateway Building
Casper College**
125 College Drive
Casper, WY 82601

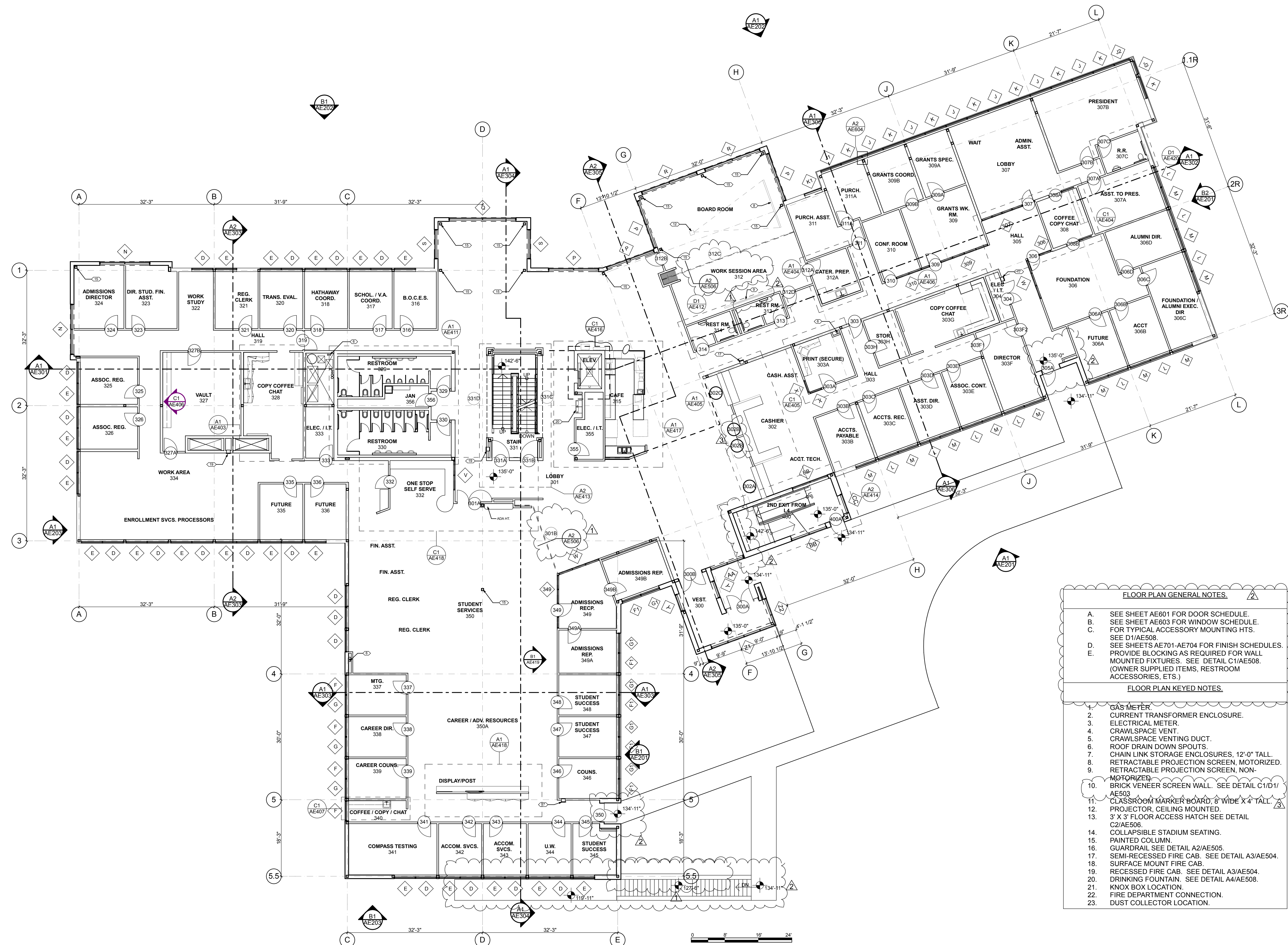
MARK	DATE	DESCRIPTION
	04/28/10	ADDENDUM 3
	04/21/10	ADDENDUM 2
	04/14/10	ADDENDUM 1
CD	04/06/10	100% C.D.
CD	03/15/10	90% C.D.
CD	02/16/10	50% C.D.
DD	01/11/10	100% D.D.

PROJECT NO: 09-030
MODEL FILE: CCGB B09-030
DRAWN BY: jt, jc
CHK'D BY: ah, kw
COPYRIGHT

SHEET TITLE
**CONFORMED CONSTRUCTION
DOCUMENTS 05.17.2010**

**Level 3 Floor
Plan**

AE103



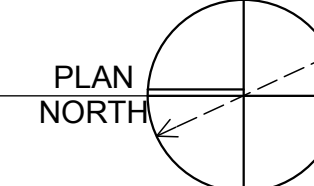
FLOOR PLAN GENERAL NOTES

- A. SEE SHEET AE601 FOR DOOR SCHEDULE.
- B. SEE SHEET AE603 FOR WINDOW SCHEDULE.
- C. FOR TYPICAL ACCESSORY MOUNTING HTS. SEE D1/AE508.
- D. SEE SHEETS AE701-AE704 FOR FINISH SCHEDULES.
- E. PROVIDE BLOCKING AS REQUIRED FOR WALL MOUNTED FIXTURES. SEE DETAIL C1/AE508. (OWNER SUPPLIED ITEMS, RESTROOM ACCESSORIES, ETS.)

FLOOR PLAN KEYED NOTES

- 1. GAS METER.
- 2. CURRENT TRANSFORMER ENCLOSURE.
- 3. ELECTRICAL METER.
- 4. CRAWLSPACE VENT.
- 5. CRAWLSPACE VENTING DUCT.
- 6. ROOF DRAIN DOWN SPOUTS.
- 7. CHAIN LINK STORAGE ENCLOSURES, 12'-0" TALL.
- 8. RETRACTABLE PROJECTION SCREEN, MOTORIZED.
- 9. RETRACTABLE PROJECTION SCREEN, NON-MOTORIZED.
- 10. BRICK VENEER SCREEN WALL. SEE DETAIL C1/D1/AE503.
- 11. CLASSROOM MARKER BOARD, 8' WIDE X 4' TALL.
- 12. PROJECTOR, CEILING MOUNTED.
- 13. 3' X 3' FLOOR ACCESS HATCH SEE DETAIL C2/AE506.
- 14. COLLAPSIBLE STADIUM SEATING.
- 15. PAINTED COLUMN.
- 16. GUARDRAIL SEE DETAIL A2/AE505.
- 17. SEMI-RECESSED FIRE CAB. SEE DETAIL A3/AE504.
- 18. SURFACE MOUNT FIRE CAB.
- 19. RECESSED FIRE CAB. SEE DETAIL A3/AE504.
- 20. DRINKING FOUNTAIN. SEE DETAIL A4/AE508.
- 21. KNOX BOX LOCATION.
- 22. FIRE DEPARTMENT CONNECTION.
- 23. DUST COLLECTOR LOCATION.

A1 LEVEL 3 PLAN
SCALE: 3/32" = 1'-0"



teamwork://server3/CCGB B09-030 Updated 5/11/2010

CONSULTANTS

CONSULTING ARCHITECT

Admundsen Associates
Ronald Shosh amundsen@ad.com
212 East Second St (307) 234-9999 phone
Casper, WY 82601 (307) 234-4542 fax

CIVIL ENGINEER

WLC
Jason Meyers, PE jmeyers@wlc.com
200 Pronghorn (307) 266-2524
Casper, WY 82601 (307) 235-5604

STRUCTURAL ENGINEER

Lower & Co., P.C.
Robert Lower, PE rlower@lrbosp.com
1607 Cy Ave, Suite 201 (307) 234-6984
Casper, WY 82604 (307) 234-6985

MECHANICAL ENGINEER

Engineering Design Associates
Kenneth Hilton, PE khilton@edengineering.com
1607 Cy Avenue, Suite 303 (307) 266-5033
Casper, WY 82604 (307) 234-3805

ELECTRICAL ENGINEER

Engineering Design Associates
Kevin Schilling, PE kschilling@edengineering.com
1607 Cy Avenue, Suite 303 (307) 266-5033
Casper, WY 82604 (307) 234-3805

STAMP

**Gateway Building
Casper College**

125 College Drive
Casper, WY 82601

MARK	DATE	DESCRIPTION
	04/28/10	ADDENDUM 3
	04/21/10	ADDENDUM 2
CD	04/06/10	100% C.D.
CD	03/15/10	90% C.D.
CD	02/16/10	50% C.D.
DD	01/11/10	100% D.D.

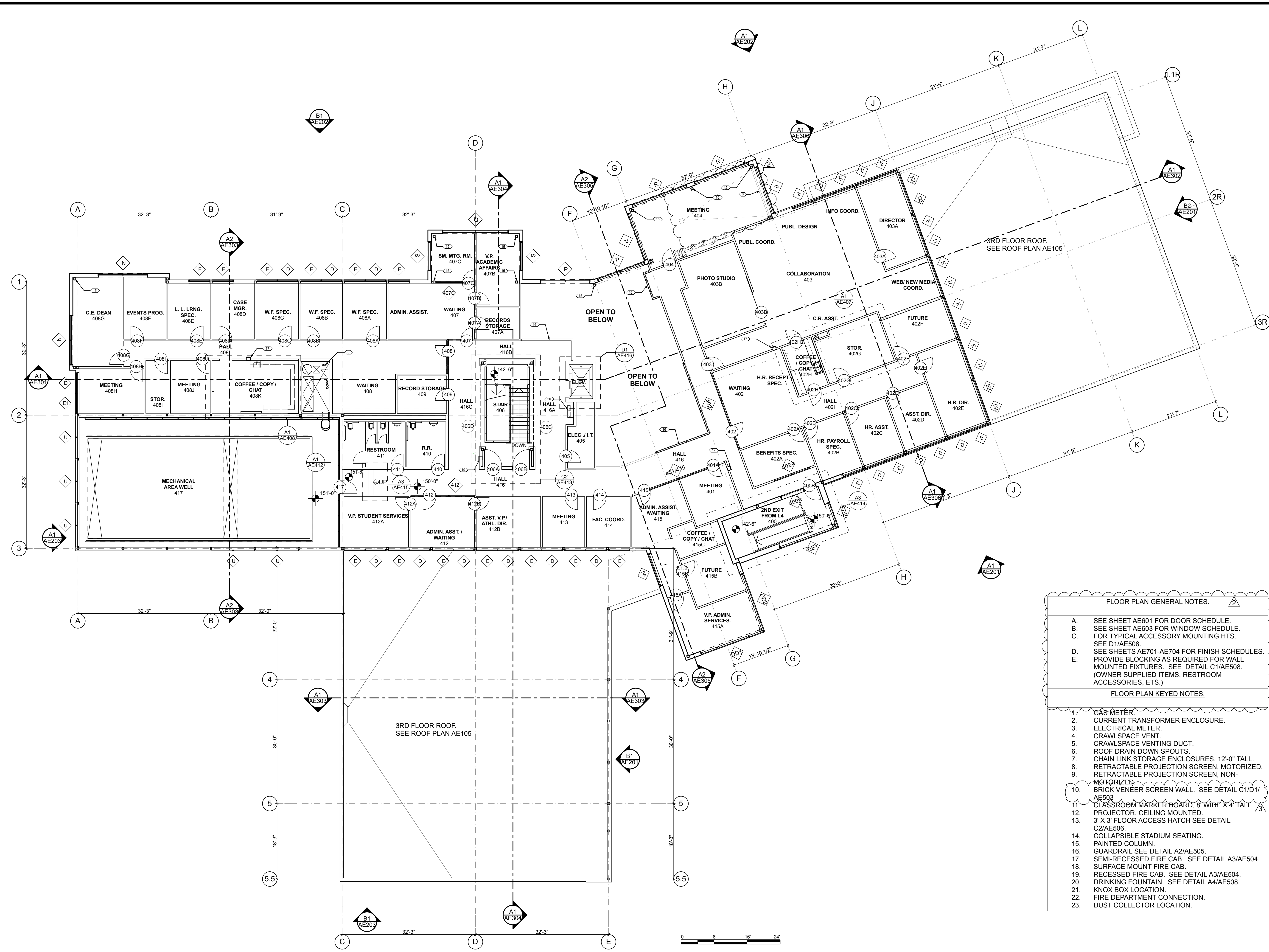
PROJECT NO: 09-030
MODEL FILE: CCGB B09-030
DRAWN BY: jt, jc
CHK'D BY: ah, kw
COPYRIGHT

SHEET TITLE

**CONFORMED CONSTRUCTION
DOCUMENTS 05.17.2010**

Level 4 Floor
Plan

AE104



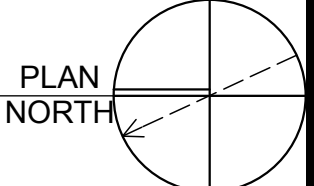
FLOOR PLAN GENERAL NOTES

- A. SEE SHEET AE601 FOR DOOR SCHEDULE.
- B. SEE SHEET AE603 FOR WINDOW SCHEDULE.
- C. FOR TYPICAL ACCESSORY MOUNTING HTS. SEE D1/AE508.
- D. SEE SHEETS AE701-AE704 FOR FINISH SCHEDULES.
- E. PROVIDE BLOCKING AS REQUIRED FOR WALL MOUNTED FIXTURES. SEE DETAIL C1/AE508. (OWNER SUPPLIED ITEMS, RESTROOM ACCESSORIES, ETS.)

FLOOR PLAN KEYED NOTES

- 1. GAS METER.
- 2. CURRENT TRANSFORMER ENCLOSURE.
- 3. ELECTRICAL METER.
- 4. CRAWLSPACE VENT.
- 5. CRAWLSPACE VENTING DUCT.
- 6. ROOF DRAIN DOWN SPOUTS.
- 7. CHAIN LINK STORAGE ENCLOSURES, 12'-0" TALL.
- 8. RETRACTABLE PROJECTION SCREEN, MOTORIZED.
- 9. RETRACTABLE PROJECTION SCREEN, NON-MOTORIZED.
- 10. BRICK VENEER SCREEN WALL. SEE DETAIL C1/D1/AE503.
- 11. CLASSROOM MARKER BOARD, 8' WIDE X 4' TALL.
- 12. PROJECTOR, CEILING MOUNTED.
- 13. 3' X 3' FLOOR ACCESS HATCH SEE DETAIL C2/AE506.
- 14. COLLAPSIBLE STADIUM SEATING.
- 15. PAINTED COLUMN.
- 16. GUARDRAIL SEE DETAIL A2/AE505.
- 17. SEMI-RECESSED FIRE CAB. SEE DETAIL A3/AE504.
- 18. SURFACE MOUNT FIRE CAB.
- 19. RECESSED FIRE CAB. SEE DETAIL A3/AE504.
- 20. DRINKING FOUNTAIN. SEE DETAIL A4/AE508.
- 21. FIRE DEPARTMENT CONNECTION.
- 22. DUST COLLECTOR LOCATION.

A1 LEVEL 4 PLAN
SCALE: 3/32" = 1'-0"



teamwork://server3/CCGB B09-030 Updated 5/11/2010